



ISSN 0868-5169

Р 3(91) 2016 ЕГИОН

ЭКОНОМИКА И СОЦИОЛОГИЯ

« : » 2016 . 3 (91). 284 .

1963 .
« , »,
1993 . -
- « : ».
.

:

()

: ,

,

« »

:

. . (), . . , . . ,
. . (), . . (-
,), . . (), . . ,
. . (), . . , . . , . . -
, . . , . . , . . (-
,), . . , . . , . . , . -
(), . . , . . , . . ,
. . , . . (), . . , . . (),
. .

: 630090, . ,
, 17,
E-mail: region@ieie.nsc.ru, yes@ieie.nsc.ru

XXI

| | |
|-----|-----|
| “ ” | 3 |
| “ ” | 28 |
| “ ” | 55 |
| “ ” | 76 |
| “ ” | 98 |
| “ ” | 118 |
| “ ” | 133 |
| “ ” | 143 |
| “ ” | 162 |
| “ ” | 178 |
| “ ” | 195 |
| “ ” | 219 |
| “ ” | 238 |
| “ ” | 250 |
| “ ” | 269 |
| “ ” | 282 |
| “ ” | 283 |

**Russian North and Arctic in the Context
of Global Challenges of the XXI century**

- Leksin, V.N. and B.N. Porfiriev.* Organizing Statistical Research and System Monitoring
of the Development of Macoregions 3

Economic Issues of Regional Development

- Kuleshov, V.V., G.A. Untura and V.D. Markova.* Developing the Knowledge Economy:
the Role of Innovation Projects in the Regional Reindustrialization Program 28
- Malkina, M.Yu.* The Relationship of Normal and Excessive Personal Income Inequality
with Regional Economies Performance Indicators 55

Social Issues of Regional Development

- Soboleva, S.V., N.E. Smirnova and O.V. Chudaeva.* The Dynamics of Demographic Risks
in Siberia: a Multiregional Analysis 76
- Sukneva, S.A. and A.S. Barashkova.* Family and Children in the System of Life Values
of the Yakut Population 98
- Popov, Ye.V., I.S. Kats, A.Yu. Veretennikova and Ye.A. Sevastyanova.* Evaluating
the Quality of Local Public Goods 118
- Pakhomov, A.A. and T.S. Mostakhova.* The Ethnic and Social Problems
of Yakut Territories in the Power of Siberia Pipeline Construction Area 133

**Regional and Interregional Aspects
of Structural and Investment Policy**

- Plyaskina, N.I., V.N. Kharitonova and I.A. Vizhina.* Regional Assistance in Creating
Gas-Chemical Clusters in Amur and Inkhutsk Oblasts 143
- Shibikin, D.D.* Large-Scale Investment Projects: the Problem of Choice Under Uncertainty ... 162

**Practices of Executive and Legislative Authorities
in Russian Regions**

- Larionova, N.A.* Methodology for Assessing the Interregional Cooperation
of a Russian Federal Subject 178

Environmental and Economic Issues of Regional Development

- Glazyrina, I.P. and S.M. Lavlinskii.* Eco-Economic Models in the Mineral Resource
Sector of Russia 195

Issues of Local Self-Government and Municipal Development

- Sumskaya, T.V.* Problems of Budget Sufficiency of Novosibirsk Megalopolis 219

**Foreign Experience of Regional Science,
Regional Policy and Spatial Development**

- Iqbal, B.A.* The BRICS Economic Bloc: Risks and Initiatives 238
- Kaluzhina, Z.I.* Human Development in the BRICS Countries: Similarities and Differences ... 250

News Notes

- Klistorin, V.I.* Models of Spatial Analysis and Forecasting 269
- The 40th Anniversary of the Economic Research Institute, Far Eastern Branch
of the Russian Academy of Sciences 282
- In Memory of Academician A.I. Tatarkin 283

338.23

: , 2016, 3 (91), . 3–27

• • , • •

« »

.

,

-

,

,

-

-

-

.

-

.

:

,

,

,

,

-

-

2020 .

.

-

-

)

(

,

,

,

,

-

,

$[6]^1.$

« » -
· -
(-
) , « -
» · -
· -
, -
, -
· · -
- -
: , , -
· -
2000- , -
« » , « -
», -
, -
, · -
, -
« » , « -
, -
, -
, -
, -
», -
, -
« -
», -
· -
« » , -
- :

,

.

-

-

,

,

,

-

,

-

.

-

—

,

-

.

,

«

»

«

»,

-

.

-

,

-

,

.

,

-

,

-

,

,

-

.

,

-

,

,

,

.

-

-

5 . 29 2007 . 282- «

» (251- 23 2013 .),

10 2003 . 677 «

-

-

».

6 2015 . 16 2014 .

704.

7 2015 . 16 2014 . 704 -

26 2014 . 724 26 2015 . 17.

8 « ,

»

-

-

-

,

,

,

•

—

•

<<

—

,

>>

(

.)

,

,

<<

—

—

—

•

•

(

,

».

.9

—

—

| | | |
|--|------|---|
| | 9. | - |
| | . | - |
| | , | - |
| | , | - |
| | , | - |
| | 14 | - |
| | . | - |
| | , | - |
| | , | - |
| | , | - |
| | , | - |
| | , | - |
| | , | - |
| | , | - |
| | . | - |
| | , | - |
| | - | - |
| | . | - |
| | 172- | - |
| | « | - |
| | ». | - |
| | , | - |
| | , | - |
| | 12 | - |
| | « | - |
| | , | - |
| | - | - |
| | , | - |
| | , | - |
| | - | - |
| | 9 | - |
| | , | - |
| | . 18 | - |
| | « | - |
| | ». | - |

14

(<http://base.garant.ru/70188802/#friends#ixzz40LUprMTA>).

13.

14.

15.

16.

17.

».

,

(),

()

,

,

,

()

,

»¹⁶ .63 «

« ()

...

».

1)

,

;

2) (

16 . 21 2014 . 219- « 10 29

2002 . 7- , «

2015 .) «

»

1 2016 .).

17 12 2014 . 27- .

», -
.
-
-
-
», -
-
(
-
19), OSPAR²⁰ (-
-
-
-
(
-
,
-
-
) , IOGP –
(
-
», -
« »
-
) .
-
,
-
2014–2015 .
-
«Deloitte» –
-
19 ,
-
2011 .
« », -
-
»,
-
20 «OS» – «PAR» – .

«Pricewaterhouse Coopers», «Ernst and Young» KPMG «
»²¹.

1.

(,)

²¹ .: . -
2015 . – URL: http://www2.deloitte.com/content/dam/Deloitte/ru/Documents/Operation/russian/ru_deloitte_environmental_monitoring.pdf;
2014 . – URL:
https://www2.deloitte.com/content/dam/Deloitte/ru/Documents/Operation/russian/ru_mejdynarodnaya-praktika-ecologicheskogo-monitoringa-shelf-arktiki.pdf .

(14-38-00009)

1. , 2015. – 264 .
2. , 1995. – 85 .
3.
4. // . – 2015. – 1. – . 6–9.
5. , 2000. – . 70–83.
6. // . – 2015. – 5. – . 54–77.
7. // . – 2015. – 16 (250). – . 58–68.
8. // . – 2012. – . 17. – . 256–269.

(,) –
 , « » (117312,
 . 60- , 9, e-mail: leksinvn@yandex.ru).
(,) –
 , (117418, ,
 47, e-mail: b_porfiriev@mail.ru).

V.N. Leksin, B.N. Porfiriev

ORGANIZING STATISTICAL RESEARCH AND SYSTEM MONITORING OF THE DEVELOPMENT OF MACROREGIONS

Due to a certain practice to target territories incorporating one or several subjects of the Russian Federation as objects of state regulation, this article clarifies the definition of a «macroregion» and uses specific examples to show particular characteristics of a macroregion as an entity of statistical observation and monitoring. We analyze statutory enactments which govern the organization of public statistical systems and monitoring investigations. Through the example of the Arctic zone of the Russian Federation, we demonstrate the objectives and validate our recommendations on how to organize statistical surveillance and system monitoring of the current condition and development of macroregions.

Keywords: Arctic zone of the Russian Federation; macroregion; monitoring; statistical surveillance; strategic planning

The publication is prepared within the framework of the project No. 14-38-00009 supported by funding from the Russian Science Foundation

References

1. *Ishaev, V.I., V.V. Ivanter & D.B. Kuvalin.* (2015). *Ekonomika Dalnego Vostoka i Baykalskogo regiona* [Economy of the Far East and Baikal Region]. Moscow, MAKS Press Publ., 264.
2. *Kogut, A.Ye. & V.S. Rokhchin.* (1995). *Informatsionnye osnovy regionalnogo sotsialno-ekonomicheskogo monitoringa* [The Information Base of the Regional Socio-Economic Monitoring]. St. Petersburg, ISESP RAS Publ., 85.
3. *Kurkov, I.I.* (2015). *Territorii operezhayushchego sotsialno-ekonomicheskogo razvitiya kak odin iz putey povysheniya konkurentosposobnosti regionalnykh ekonomik Rossii* [Territories of advanced socio-economic development as one of ways of increase of competitiveness of Russia's regional economies]. *Voprosy ekonomiki i upravleniya* [Issues of Economics and Management], 1, 6–9.

4. *Leksin, V.N., V.Ye. Seliverstov* (Ed.), *A.N. Shvetsov & D. Yuill* (Ed.). (2000). O formirovanii gosudarstvennoy sistemy monitoringa sotsialno-ekonomicheskoy, natsionalno-etnicheskoy i politicheskoy situatsii v regionakh Rossiyskoy Federatsii [On establishing a national system of socio-economic, national-ethnic and political monitoring in Russian regions]. Proekt TESIS «Regionalnaya politika, napravlyennaya na sokrashchenie sotsialno-ekonomicheskoy i pravovoy asimmetrii» [TACIS Project «Regional Policy Addressing Economic, Social and Legal Asymmetries»]. Moscow, Novosibirsk, EKOR Publ., Siberian Accord Publ, 70–83.

5. *Leksin, V.N. & A.N. Shvetsov*. (1999). Sushchnost, problemy i mekhanizmy organizatsii sistemy monitoringa regionalnykh situatsiy i regionalnykh problem [Essence, problems and mechanisms of forming of the Russian regional situations and regional problems monitoring system]. Sotsialno-ekonomicheskie protsessy perekhodnogo perioda. Trudy ISA RAN [Socio-economic Processes in the Transition Period. ISA RAS Proceedings]. Moscow, Editorial URSS, 3–23.

6. *Morev, M.V.* (2015). Opyt regionalnykh sotsiologicheskikh issledovaniy [Regional sociological research experience]. Ekonomicheskie i sotsialnye peremeny: fakty, tendentsii, prognoz [Economic and Social Changes: Facts, Trends, Forecast], 5, 54–77.

7. *Smirnov, M.A.* (2015). Territorii operezhayushchego razvitiya: vysokie riski i neobkhodimost aktivnoy otraslevoy gosudarstvennoy politiki [Advanced development territories: high risks and the need for an active sectoral policy of the State]. Finansovaya analitika: problemy i resheniya [Financial Analytics: Science and Experience], 16 (250), 58–68.

8. *Farman, I.P.* (2012). Monitoring kak metod issledovaniya i predstavleniya znaniy [Monitoring as a mean of research and representation of knowledge]. Filosofiya nauki [Philosophy of Science], 17, 256–269.

Information about the authors

Leksin, Vladimir Nikolaevich (Moscow, Russia) – Doctor of Sciences (Economics), Professor, Chief Researcher at the Federal Research Center «Informatics and Management», Russian Academy of Sciences (9, Prospekt 60-let Otyabrya, Moscow, 117312, Russia, e-mail: leksinvn@yandex.ru).

Porfiriev, Boris Nikolaevich (Moscow, Russia) – Corresponding Member of the RAS, Deputy Director for Research at the Institute of Economic Forecasting, Russian Academy of Sciences (47, Nakhimovskiy av., Moscow, 117418, Russia, e-mail: b_porfiriev@mail.ru).

11.04.2016 .

©, 2016

$$\bullet \quad \bullet \quad , \quad \bullet \quad \bullet \quad , \quad \bullet \quad \bullet$$

•

29

| 2009 年 12 月 31 日 | | |
|------------------|-----------|---|
| 流动资产 | 1,000,000 | - |
| 非流动资产 | 2,000,000 | - |
| 资产总计 | 3,000,000 | - |
| 流动负债 | 1,000,000 | - |
| 非流动负债 | 1,000,000 | - |
| 负债总计 | 2,000,000 | - |
| 所有者权益 | 1,000,000 | - |
| 负债和所有者权益总计 | 3,000,000 | - |
| 2010 年 12 月 31 日 | | |
| 流动资产 | 1,200,000 | - |
| 非流动资产 | 2,200,000 | - |
| 资产总计 | 3,400,000 | - |
| 流动负债 | 1,200,000 | - |
| 非流动负债 | 1,200,000 | - |
| 负债总计 | 2,400,000 | - |
| 所有者权益 | 1,000,000 | - |
| 负债和所有者权益总计 | 3,400,000 | - |
| 2011 年 12 月 31 日 | | |
| 流动资产 | 1,500,000 | - |
| 非流动资产 | 2,500,000 | - |
| 资产总计 | 4,000,000 | - |
| 流动负债 | 1,500,000 | - |
| 非流动负债 | 1,500,000 | - |
| 负债总计 | 3,000,000 | - |
| 所有者权益 | 1,000,000 | - |
| 负债和所有者权益总计 | 4,000,000 | - |

| 2025 . | | | |
|------------|------|------|------|
| - (1- -)* | | | |
| | | | |
| | 2009 | 2013 | 2014 |
| | 65 | 33 | 32 |
| | 31 | 33 | 37 |
| , , | 22 | 17 | 18 |
| - | | | |
| , , | 29 | 20 | 20 |
| | 5 | 7 | 6 |
| , - | 5 | 5 | 5 |
| | 9 | 9 | 10 |

* , « - » (: , 2015) « - » (2015, 45).

.

.

-

-

-

-

[1].

-

-

-

47%

33,5%,
147
10
(1/19)³,
(2/14),
(10/5),
(5/5)
«OCSiAl» –
«
2
76–102;
275–304.
3

| | |
|--------------|---|
| <hr/> | |
| « | » |
| «Smart-CVD», | |
| « | » |
| «OCSiAl» | « |
| [3]. | |

· -
-
2009–2015 . -
:

• , ,
;

• ();

• , ;

• ;

• , -

, , -
,

• ;

, -

·

· -

, -

,

, , « » -

| | | |
|---------|----------|-------|
| 3. | | - |
| | | . |
| | | - |
| | « | - |
| » | « | ». |
| | « | » |
| | « | ». |
| | | - |
| | | - |
| | | . |
| | , | - |
| 120–130 | . | |
| 4. | - | «13». |
| | | - |
| | | - |
| | , 2020 . | - |
| | . | - |
| | . | - |
| -4,5 | . | - |
| 5. | | . |
| | | - |
| | « | » |
| . . . | , | |
| | | , |
| | . | - |
| | , | - |
| | , | - |
| | . | |
| 6. | | . |
| | « | - |
| | ». | - |
| | — | - |
| | | - |
| | | , |

« » « ».

« »

(),

, , -

, , -

, , -

,

« -2020»

.

5

,

,

/

.

, ,

,

,

.

-

, ,

-

,

4.0.

-

5

43

| Содержание | | | |
|------------|--|---|---|
| 1 | Введение | — | — |
| 2 | 1. Общие сведения о предприятии | — | — |
| 3 | 2. Анализ финансового состояния предприятия | — | — |
| 4 | 3. Анализ эффективности деятельности предприятия | — | — |
| 5 | 4. Анализ ликвидности и платежеспособности предприятия | — | — |
| 6 | 5. Анализ рентабельности и маржинальности предприятия | — | — |
| 7 | 6. Анализ оборачиваемости активов и пассивов предприятия | — | — |
| 8 | 7. Анализ структуры капитала предприятия | — | — |
| 9 | 8. Анализ влияния факторов на финансовое состояние предприятия | — | — |
| 10 | 9. Анализ перспектив развития предприятия | — | — |
| 11 | 10. Заключение | — | — |
| 12 | Приложение | — | — |
| 13 | Список литературы | — | — |
| 14 | Список источников | — | — |
| 15 | Список использованных документов | — | — |
| 16 | Список использованных программ | — | — |
| 17 | Список использованных методов | — | — |
| 18 | Список использованных формул | — | — |
| 19 | Список использованных таблиц | — | — |
| 20 | Список использованных графиков | — | — |
| 21 | Список использованных диаграмм | — | — |
| 22 | Список использованных карт | — | — |
| 23 | Список использованных схем | — | — |
| 24 | Список использованных рисунков | — | — |
| 25 | Список использованных фотографий | — | — |
| 26 | Список использованных видеозаписей | — | — |
| 27 | Список использованных аудиозаписей | — | — |
| 28 | Список использованных документов | — | — |
| 29 | Список использованных программ | — | — |
| 30 | Список использованных методов | — | — |
| 31 | Список использованных формул | — | — |
| 32 | Список использованных таблиц | — | — |
| 33 | Список использованных графиков | — | — |
| 34 | Список использованных диаграмм | — | — |
| 35 | Список использованных карт | — | — |
| 36 | Список использованных схем | — | — |
| 37 | Список использованных рисунков | — | — |
| 38 | Список использованных фотографий | — | — |
| 39 | Список использованных видеозаписей | — | — |
| 40 | Список использованных аудиозаписей | — | — |
| 41 | Список использованных документов | — | — |
| 42 | Список использованных программ | — | — |
| 43 | Список использованных методов | — | — |
| 44 | Список использованных формул | — | — |
| 45 | Список использованных таблиц | — | — |
| 46 | Список использованных графиков | — | — |
| 47 | Список использованных диаграмм | — | — |
| 48 | Список использованных карт | — | — |
| 49 | Список использованных схем | — | — |
| 50 | Список использованных рисунков | — | — |
| 51 | Список использованных фотографий | — | — |
| 52 | Список использованных видеозаписей | — | — |
| 53 | Список использованных аудиозаписей | — | — |
| 54 | Список использованных документов | — | — |
| 55 | Список использованных программ | — | — |
| 56 | Список использованных методов | — | — |
| 57 | Список использованных формул | — | — |
| 58 | Список использованных таблиц | — | — |
| 59 | Список использованных графиков | — | — |
| 60 | Список использованных диаграмм | — | — |
| 61 | Список использованных карт | — | — |
| 62 | Список использованных схем | — | — |
| 63 | Список использованных рисунков | — | — |
| 64 | Список использованных фотографий | — | — |
| 65 | Список использованных видеозаписей | — | — |
| 66 | Список использованных аудиозаписей | — | — |
| 67 | Список использованных документов | — | — |
| 68 | Список использованных программ | — | — |
| 69 | Список использованных методов | — | — |
| 70 | Список использованных формул | — | — |
| 71 | Список использованных таблиц | — | — |
| 72 | Список использованных графиков | — | — |
| 73 | Список использованных диаграмм | — | — |
| 74 | Список использованных карт | — | — |
| 75 | Список использованных схем | — | — |
| 76 | Список использованных рисунков | — | — |
| 77 | Список использованных фотографий | — | — |
| 78 | Список использованных видеозаписей | — | — |
| 79 | Список использованных аудиозаписей | — | — |
| 80 | Список использованных документов | — | — |
| 81 | Список использованных программ | — | — |
| 82 | Список использованных методов | — | — |
| 83 | Список использованных формул | — | — |
| 84 | Список использованных таблиц | — | — |
| 85 | Список использованных графиков | — | — |
| 86 | Список использованных диаграмм | — | — |
| 87 | Список использованных карт | — | — |
| 88 | Список использованных схем | — | — |
| 89 | Список использованных рисунков | — | — |
| 90 | Список использованных фотографий | — | — |
| 91 | Список использованных видеозаписей | — | — |
| 92 | Список использованных аудиозаписей | — | — |
| 93 | Список использованных документов | — | — |
| 94 | Список использованных программ | — | — |
| 95 | Список использованных методов | — | — |
| 96 | Список использованных формул | — | — |
| 97 | Список использованных таблиц | — | — |
| 98 | Список использованных графиков | — | — |
| 99 | Список использованных диаграмм | — | — |
| 100 | Список использованных карт | — | — |

— — —

—

,

—

—

,

—

—

—

//

| | | | |
|---|----------------------------|-------------------------|------------------|
| | | | - - , . |
| - | - - - - - - | 2-2,5 - - | 150 |
| | - - | , | 15 |
| | - | , | 45 |
| | - | , | 75 |
| « | - - - | , | 6 |

| | | |
|-----------|--------|-------|
| | «SPF-» | |
| () | - | |
| - | (| - |
| |) | - |
| , | | - |
| | | - |
| | | , |
| | | - |
| | | - |
| , | | - |
| | | - |
| | | - |
| | | , |
| 25%. | | |
| 2016–2020 | 35–50 | ., |
| 50% | | , 25% |
| 2,5 | | - |
| | | - |
| | | - |
| | | - |
| | | - |

—

—

,

—

,

—

—

—

•

—

,

$$\vdots$$

•

,

;

•

—

,

—

—

;

•

,

;

•

,

—

;

•

2.

•

827,42

,

—

—

—

—

—

—

»

»⁸.

8.

—

—

9

—

,

XI.174 (XI.174.1.1).
0325-2014-00017

- 51

-
6. - . : -
// : . – 2015. – 4 (88). – . 261–275.
 7. -
/ . . . , . . . – :
- , 2014. – 268 .
 8. . . // : . –
2016. – 1 (89). – . 108–135.

(,) – -
 , . (630090,
 , 17, -mail: ieie.nsc.ru).
A (,) –
 , (630090,
 , 17, -mail:
galina.untura@gmail.com).
(,) –
 , (630090,
 , 17, -mail: markova.pro@yandex.ru).

DOI: 10.15372/REG20160302

Region: Economics & Sociology, 2016, No. 3 (91), p. 28–54

V.V. Kuleshov, G.A. Untura, V.D. Markova

DEVELOPING THE KNOWLEDGE ECONOMY: THE ROLE OF INNOVATION PROJECTS IN THE REGIONAL REINDUSTRIALIZATION PROGRAM

The article shows the reindustrialization program as a means for strategic planning and organizing cooperation between innovation project participants.

Here we prove that this strategic maneuver of the reindustrialization program and its innovations thrust will help to establish cooperation between scientific institutes, universities, and innovative companies and to create a demand for innovation since large businesses are not yet interested in innovative development. We define a skill set for main innovation actors in Novosibirsk Oblast, who are able to carry out innovation projects in order to develop the knowledge economy. In this article, we propose a reindustrialization project typology from the standpoint of the level and significance of issues to solve and their impact on region's economy; we determine flagship and infrastructure projects, projects of national, inter-regional and regional levels. We mark out some risks related to project implementation and methods to damp them in the course of the reindustrialization program through a combination of federal and regional support measures.

Keywords: Novosibirsk Oblast; innovation; science; reindustrialization; project typology; infrastructural projects; state support; risks

The publication is prepared within the priority XI.174 (project No. XI.174.1.1) according to the research plan of the IEIE SB RAS

References

1. Aganbegyan, A.G. (2016). Kak preodolet stagnatsiyu i vosstanovit ekonomicheskoe razvitiye [How to overcome stagnation and restore economic growth]. EKO, 2, 5–14.
2. Yevseyenko, A.V., V.V. Kuleshov (Ed.) & G.A. Untura. (2014). Formirovaniye natsionalnykh i regionalnykh innovatsionnykh institutov v Rossii [Formation of national and regional innovation institutes in Russia]. Sovremennaya rol ekonomiki Sibiri v narodnokhozyaystvennom komplekse Rossii [Present-day Role of Siberian Economy in the Russian Macroeconomic Complex]. Novosibirsk, IEIE SB RAS Publ., 107–136.
3. Kravchenko, N.A., V.I. Klistorin, G.V. Zhdan & P.A. Averkin. (2016). Sistema upravleniya programmoy reindustrializatsii ekonomiki Novosibirskoy oblasti [Management system for the Program for Reindustrialization of the Economy of Novosibirsk Oblast]. Region: ekonomika i sotsiologiya [Region: Economics and Sociology], 2 (90), 62–80.
4. Kuleshov, V.V. & V.Ye. Seliverstov. (2015). Programma reindustrializatsii ekonomiki Novosibirskoy oblasti: ideologiya razrabotki i osnovnye napravleniya realizatsii [Program for Reindustrialization of the Economy of Novosibirsk Oblast: ideology and

main directions for its implementation]. Region: ekonomika i sotsiologiya [Region: Economics and Sociology], 3 (87), 88–123.

5. *Mindeli, L.E. & T.Yu. Medvedeva.* (2013). Akademicheskaya nauka v innovatsionnom razvitii Rossii [Academic Science in the Innovation Development of Russia]. Moscow, ISS RAS Publ., 272.

6. *Pálné Kovács, I.* (2015). Razvitie ekonomiki znaniy: rol mestnykh organov vlasti [Local knowledge based development. What can local governments do for it?]. Region: ekonomika i sotsiologiya [Region: Economics and Sociology], 4 (88), 261–275.

7. *Titov, V.V. & V.D. Markova* (Eds.). (2014). Problemy razvitiya innovatsionnogo predprinimatelstva na promyshlennykh predpriyatiyakh [Problems of Developing Innovation Entrepreneurship in Manufacturing Facilities]. Novosibirsk, IEIE SB RAS Publ., 268.

8. *Seliverstov, V.Ye.* (2016). Programma reindustrializatsii ekonomiki Novosibirskoy oblasti: osnovnye itogi razrabotki [Program for Reindustrialization of the Economy of Novosibirsk Oblast: main outcomes of its development]. Region: ekonomika i sotsiologiya [Region: Economics and Sociology], 1 (89), 108–135.

Information about the authors

Kuleshov, Valeriy Vladimirovich (Novosibirsk, Russia) – Full Member of RAS, Director of the Institute of Economics and Industrial Engineering, Siberian Branch of the Russian Academy of Sciences (17, Ac. Lavrentiev av., Novosibirsk, 630090, Russia, e-mail: ieie@ieie.nsc.ru).

Untura, Galina Afanasievna (Novosibirsk, Russia) – Doctor of Sciences (Economics), Chief Researcher at the Institute of Economics and Industrial Engineering, Siberian Branch of the Russian Academy of Sciences (17, Ac. Lavrentiev av., Novosibirsk, 630090, Russia, e-mail: galina.untura@gmail.com).

Markova, Vera Dmitrievna (Novosibirsk, Russia) – Doctor of Sciences (Economics), Head of Department at the Institute of Economics and Industrial Engineering, Siberian Branch of the Russian Academy of Sciences (17, Ac. Lavrentiev av., Novosibirsk, 630090, Russia, e-mail: markova.pro@yandex.ru).

11.04.2016 .

© . . . , . . . , . . . , 2016

[illegible]

11; 13].

， ， ， ： -
(
(，)
(
)。 ， 。 [13]

56 1980–2009 。 -

。
，
，
*。
，
(。
)。

。 ， 。
：
，
[17]。 。
：
，
[18]。 。

，
[8]。

*
∴ 。
2014. – 2 (38). – . 238–248; // . –
//
。 – 2014. – 3. – . 44–66.

58

60

, , ,
 , , -
 -
 . , -
 , -
 , ,
 , .
 -
 -

2013 .

1.

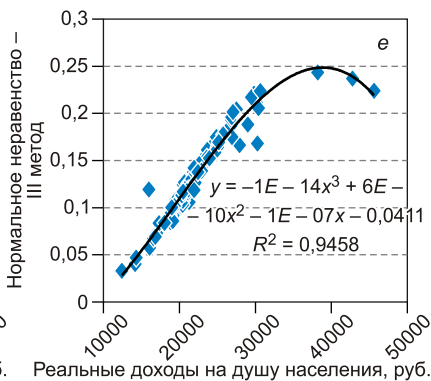
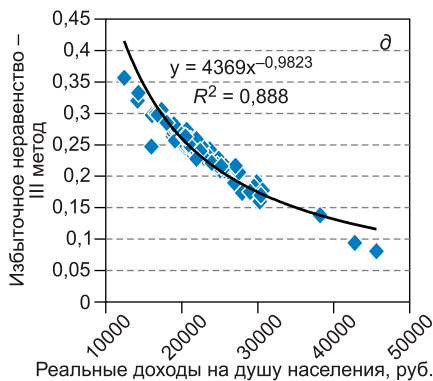
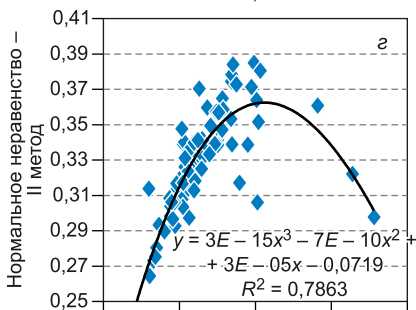
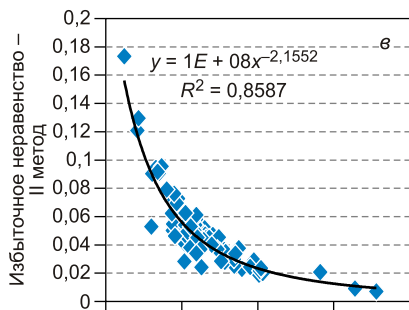
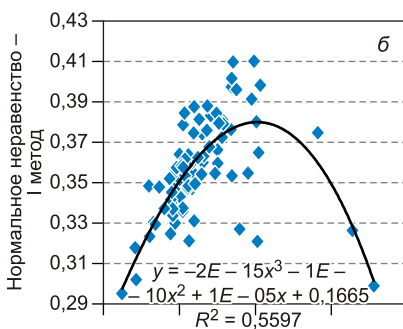
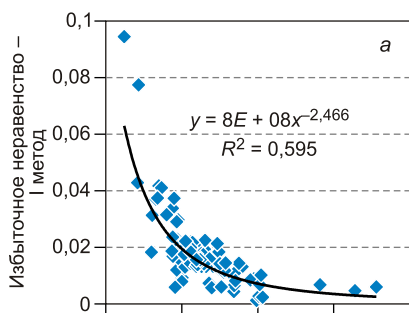
:

$$G = 1 - \sum_{i=1}^n (X_{i-1} + X_i) \quad i \quad ,$$
 $X_i -$, 1-
 $i-$; $i -$ $i-$.

2.

, :
) . -
 « »;
) . -
 « -
 » ;
) . -
 « » ,
 (

| | | | |
|-----------|-----------|-----------|-----------|
| (10,57%), | - | (10,08%), | - |
| (10,19%). | - | | - |
| , | | , | |
| - | (0,3%), | (0,58%), | - |
| (0,72%). | | | - |
| | | | - |
| | | | - |
| | | | - |
| | | | - |
| (44,49%), | | (34,16%), | |
| (33,52%). | | 24–25% | - |
| | | | - |
| | | | - |
| | | | - |
| (2,34%), | - | (2,73%) | (5,47%), |
| | | (4,95%), | - |
| (5%) | - | (6,41%). | |
| 6–7% | | | |
| | | | - |
| | | | - |
| | | | - |
| | | | - |
| | | | - |
| 91,49%, | - 88,84%, | - 87,57%, | |
| | - 81,1%, | - | - |
| - 81,63%, | | - 80,36%, | - |
| - 83,73%, | | - 78,53%. | - |
| | | | - |
| (26,55%), | - | (28,43%), | (36,19%). |
| 50% | | | - |
| | | | - |
| | | | - |
| | | | - |
| | | | - |



а, —

; , —

; , —

:

, 2016, 3 (91)

65

| 2013 . | | | | | | | | | | |
|--------|-------|-------|-------|-------|-------|-------|-------|-----|---|---|
| | | I | | | II | | | III | | |
| | | - | - | - | - | - | - | - | - | - |
| : | - | | - | - | - | - | - | - | - | - |
| | | | - | - | - | - | - | - | - | - |
| | | | - | - | - | - | - | - | - | - |
| | | | - | - | - | - | - | - | - | - |
| 1000 | 0,63 | 0,42 | -0,34 | 0,50 | -0,42 | 0,64 | -0,61 | | | |
| | 0,84 | 0,66 | -0,69 | 0,79 | -0,76 | 0,96 | -0,96 | | | |
| | 0,62 | 0,29 | -0,36 | 0,46 | -0,51 | 0,62 | -0,67 | | | |
| | -0,44 | -0,63 | 0,90 | -0,71 | 0,79 | -0,73 | 0,78 | | | |
| - | -0,36 | -0,04 | 0,15 | -0,20 | 0,30 | -0,34 | 0,42 | | | |
| | 0,23 | -0,01 | -0,32 | 0,13 | -0,34 | 0,32 | -0,49 | | | |
| | 0,33 | 0,21 | -0,54 | 0,34 | -0,53 | 0,47 | -0,61 | | | |
| | -0,26 | -0,33 | 0,51 | -0,39 | 0,46 | -0,38 | 0,43 | | | |
| I | -0,22 | -0,07 | 0,21 | -0,22 | 0,33 | -0,26 | 0,33 | | | |
| | -0,39 | -0,24 | 0,41 | -0,38 | 0,47 | -0,43 | 0,49 | | | |

| | | I | I | II | II | III | III | III | III |
|-----|---|-------|-------|-------|-------|-------|-------|-------|-------|
| 100 | - | - | - | - | - | - | - | - | - |
| | | | | | | | | | |
| | | | | | | | | | |
| | | | | | | | | | |
| 100 | ; | 0,39 | 0,33 | -0,56 | 0,49 | -0,62 | 0,50 | -0,58 | -0,58 |
| | | -0,10 | 0,27 | -0,19 | 0,13 | -0,02 | 0,01 | 0,08 | 0,08 |
| | | 0,37 | 0,51 | -0,45 | 0,42 | -0,29 | 0,38 | -0,29 | -0,29 |
| | | | | | | | | | |
| 100 | ; | 0,03 | -0,24 | 0,01 | -0,08 | -0,12 | -0,03 | -0,10 | -0,10 |
| | | -0,71 | -0,60 | 0,61 | -0,71 | 0,67 | -0,78 | 0,76 | 0,76 |
| | | 0,46 | 0,29 | -0,38 | 0,34 | -0,36 | 0,40 | -0,42 | -0,42 |
| | | | | | | | | | |
| 100 | - | -0,14 | -0,05 | 0,17 | -0,07 | 0,14 | -0,12 | 0,17 | 0,17 |
| | | | | | | | | | |
| | | | | | | | | | |
| | | | | | | | | | |
| 100 | ; | -0,51 | -0,53 | 0,34 | -0,50 | 0,32 | -0,56 | 0,45 | 0,45 |
| | | -0,36 | -0,23 | 0,26 | -0,31 | 0,31 | -0,36 | 0,37 | 0,37 |
| | | | | | | | | | |
| | | | | | | | | | |
| 100 | - | -0,48 | -0,57 | 0,60 | -0,60 | 0,56 | -0,58 | 0,54 | 0,54 |
| | | | | | | | | | |
| | | | | | | | | | |
| | | | | | | | | | |

| | | I | | | II | | | III | | |
|-----|-------|-------|-------|-------|------|-------|------|-------|---|---|
| | | - | - | - | - | - | - | - | - | - |
| | | - | - | - | - | - | - | - | - | - |
| | | - | - | - | - | - | - | - | - | - |
| | | | | | | | | | | |
| : | - | 0,32 | 0,15 | -0,18 | 0,25 | -0,27 | 0,34 | -0,37 | | |
| | | 0,23 | 0,19 | -0,14 | 0,25 | -0,21 | 0,25 | -0,23 | | |
| | | 0,30 | -0,14 | -0,05 | 0,08 | -0,25 | 0,26 | -0,40 | | |
| | | 0,58 | 0,35 | -0,50 | 0,51 | -0,59 | 0,58 | -0,64 | | |
| : | (1) | 0,54 | 0,15 | -0,35 | 0,37 | -0,51 | 0,51 | -0,63 | | |
| | | -0,07 | 0,12 | -0,45 | 0,18 | -0,35 | 0,19 | -0,30 | | |
| | | 0,58 | 0,28 | -0,27 | 0,31 | -0,28 | 0,46 | -0,45 | | |
| | | 0,43 | 0,35 | -0,17 | 0,39 | -0,26 | 0,41 | -0,32 | | |
| | | | | | | | | | | |
| () | - | | | | | | | | | |
| | | | | | | | | | | |
| | | | | | | | | | | |
| | | | | | | | | | | |

. : -
 , -
 . , -
 , -
 , -
 , -
 , -
 (: -
). -
 , .
 - , -
 (, -
) 2013 .
 ,
 2000 . (Y). :
 (T); -
 2000 . (K); -
 (Zt); (D); -
 , (Cr); -
 (G).

MS

Exel Gretl :

$$\begin{aligned}
 \ln(\hat{Y}) &= 5,118 + 0,477 \ln(T) + 0,228 \ln(K) + 0,078 \ln(Zt) + \\
 &0,075 \ln(D) + 0,109 \ln(Cr) + 2,474 \ln(G), \\
 \hat{Y} &= 166,96 T^{0,477} K^{0,228} Zt^{0,078} Cr^{0,109} G^{2,474}, R^2 = 0,967.
 \end{aligned}$$

-
-
-
-
-
-

,

-
-
-
-
-
-

-

-
•
-

• — ,

• — ,

,

,

•

—
—
—

—
—
•
—

•

-

3. . . . :
// . – 2011. – 9. – . 197–201.
4. „ .
. . . . – . : , 2002. – 317 .
5. „ . . . ,
: . – . : - , 2009. – 192 .
6. *Almås, I.* International income inequality: measuring PPP bias by estimating Engel curves for food // *The American Economic Review*. – 2012. – Vol. 102, No. 2. – P. 1093–1117.
7. *Amos O.J.* Unbalanced regional growth and regional income inequality in the latter stages of development // *Regional Science and Urban Economics*. – 1988. – Vol. 18 (4). – P. 549–566.
8. *Barrios S., Strobl E.* The dynamics of regional inequalities // *Regional Science and Urban Economics*. – 2009. – Vol. 39 (5). – P. 575–591.
9. *Deaton A.* Price indexes, inequality, and the measurement of world poverty // *The American Economic Review*. – 2010. – Vol. 100, No. 1. – P. 3–34.
10. *Erosa A., Koreshkova T., Restuccia D.* How important is human capital? A quantitative theory assessment of world income inequality // *The Review of Economic Studies*. – 2010. – Vol. 77, No. 4. – P. 1421–1449.
11. *Ezcurra R., Rapun M.* Regional disparities and national development revisited: the case of Western Europe // *European Urban And Regional Studies*. – 2006. – Vol. 13 (4). – P. 355–369.
12. *Kuznets S.* Economic growth and income inequality // *The American Economic Review*. – 1955. – Vol. 45 (1). – P. 1–28.
13. *Lessmann Ch.* Spatial inequality and development – is there an inverted-U relationship? // *Journal of Development Economics*. – 2014. – Vol. 106. – P. 35–51.
14. *Milanovic B.* Global inequality recalculated and updated: the effect of new PPP estimates on global inequality and 2005 estimates // *Journal of Economic Inequality*. – 2012. – Vol. 10. – P. 1–18.
15. *Remington T.F.* Why is interregional inequality in Russia and China not falling? // *Communist and Post-Communist Studies*. – 2015. – Vol. 48. – P. 1–13.
16. *Sanderson M.R.* Does immigration have a Matthew Effect? A cross-national analysis of international migration and international income inequality, 1960–2005 // *Social Science Research*. – 2013. – Vol. 42. – P. 683–697.
17. *Williamson J.G.* Regional inequality and the process of national development: a description of patterns // *Economic Development and Cultural Change*. – 1965. – Vol. 13, No. 4, art 2. – P. 1–84.
18. *Yemtsov R.* Quo vadis? Inequality and poverty dynamics across Russian regions // *Spatial Inequality and Development* / Ed. by R. Kanbur, A. Venables. – N.Y.: Oxford University Press, 2005. – P. 348–396.

19. Zeng Dao-Zhi. Capital mobility and spatial inequalities in income and industrial location // Journal of Economic Inequality. – 2015. – Vol. 10. – P. 1–18.

(,) –
 , .
 . . .
(603000, , 37,
e-mail: mmuri@yandex.ru).

DOI: 10.15372/REG20160303

Region: Economics & Sociology, 2016, No. 3 (91), p. 55–75

M.Yu. Malkina

THE RELATIONSHIP OF NORMAL AND EXCESSIVE PERSONAL INCOME INEQUALITY WITH REGIONAL ECONOMIES PERFORMANCE INDICATORS

The article uses the following methods: A.Yu. Shevyakov's approach to the decomposition of the Gini coefficient on the normal and excessive inequality; the full deflation method for evaluation of the real income and real productivity; correlation and regression analysis, and construction of Cobb-Douglas type production functions. We proposed three levels to split the normal and excessive inequality: the poverty line, the social minimum boundary, and the social well-being boundary. There were obtained an inverse relationship between real per capita income and the excessive inequality Gini coefficient, as well as some sort of Kuznets curve for the relationship between real per capita income and the normal inequality Gini coefficient for Russian regions in 2013. The correlations of normal and excessive inequality with the general development indicators, as well as indicators of the population composition and dynamics, the structures of income and gross regional product, industrial structure of the economy, and the population's wealth were estimated. By incorporating

the separated Gini coefficients in interregional five-factor Cobb-Douglas production function, we confirmed the positive correlation of normal inequality and negative correlation of excessive inequality with production in Russian regions. It was concluded that excessive inequality, on the one hand, is the result of low development, and, on the other hand, suppresses production incentives in regions. At the same time, the normal inequality promotes economic development, which is at first accompanied by growth in this type of inequality, and then by its decline.

Keywords: region; personal income; the Gini coefficient; normal and excessive inequality; development indicators; Cobb-Douglas function

The research is prepared within the framework of the project No. 15-02-00638 supported by funding from the Russian Foundation for Humanities

References

1. *Piketty, T. (2015). Kapital v XXI veke [Capital in the Twenty-First Century]. Moscow, Ad Marginem Press, 592.*
2. *Shevyakov, A.Yu. (2011). Neravenstvo dokhodov kak faktor ekonomicheskogo i demograficheskogo rosta [Income inequality as a factor of economic and demographic dynamics]. Innovatsii [Innovations], 1 (147), 7–19.*
3. *Shevyakov, A.Yu. (2011). Ekonomicheskoe neravenstvo: tormoz demograficheskogo rosta [Economic inequality: an obstacle to economic growth]. Zhurnal novoy ekonomicheskoy assotsiatsii [Journal of the New Economic Association], 9, 197–201.*
4. *Shevyakov, A., A. Kiruta & I.I. Yeliseyeva (Ed.). (2002). Izmerenie ekonomicheskogo neravenstva [Measuring of Economic Inequality]. Moscow, Leto Publ., 317.*
5. *Shevyakov, A.Yu. & A.Ya. Kiruta. (2009). Neravenstvo, ekonomicheskii rost i demografiya: neissledovannye vzaimosvyazi [Inequality, Economic Growth and Demography: Unexplored Interrelations]. Moscow, M-Studio Publ., 192.*
6. *Almås, I. (2012). International income inequality: measuring PPP bias by estimating Engel curves for food. The American Economic Review, Vol. 102, No. 2 (April), 1093–1117.*
7. *Amos, O.J. (1988). Unbalanced regional growth and regional income inequality in the latter stages of development. Regional Science and Urban Economics, 18 (4), 549–566.*
8. *Barrios, S. & E. Strobl. (2009). The dynamics of regional inequalities. Regional Science and Urban Economics, 39 (5), 575–591.*

-
9. *Deaton, A.* (2010). Price indexes, inequality, and the measurement of world poverty. *The American Economic Review*, Vol. 100, No. 1 (March), 3–34.
 10. *Erosa, A., T. Koreshkova & D. Restuccia.* (2010). How important is human capital? A quantitative theory assessment of world income inequality. *The Review of Economic Studies*, Vol. 77, No. 4 (October), 1421–1449.
 11. *Ezcurra, R. & M. Rapun.* (2006). Regional disparities and national development revisited: the case of Western Europe. *European Urban and Regional Studies*, 13 (4), 355–369.
 12. *Kuznets, S.* (1995). Economic growth and income inequality. *The American Economic Review*, 45 (1), 1–28.
 13. *Lessmann, Ch.* (2014). Spatial inequality and development – is there an inverted-U relationship? *Journal of Development Economics*, 106, 35–51.
 14. *Milanovic, B.* (2012). Global inequality recalculated and updated: the effect of new PPP estimates on global inequality and 2005 estimates. *Journal of Economic Inequality*, 10, 1–18.
 15. *Remington, T.F.* (2015). Why is interregional inequality in Russia and China not falling? *Communist and Post-Communist Studies*, 48, 1–13.
 16. *Sanderson, M.R.* (2013). Does immigration have a Matthew Effect? A cross-national analysis of international migration and international income inequality, 1960–2005. *Social Science Research*, 42, 683–697.
 17. *Williamson, J.G.* (1965). Regional inequality and the process of national development: a description of patterns. *Economic Development and Cultural Change*, Vol. 13, No. 4, art 2, 1–84.
 18. *Yemtsov, R; R. Kanbur & A. Venables* (Eds.). (2005). Quo vadis? Inequality and poverty dynamics across Russian regions. *Spatial Inequality and Development*. New York, Oxford University Press, 348–396.
 19. *Zeng, Dao-Zhi.* (2015). Capital mobility and spatial inequalities in income and industrial location. *Journal of Economic Inequality*, 10, 1–18.

Information about the author

Malkina, Marina Yurievna (Nizhniy Novgorod, Russia) – Doctor of Sciences (Economics), Professor at National Research Lobachevsky State University of Nizhny Novgorod (37, Bolshaya Pokrovskaya st., Nizhniy Novgorod, 603000, Russia, e-mail: mmuri@yandex.ru).

25.04.2016 .

© . ., 2016

[1; 3]. -

—

•

• — —

•

,

•

,

,

,

,

•

,

•

•

17

,

1979–1982

•

2

•

[6].

,

•

•

$$(\quad)^*$$

•

—

2

—

•

$$\vdots$$

●

2

—

,

;

●

—

—

;

●

—

$$(\quad),$$

;

●

•

—

1990–2013 .

2

—

—

•

$$\vdots$$

•

—

2

—

*

,

,

—

—

()

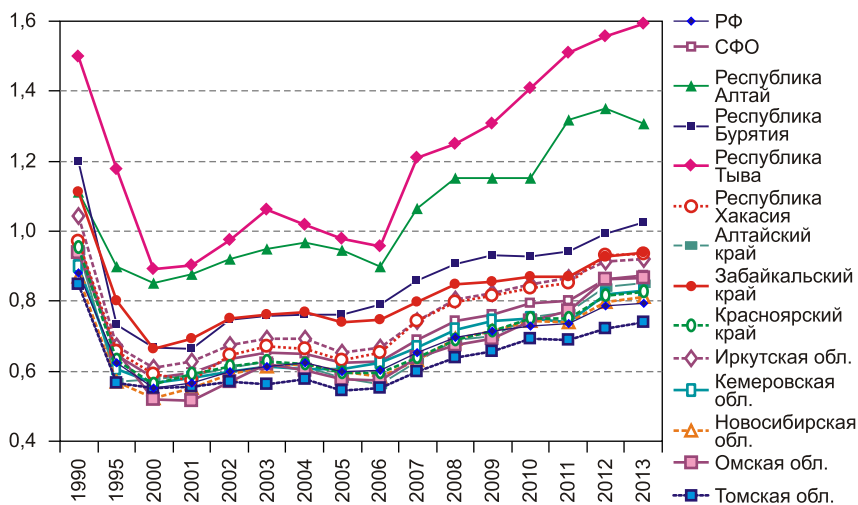
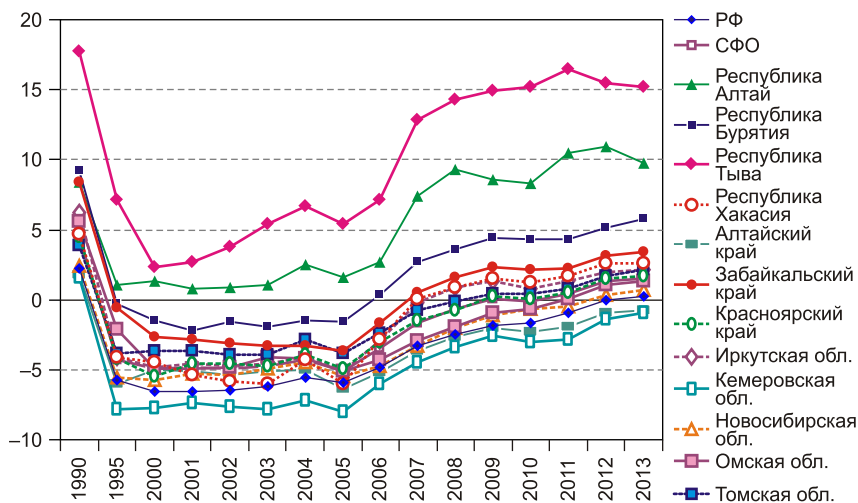
,

2

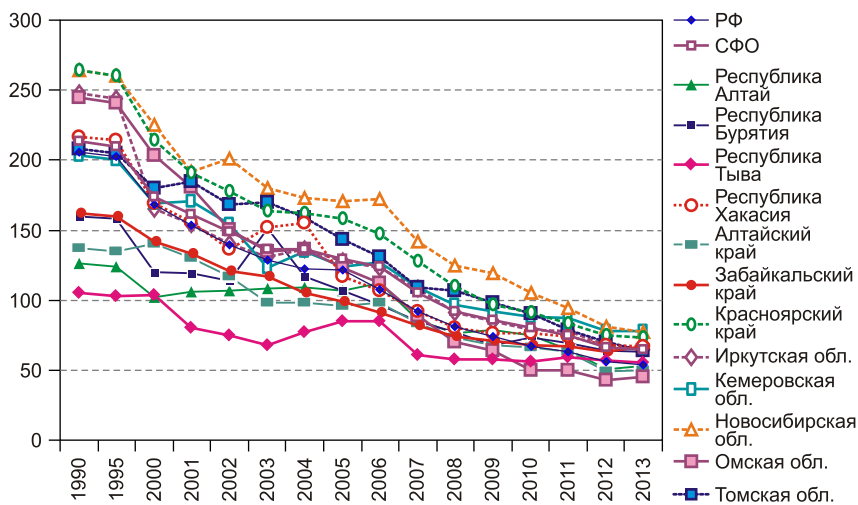
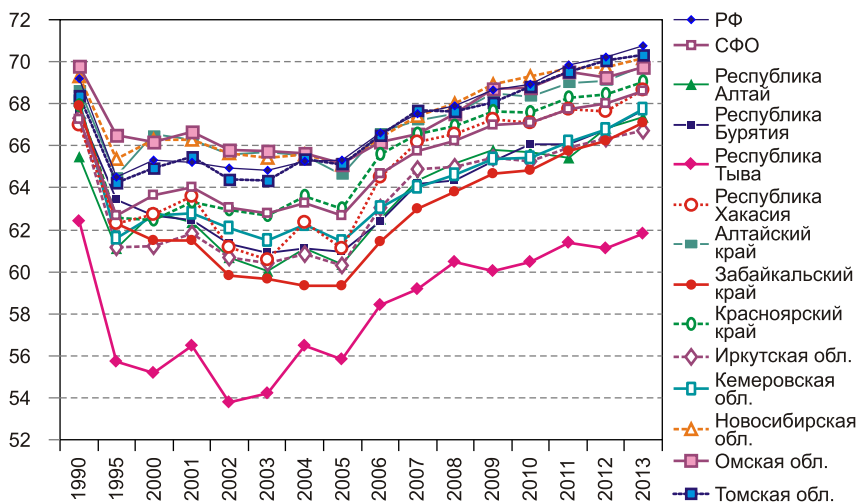
[5].

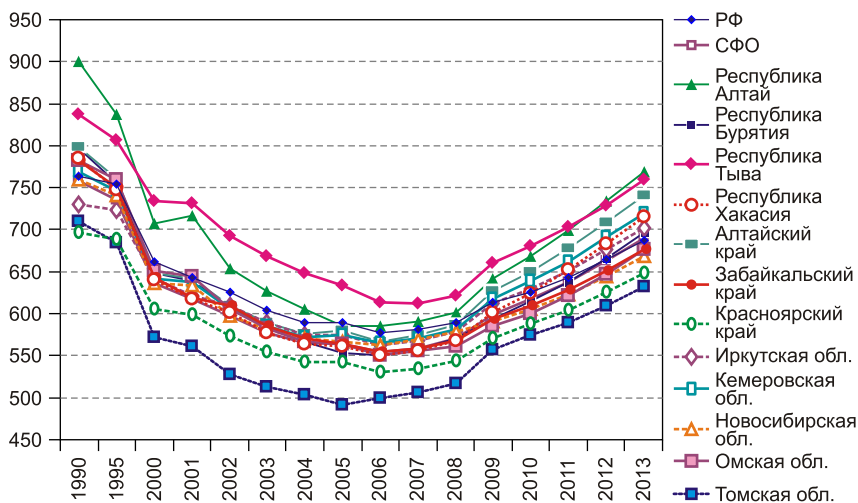
$$\vdots$$

, 2016, 3 (91)



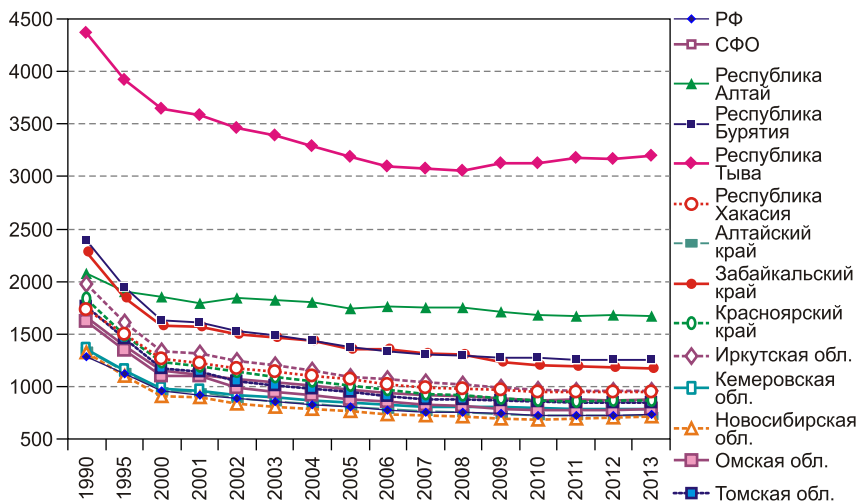
| | | |
|--------|-------------|---------|
| | 2006 . | - |
| | 2013 ., | - |
| 0,2‰), | 1,5‰ (| - |
| | (15,2‰) | - |
| | (9,8‰), | - |
| | (. . 2). | - |
| | : | , |
| | , | - |
| 2014 . | | - |
| | | - |
| | | - |
| | | - |
| | 2014 . 3,5, | - |
| - | , | - |
| - | (2,9). | 2005 ., |
| | , | - |
| | 2005–2014 . | 2,1. - |
| | | 67% |
| | 2010 . | - |
| | 2,31, | - |
| 2014 . | 2,9. | , |
| | (1,6) | - |
| | (1,9) | - |
| | 2005–2014 . | - |
| 1,5 | 46%. | - |
| 2013 . | , | - |
| | , | - |





. 5.

1990–2013 ., 1000 .



. 6.

1990–2013 ., 1000 .

| | | |
|-------------------|------------------|------|
| 100) | . | - |
| | 100 | |
| , | . | , |
| , | . | - |
| | XXI . | |
| 2007 . | . | |
| (| | - |
| 1000 . |) | - |
| , | | - |
| . | 2013 . | - |
| (769) | (760), | - |
| | , | - |
| (. . 5). | : | - |
| 2013 . | 632 649 . 1000 . | - |
| | | - |
| | , | - |
| | | - |
| 1000 . | (| - |
| |), | - |
| (. . 6). | | 1660 |
| 1990 . 872 2013 . | | - |
| 2013 . | | - |

, ,
 .
 , , , , -
 -
 -
 .
 , -
 . -
 , . [2],
 /
 :

$$z_{j,t} = \frac{1}{i} a_{i,j,t} (u_{i,j,t})^{2,0,5} .$$

$$\frac{z_{j,t} - x_{i,j,t}}{(X_{i,j} - x_{i,j}), x_{i,j,t} - x_{i,j,t}} t; u_{i,j,t} = (X_{i,j} - x_{i,j,t}) / j$$

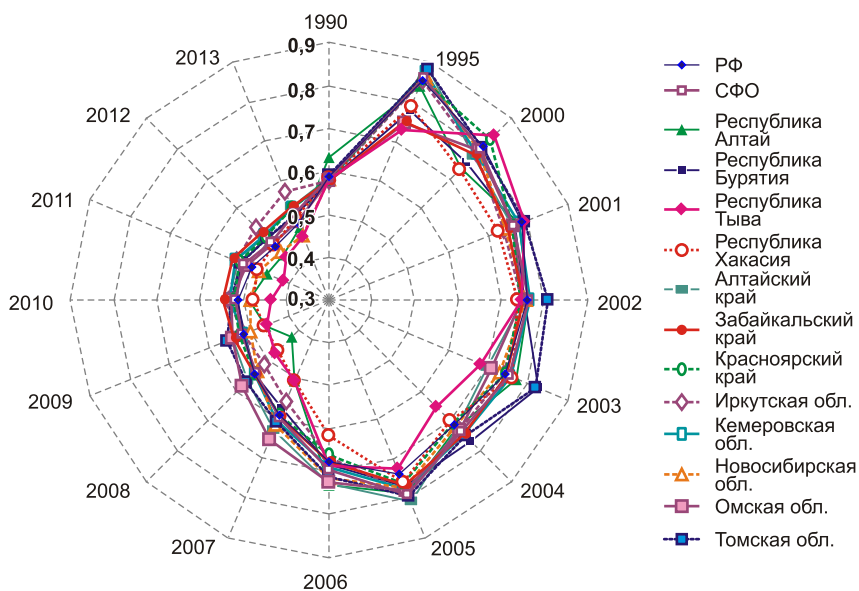
$$t (i = 1, 2, \dots, m; j = 1, 2, \dots, n; t = 1, 2, \dots, T); X_{i,j} -$$

$$j, x_{i,j} - t=1, 2, \dots, T; a_{i,j,t} -$$

$$(), .$$

$$z_{j,t} ,$$

.
 1990–2013 ., . 7,
 .
 1990–1995 ., 1995 .
 () ,
 -



. 7.

/

1990–2013

. 5

0,58

0,88.

(0,72)

, 1995

(0,84)

2000

1995–2000

2000

2005

2005–2012

| | | | |
|---------------------------|------------------------------|---------|---|
| | | 0,25 | - |
| | | 0,37 | |
| ， | 2013 ． | | - |
| | (0,45) | (0,46), | - |
| | (0,57). | | |
| 2013 ． | 2012 ． | | - |
| | | | |
| | | | - |
| | | | |
| | | | - |
| | | | |
| | 6,1%, | — 3,2%. | - |
| | | | - |
| ， | | | |
| 1,1%. | | | |
| | 7,2%. | | |
| | | | |
| | 6%. | | |
| | | 1,5—4%. | |
| | | | - |
| | | | - |
| | 1990—2012 ． | | - |
| ： | 1995 ．, 2001—2003 ．, 2009 ．, | | |
| | — 2004 ．, 2009—2012 ． | | - |
| | | | - |
| | (． ． 7) | | - |
| | | | - |
| | (2006—2009 ．) | | - |
| (1995 ．, 2005 ．, 2006 ．), | | | - |
| | | | - |
| | | | - |
| | | | |
| | | | |
| | | | |

| Содержание | | | |
|------------|-------------------------------------|-----|---|
| 1 | Введение | 1 | - |
| 2 | 1.1. Актуальность темы исследования | 2 | - |
| 3 | 1.2. Цели и задачи исследования | 3 | - |
| 4 | 1.3. Методология исследования | 4 | - |
| 5 | 1.4. Структура работы | 5 | - |
| 6 | 2. Анализ литературы | 6 | - |
| 7 | 2.1. Теоретические основы | 7 | - |
| 8 | 2.2. Эмпирические исследования | 8 | - |
| 9 | 2.3. Критический анализ | 9 | - |
| 10 | 3. Методология исследования | 10 | - |
| 11 | 3.1. Выбор методов | 11 | - |
| 12 | 3.2. Описание методов | 12 | - |
| 13 | 3.3. Оценка достоверности | 13 | - |
| 14 | 3.4. Результаты исследования | 14 | - |
| 15 | 3.5. Выводы | 15 | - |
| 16 | 4. Заключение | 16 | - |
| 17 | 4.1. Основные выводы | 17 | - |
| 18 | 4.2. Рекомендации | 18 | - |
| 19 | 4.3. Перспективы исследования | 19 | - |
| 20 | 4.4. Заключение | 20 | - |
| 21 | 5. Список литературы | 21 | - |
| 22 | 5.1. Отечественная литература | 22 | - |
| 23 | 5.2. Иностранная литература | 23 | - |
| 24 | 5.3. Интернет-ресурсы | 24 | - |
| 25 | 5.4. Заключение | 25 | - |
| 26 | 6. Приложение | 26 | - |
| 27 | 6.1. Таблица 1 | 27 | - |
| 28 | 6.2. Таблица 2 | 28 | - |
| 29 | 6.3. Таблица 3 | 29 | - |
| 30 | 6.4. Таблица 4 | 30 | - |
| 31 | 6.5. Таблица 5 | 31 | - |
| 32 | 6.6. Таблица 6 | 32 | - |
| 33 | 6.7. Таблица 7 | 33 | - |
| 34 | 6.8. Таблица 8 | 34 | - |
| 35 | 6.9. Таблица 9 | 35 | - |
| 36 | 6.10. Таблица 10 | 36 | - |
| 37 | 6.11. Таблица 11 | 37 | - |
| 38 | 6.12. Таблица 12 | 38 | - |
| 39 | 6.13. Таблица 13 | 39 | - |
| 40 | 6.14. Таблица 14 | 40 | - |
| 41 | 6.15. Таблица 15 | 41 | - |
| 42 | 6.16. Таблица 16 | 42 | - |
| 43 | 6.17. Таблица 17 | 43 | - |
| 44 | 6.18. Таблица 18 | 44 | - |
| 45 | 6.19. Таблица 19 | 45 | - |
| 46 | 6.20. Таблица 20 | 46 | - |
| 47 | 6.21. Таблица 21 | 47 | - |
| 48 | 6.22. Таблица 22 | 48 | - |
| 49 | 6.23. Таблица 23 | 49 | - |
| 50 | 6.24. Таблица 24 | 50 | - |
| 51 | 6.25. Таблица 25 | 51 | - |
| 52 | 6.26. Таблица 26 | 52 | - |
| 53 | 6.27. Таблица 27 | 53 | - |
| 54 | 6.28. Таблица 28 | 54 | - |
| 55 | 6.29. Таблица 29 | 55 | - |
| 56 | 6.30. Таблица 30 | 56 | - |
| 57 | 6.31. Таблица 31 | 57 | - |
| 58 | 6.32. Таблица 32 | 58 | - |
| 59 | 6.33. Таблица 33 | 59 | - |
| 60 | 6.34. Таблица 34 | 60 | - |
| 61 | 6.35. Таблица 35 | 61 | - |
| 62 | 6.36. Таблица 36 | 62 | - |
| 63 | 6.37. Таблица 37 | 63 | - |
| 64 | 6.38. Таблица 38 | 64 | - |
| 65 | 6.39. Таблица 39 | 65 | - |
| 66 | 6.40. Таблица 40 | 66 | - |
| 67 | 6.41. Таблица 41 | 67 | - |
| 68 | 6.42. Таблица 42 | 68 | - |
| 69 | 6.43. Таблица 43 | 69 | - |
| 70 | 6.44. Таблица 44 | 70 | - |
| 71 | 6.45. Таблица 45 | 71 | - |
| 72 | 6.46. Таблица 46 | 72 | - |
| 73 | 6.47. Таблица 47 | 73 | - |
| 74 | 6.48. Таблица 48 | 74 | - |
| 75 | 6.49. Таблица 49 | 75 | - |
| 76 | 6.50. Таблица 50 | 76 | - |
| 77 | 6.51. Таблица 51 | 77 | - |
| 78 | 6.52. Таблица 52 | 78 | - |
| 79 | 6.53. Таблица 53 | 79 | - |
| 80 | 6.54. Таблица 54 | 80 | - |
| 81 | 6.55. Таблица 55 | 81 | - |
| 82 | 6.56. Таблица 56 | 82 | - |
| 83 | 6.57. Таблица 57 | 83 | - |
| 84 | 6.58. Таблица 58 | 84 | - |
| 85 | 6.59. Таблица 59 | 85 | - |
| 86 | 6.60. Таблица 60 | 86 | - |
| 87 | 6.61. Таблица 61 | 87 | - |
| 88 | 6.62. Таблица 62 | 88 | - |
| 89 | 6.63. Таблица 63 | 89 | - |
| 90 | 6.64. Таблица 64 | 90 | - |
| 91 | 6.65. Таблица 65 | 91 | - |
| 92 | 6.66. Таблица 66 | 92 | - |
| 93 | 6.67. Таблица 67 | 93 | - |
| 94 | 6.68. Таблица 68 | 94 | - |
| 95 | 6.69. Таблица 69 | 95 | - |
| 96 | 6.70. Таблица 70 | 96 | - |
| 97 | 6.71. Таблица 71 | 97 | - |
| 98 | 6.72. Таблица 72 | 98 | - |
| 99 | 6.73. Таблица 73 | 99 | - |
| 100 | 6.74. Таблица 74 | 100 | - |

1. // : -
.- 2013. - 2 (78). - . 215–236.
2. // :
.- 2008. - 2. - . 151–174.
3. / .
.- : - , 2014. - 363 .
4. // . - 2014. - 11. - . 20–35.
5. // :
: , , . -
2008. - 3. - . 147–167.
6. *Willekens F., Rogers* . Spatial Population Analysis: Methods and Computer Programs. – Laxenburg: IIASA, 1978. – 302 p.

(,) – -
 , , .

(630090, , . , 17, e-mail:
soboleva@ieie.nsc.ru).

(,) – -
 .
(630090, , . ,
 , 17, e-mail: soboleva@ieie.nsc.ru).

(,) –
 .
(630090, , . ,
17, e-mail: soboleva@ieie.nsc.ru).

S.V. Soboleva, N.E. Smirnova, O.V. Chudaeva

THE DYNAMICS OF DEMOGRAPHIC RISKS IN SIBERIA: A MULTIREGIONAL ANALYSIS

The article discusses a methodological approach to analyzing the dynamics of the demographic situation with individual indicators from several territorial objects, which allow assessing each territory according to how tense its demographic situation is. To conduct this analysis, we have selected a few demographic threat factors showing the dynamics in all the regions of the Siberian Federal District against nationwide trends. An important part of the work is creating an integral index of demographic security (IIDS) based on the analyzed indicators, which may help to identify problem areas with low demographic security and relatively prosperous regions. Having compared the IIDS dynamics for all the subjects in the Siberian Federal District, we were the first to distinguish three groups of regions by their level of demographic security for the period of 1990–2012. The article shows that almost all regions with a low level of demographic security are located along the state border. The IIDS can be used in demographic policy-making at both regional and federal levels in order to decide on managerial actions on demographic security.

Keywords: reproduction of the population; depopulation; ageing of the population; demographic security; demographic threat indicators; integrated index of demographic security

The publication is prepared within the priority XI.179 (project No. XI.179.1.1) according to the research plan of the IEIE SB RAS

References

1. Grigoriev, Yu.A. & S.V. Soboleva. (2013). Sovremennoe sostoyanie reproduktivnogo zdorovya kak faktor sokrashcheniya rozhdaemosti naseleniya Sibiri [Repro-

ductive health as a factor of the reduced birth rates in Siberia]. Region: ekonomika i sotsiologiya [Region: Economics and Sociology], 2 (78), 215–236.

2. *Kazantsev, S.V.* (2008). Otsenka vzaimnogo polozheniya regionov [Comparative assessment of regional economies]. Region: ekonomika i sotsiologiya [Region: Economics and Sociology], 2, 151–174.

3. *Kuleshov, V.V.* (Ed.) (2014). Perspektivy i riski razvitiya chelovecheskogo potentsiala v Sibiri [Prospects and Risks of Human Resource Development in Siberia]. Novosibirsk, SB RAS Publ., 363.

4. *Soboleva, S.V., N.E. Smirnova & O.V. Chudaeva.* (2014). Osobennosti formirovaniya naseleniya prigranichnykh territoriy Sibiri [Features of population formation of Siberian border territories]. EKO, 11, 20–35.

5. *Soboleva, S.V. & O.V. Chudaeva.* (2008). Demograficheskaya bezopasnost Rossii i ee regionov: faktory, problemy, indikatory [Demographic safety in Russia and its regions: factors, problems and indicators]. Region: ekonomika i sotsiologiya [Region: Economics and Sociology], 3, 147–167.

6. *Willekens, F. & . Rogers.* (1978). Spatial Population Analysis: Methods and Computer Programs. Laxenburg, IIASA, 302.

Information about the authors

Soboleva, Svetlana Vladimirovna (Novosibirsk, Russia) – Doctor of Sciences (Economics), Professor, Chief Researcher at the Institute of Economics and Industrial Engineering, Siberian Branch of the Russian Academy of Sciences (17, Ac. Lavrentiev av., Novosibirsk, 630090, Russia, e-mail: soboleva@ieie.nsc.ru).

Smirnova, Natalia Evstafievna (Novosibirsk, Russia) – Researcher at the Institute of Economics and Industrial Engineering, Siberian Branch of the Russian Academy of Sciences (17, Ac. Lavrentiev av., Novosibirsk, 630090, e-mail: soboleva@ieie.nsc.ru).

Chudaeva, Olga Vladimirovna (Novosibirsk, Russia) – Researcher at the Institute of Economics and Industrial Engineering, Siberian Branch of the Russian Academy of Sciences (17, Ac. Lavrentiev av., Novosibirsk, 630090, e-mail: soboleva@ieie.nsc.ru).

16.05.2016 .

©, 2016

, — ,
 , —
 .
 , ,
 ,
 , —
 .
 , ,
 [5; 13; 14].
 [1; 3; 6;
 10].
 «
 ,
 » [7, . 28].
 « » «
 », « »
 » [8, . 65–66],
 ,
 (., , [2; 4; 11; 12],
 ,
 , ,
 . 90% —
 .
 .
 ,
 ,
 .
 (1990 2015 . 157 . .)

278 (.).

,

.

,

1.

135%) 1970–1980- (XXI . (2002–2010 .)

,

,

1989 .

, 2002 . – , 2010 .

2010 . 1979 .

84,2 68,9%.

(15,2 21,5%).

1990-

$$\begin{matrix} 1 & & \\ & \ddots & \\ & & \ddots \end{matrix}$$

4. — . 116–132.

, -
 -
 , -
 . -
 -
 , -
 . -
 , -
 . -
 (, -
 ,)².
 -
 .
 ,
 «
 ()».
 : « “ ”?».
 15 ,
 .
 « , » 71,6%
 . ,
 2 : « »
 1993 . (N = 513); « . » 1994 . (N = 4346)
 2005 . (N = 1316) ; «
 » 2008 .
 (N = 468); « » 2010 .
 (N = 796); « ()» 2011 . (N = 1982).

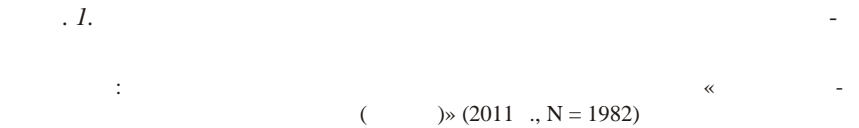
$$).$$

(47,6%),

(41,4%)

<<

>>



I

| , % | | | | | | | |
|--------|------|-------|-------|-------|-------|-------|-------|
| | | | | | | | |
| | 19 | 20–24 | 25–29 | 30–34 | 35–39 | 40–44 | 45–49 |
| 1994 | 78,8 | 81,6 | 84,3 | 86,1 | 81,9 | 85,8 | 82,5 |
| 2005 | 66,7 | 85,3 | 82,3 | 74,2 | 82,5 | 79,7 | 70,6 |
| 2011 | 59,4 | 62,1 | 58,6 | 56,0 | 46,2 | 44,5 | 42,1 |
| (,): | | | | | | | |
| 1994 | 77,5 | 84,9 | 84,9 | 87,5 | 86,4 | 83,7 | 74,6 |
| 2005 | 66,7 | 81,7 | 86,9 | 84,0 | 82,5 | 83,3 | 76,7 |
| 2011 | 78,1 | 78,6 | 79,3 | 75,9 | 69,7 | 77,3 | 69,4 |
| 1994 | 59,4 | 59,0 | 54,1 | 52,6 | 51,1 | 53,1 | 48,6 |
| 2005 | 50,0 | 55,0 | 46,0 | 47,4 | 44,3 | 49,5 | 51,1 |
| 2011 | 37,5 | 39,8 | 48,3 | 37,9 | 45,4 | 52,3 | 48,8 |
| 1994 | 43,1 | 57,9 | 59,2 | 55,3 | 60,8 | 59,4 | 58,0 |
| 2005 | 16,7 | 36,7 | 43,9 | 45,4 | 38,7 | 39,6 | 46,7 |
| 2011 | 37,5 | 41,7 | 46,9 | 49,1 | 48,7 | 56,3 | 43,8 |

N = 1316), « (1994 ., N = 4346; 2005 ., N = 1316), « (2011 ., N = 1982).

30–39- » 1994 .

| . . . , . . . | | |
|---------------|----------|---------|
| , | , | . |
| | , | , |
| | , | , |
| , | , | - |
| , | . | , |
| | | - |
| | : « | ?». |
| (32,7%) | , | , |
| | , | - |
| 32,2% | | ; |
| . | | - |
| | , | - |
| | 21,6% | . |
| | | , |
| | , | , |
| | | - |
| — | - | - |
| | . | |
| 2010 . | (91,8% |), - |
| , | (75,1%), | (74,8%) |
| (72,8%). | | |
| | . | - |
| | , | - |
| . | . | - |
| » | (4,9 | « |
| |). | - |
| | . | - |
| , | , | . |
| | , | - |
| 4,2 | , | - |
| | — 4,3, | |

. , , , -
 . -
 , -
 , , -
 , , -
 . , [9], -
 , , -
 .
 . (25%) -
 , , 15% -
 . -
 — -
 . -
 , -
 (,), , -
 (, , -
 ,), , -
 , . -
 , , , -
 :
 4,5 4,2 . , -
 ,
 (4,6). ,

«
».

87,2%
82,7%.

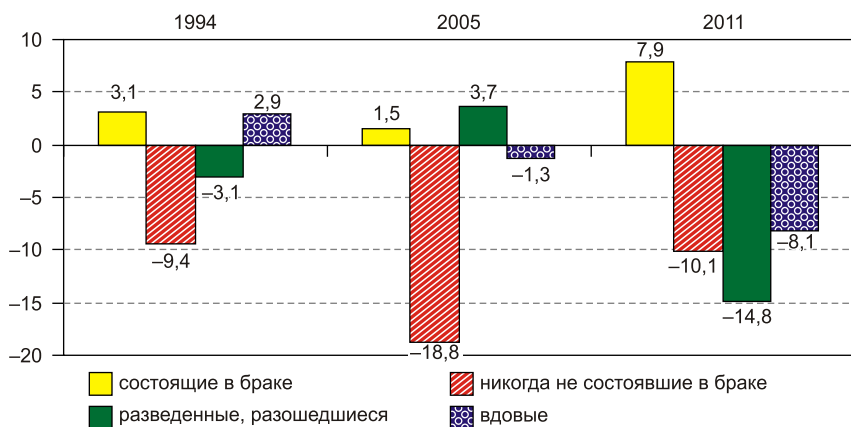
1994 .
2005 . – 83,5, 2011 . –
: 74,7, 63,2 64,7%
(
)
().

(
)

1994 .
9,4%
2005 .
18,8% (. 3).
2011 .
(–14,8%).

«
» (2008 .).

80%
(73,1%)



. 3.

, %

: « . . » (1994 ., N = 4346; 2005 ., N = 1316), « () » (2011 ., N = 1982)

. -

. -

, : 4,70,

4,68 4,56 . -

. -

(- 4,2 , - 3,9),

(3,9 3,6), , -

(3,8 3,2), (3,8

3,3). «

, » « , -

» -

(. 2). -

, ,

[7]. -

| 5- , % | | | | | | |
|--------|------|-----|------|------|------|------|
| | * | | | | | |
| | 1 | 2 | 3 | 4 | 5 | |
| | 1,5 | 1,9 | 3,4 | 8,6 | 75,2 | 9,4 |
| | 0,9 | 1,7 | 4,1 | 12,8 | 73,1 | 7,5 |
| - | 3,0 | 1,7 | 4,1 | 14,3 | 67,5 | 9,4 |
| , | 1,9 | 1,3 | 9,8 | 15,2 | 56,0 | 15,8 |
| , | 10,3 | 5,1 | 9,8 | 11,5 | 50,4 | 12,8 |
| , | | | | | | |
| - | 4,5 | 2,6 | 10,0 | 22,4 | 50,0 | 10,5 |
| | 3,4 | 3,9 | 13,3 | 23,1 | 39,1 | 17,3 |
| | 12,6 | 5,3 | 15,2 | 10,7 | 37,0 | 19,2 |
| | 5,1 | 7,1 | 20,1 | 19,9 | 30,1 | 17,7 |
| | 13,5 | 9,0 | 16,5 | 15,0 | 28,6 | 17,5 |
| , | | | | | | |
| - | 15,6 | 6,6 | 18,2 | 13,3 | 26,3 | 20,1 |

* 1 – ; 2 – ; 3 – ; 4 – ; 5 – .
: «
» (2008 ., N = 468).

(I), – (II)
(III).

,
:
, , ,
.
I 4,1 .
-
,

II 4,3 . , , -

, -

, , -

, , -

. -

, -

, « , » . -

III 4,0 . ,

, -

. « -

» -

4,4 3,5 (.3). -

, -

4,9 4,3. , -

, -

, — 1,2, 1,1, 0,9 -

, -

« » . -

, -

(II). « -

» « ±0,2 . -

« », -

, -

, -

(III), . -

, (±0,7). -

« , , ,

| (5-) | | | | | | |
|---------|-----|-----|-----|-----|-----|-----|
| | | | | | | |
| | | | | | | |
| — (I): | — | | | | | 4,1 |
| , | 4,4 | 3,5 | 3,7 | 4,0 | 3,5 | 4,0 |
| | 4,8 | 4,7 | 4,8 | 4,9 | 4,3 | 4,7 |
| | 3,9 | 3,8 | 3,3 | 2,8 | 3,3 | 3,7 |
| — (II): | — | | | | | 4,3 |
| | 4,6 | 4,5 | 4,7 | 4,6 | 4,5 | 4,6 |
| | 4,7 | 4,7 | 4,6 | 4,8 | 4,6 | 4,7 |
| | 3,5 | 3,4 | 3,3 | 4,0 | 3,4 | 3,4 |
| (III): | | | | | | 4,0 |
| , | 4,3 | 4,1 | 4,3 | 3,9 | 4,2 | 4,2 |
| , | 4,5 | 4,5 | 4,5 | 4,2 | 4,4 | 4,5 |
| | 4,1 | 4,1 | 4,2 | 4,3 | 4,1 | 4,1 |
| | 3,7 | 3,6 | 3,9 | 4,3 | 3,8 | 3,8 |
| , | | | | | | |
| , | 3,4 | 3,1 | 3,1 | 2,9 | 3,8 | 3,4 |

: « -
» (2008 ., N = 468).

1. //
2. . – 2002. – 2. – . 50–61.
3. (.)// (.)/ – : « », 2004. – . 23–31.
4. // – 2006. – 11. – . 61–73.
5. / (.): : , 1994. – 72 .
6. : // – 2005. – 3 (24). – . 124–140.
7. // – 2003. – 7. – . 92–100.
8. // – 2010. – 1. – . 28–36.
9. A.A. : – 2004. – 5. – . 65–73.
10. // – 2004. – 4. – . 5–18.
11. : (.) . – : , 1998. – 207 .
12. : : , 2003. – 200 .

13. *Lestaeghe R., Van de Kaa D.J.* Twee Demografische Transitities? (Two Demographic Transitions?) // *Bevolking: Groei en Krimp* (Population: Growth and Decline). – 1986. – P. 9–24.

14. *Van de Kaa D.J.* Europe's second demographic transition // *Population Bulletin*. – 1987. – Vol. 42. – P. 1–59.

С. А. Сукнева, А. С. Барашкова
(677891, Якутск, Республика Саха (Якутия), ул. Мухоморова, д. 2, e-mail: sukneva@mail.ru).
А. С. Барашкова, С. А. Сукнева
(677891, Якутск, Республика Саха (Якутия), ул. Мухоморова, д. 2, e-mail: asbarashkova52@mail.ru).

DOI: 10.15372/REG20160305

Region: Economics & Sociology, 2016, No. 3 (91), p. 98–117

S.A. Sukneva, A.S. Barashkova

FAMILY AND CHILDREN IN THE SYSTEM OF LIFE VALUES OF THE YAKUT POPULATION

This article analyses the changing place of family and children in life value priorities of the population of the Republic of Sakha (Yakutia). Our research hypothesis is that the persistent significance of family in the scale of life values is determined by the evolving family structure and completeness and increasing child-centrism. The article is based on the six sociological surveys conducted between 1993 and 2011 in the Republic of Sakha (Yakutia). Such a long research period allowed us to trace the transformation of axiological views of the Yakuts on the value and importance of families and children in their lives. The classification of life values developed by the authors shows how significant

each of the three designated groups is for confirming the hypothesis about the preservation of the traditional family lifestyle. We discover the differentiations of respondents' opinions on the competition between the values of family, socio-labor and personal orientations depending on the age, marital and social status of the survey participants. The main conclusion is that the family retains its priority in the lives of the Yakut population with an explicit child-centric orientation. For some young people social, labor, and personal orientations have little or no association with the family. There is a concern about their views on the existing forms of marriage, the relationship and obligations of spouses, and the desire to preserve their freedom.

Keywords: the Republic of Sakha (Yakutia); life values; family; children; family composition; opinion poll

The publication is prepared within the Government Order issued by the Ministry of Education and Sciences of the Russian Federation (project No. 01201460077)

References

1. Arkhangel'skiy, V.N. (2002). Vzaimootnosheniya v sovremennoy rossiyskoy semye [Relationships in a modern Russian family]. Narodonaselenie [Population], 2, 50–61.
2. Bravina, R.I., A.B. Yefimova & B.N. Popov (Ed.). (2004). Tsennosti semyi i braka u studencheskoy molodezhi (po dannym sotsiologicheskogo issledovaniya) [Students' values of family and marriage (according to social research)]. Sovremennyye problemy brachnosti i razvodimosti v Respublike Sakha (Yakutiya) [Current Problems of Marriage and Divorce Rates in the Republic of Sakha (Yakutia)]. Yakutsk, Yakutsk Branch of SB RAS Publishing House, 23–31.
3. Varlamova, S.N., A.V. Noskova & N.N. Sedova. (2006). Semya i deti v zhiznennykh ustanovkakh rossiyan [Family and children in life attitudes of Russians]. Sotsiologicheskie issledovaniya [Sociological Studies], 11, 61–73.
4. Vinokurova, T.Z., A.I. Shurgina, G.A. Zheleznova et al. (1994). Demograficheskaya situatsiya v Respublike Sakha (Yakutiya): problemy i perspektivy [Demographic Situation in the Republic of Sakha (Yakutia)]. Yakutsk, YSC SB RAS Publ., 72.
5. Zakharov, S. (2005). Perspektivy rozhdaemosti v Rossii: vtoroy demograficheskiy perekhod [Birth rate prospects in Russia: second demographic transition]. Otechestvennye zapiski [Domestic Notes], 3 (24), 124–140.
6. Kartseva, L.V. (2003). Model semyi v usloviyakh transformatsii rossiyskogo obshchestva [Family model in the conditions of the Russian society transformation]. Sotsiologicheskie issledovaniya [Sociological Studies], 7, 92–100.

7. *Lapin, N.I.* (2010). Funktsionalno-orientiruyushchie klasterly bazovykh tsennostey naseleniya Rossii i ee regionov [Functional orienting clusters of basic values of Russian citizens and regions]. *Sotsiologicheskie issledovaniya* [Sociological Studies], 1, 28–36.

8. *Mitrikas, A.A.* (2004). Semya kak tsennost: sostoyaniye i perspektivy tsennostnogo vybora v stranakh Yevropy [The family as a value: status and prospects of the value choice in Europe]. *Sotsiologicheskie issledovaniya* [Sociological Studies], 5, 65–73.

9. *Popov, B.N., V.B. Popov & M.K. Pankratova* (Ed.). (1988). Sovremennyye problemnyye situatsii pri sozdaniy semyi [Modern problematic situations when starting a family]. *Semya u narodov Severo-Vostoka SSSR* [Family for the peoples of the north-eastern USSR]. Yakutsk, YSC SB AS USSR Publ., 51–65.

10. *Rimashevskaya, N.M.* (2004). Semya v stranakh s perekhodnoy ekonomikoy [Family in countries with transitional economy]. *Narodonaseleniye* [Population], 4, 5–18.

11. *Fedorova, Ye.N.* (1998). Naseleniye Yakutii: proshloe i nastoyashchee (geo-demograficheskoye issledovaniye) [Population of Yakutia: Past and Present (geo-demographic study)]. Novosibirsk, Nauka Publ., 207.

12. *Fedorova, Ye.N. & G.A. Zheleznova.* (2003). Migratsiya naseleniya Yakutii: proshloe i nastoyashchee [Migration of the Population of Yakutia: Past and Present]. Novosibirsk, Nauka Publ., 200.

13. *Lestaege, R. & D.J. Van de Kaa.* (1986). Twee Demografische Transitie's? (Two Demographic Transitions?) Bevolking: Groei en Krimp (Population: Growth and Decline), 9–24.

14. *Van de Kaa, D.J.* (1987). Europe's second demographic transition. *Population Bulletin*, 42, 1–59.

Information about the authors

Sukneva, Svetlana Aleksandrovna (Yakutsk, Russia) – Doctor of Sciences (Economics), Chief Researcher at the Scientific-Research Institute of Regional Economy of the North, North-Eastern Federal University in Yakutsk (2, Petrovsky st., Yakutsk, 677891, Russia, e-mail: sukneva@mail.ru).

Barashkova, Anastasiya Spiridonovna (Yakutsk, Russia) – Candidate of Sciences (Economics), Leading Researcher at the Scientific-Research Institute of Regional Economy of the North, North-Eastern Federal University in Yakutsk (2, Petrovsky st., Yakutsk, 677891, Russia, e-mail: asbarashkova52@mail.ru).

25.01.2016 .

©, 2016

[1]. , , -
, , -
, [4].
-
, . -
, , -
, , -
, [2]. -
: -
• , -
, ; -
• , [7]; -
• , ;
• ;
• ;
• . -
. -
, , -
, (, -
[3]), [5; 6].
.

,
 .
 -
 ,
 .
 -
 .
 « »
 ,
 -
 ,
 -
 ,
 -
 .
 (-)
 :
 , ,
 ,
 .
 :
 :
 ,
 ,
 ,
 :
 ;
 ;
 (Q)
 (P)
 (I),
 (T)

$Q=f(C;T;P;I),$

$f-$, Q

$, T, P, I.$

2015 .

,

, 18 .

,

,

.

, 1202 .

46% - , 75%

, 62% 38% - ,

72% - 26 45 .

, -

5%. :

(); ;

; , ; .

,

,

.

,

,

(),

,

0,47.

,

,

;

(

);

;

(

);

(

).

0,62,

-0,76,

-0,74.

-2,97

5.

3,64

,

- 4,12

.

,

:

,

3,5

.

- 3,9

:

;

;

;

0,59.

«

» «

» - 2,5

.

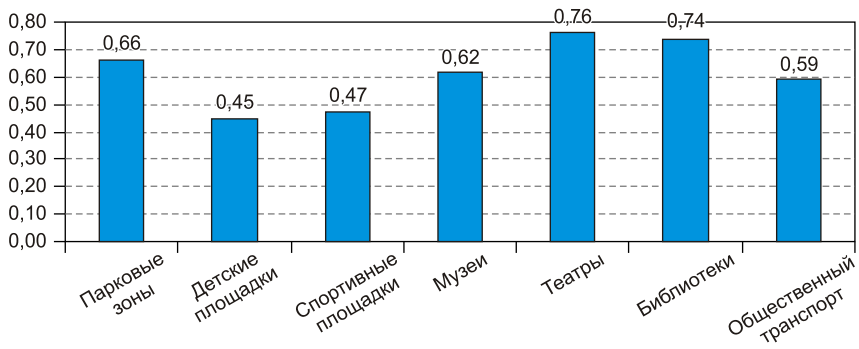
3,32

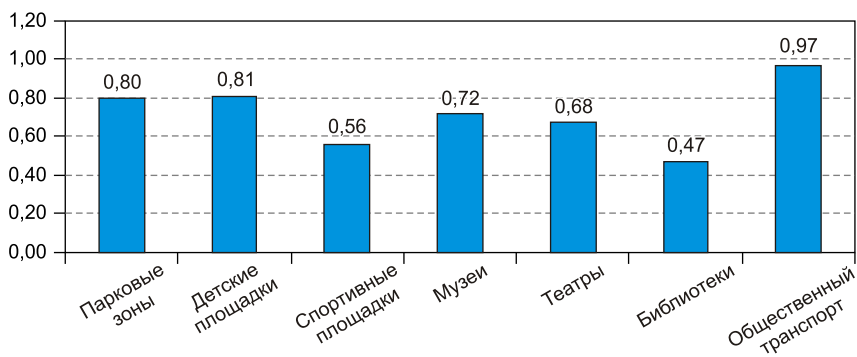
.

()

. 1.

,





. 2.

()

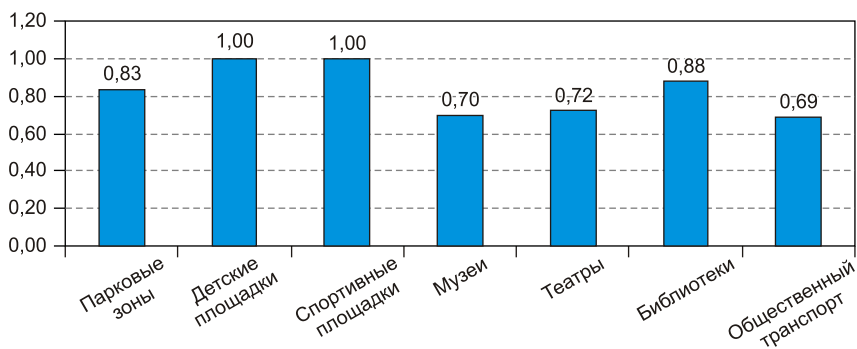
$$P = \frac{x_i}{x_{\max}}$$

x_i — ;
 x_{\max} — ;

, $P = 1$.

1.

. 3.



. 3.

$$Q = b_1 C + b_2 T + b_3 P,$$

b_1, b_2, b_3 –

$$Q = I (b_1 C + b_2 T + b_3 P).$$

();

$b_1 = 0,5 \quad b_2 = 0,5.$
 ,
 . 1 -
 . :

$b_1 = 0,4, b_2 = 0,4, b_3 = 0,2 (\quad . 2).$
 . 0,75.
 , -
 , -
 , ,
 ,
 (), -
 , . -
 . -
 - -
 , -
 I

(.)

| | | | Q |
|----------|------|------|------|
| () | 0,66 | 0,80 | 0,73 |
| | 0,45 | 0,81 | 0,63 |
| | 0,47 | 0,56 | 0,52 |

2

(.)

| - | C | T | P | Q |
|---|------|------|------|------|
| | 0,62 | 0,72 | 0,70 | 0,68 |
| | 0,76 | 0,68 | 0,72 | 0,72 |
| | 0,74 | 0,47 | 0,88 | 0,66 |

. . . , . . . , . . . , . . .
 ,
 -
 -
 ,
 .
 (14-06-00024)
 1. . . : . -
 ∴ , 2015. – 119 .
 2. . . : -
 . - ∴ , 2004. – 319 .
 3. . - ∴ , 1985. -
 . 1. – 512 .
 4. // -
 . – 2007. – 10. – С. 90–113.
 5. . - ∴ - .
 - ; - , 1997. – 720 .
 6. : -
 . - ∴ , 1995. – 276 .
 7. Arrow K. Social Choice and Individual Values. – N.Y.: Wiley, 1951. – 144 .
 8. Levinson A. Valuing public goods using happiness data: the case of air quality // Journal of Public Economics. – 2012. – Vol. 96 (9). – P. 869–880.
 9. Samuelson P.A. The pure theory of public expenditure // The Review of Economics and Statistics. – 1954. – Vol. 36, No. 4. – P. 387–389.
 (,) – -
 ,
 (620014, , . , 29,
 e-mail: epopov@mail.ru).
 (,) – -
 ,
 (620014, , . -
 29, e-mail: irina_katz@mail.ru).
 (,) – -
 , .

(620014, , . -
, 29, e-mail: vay_uiec@mail.ru). (,) – -
(620014, ,
, 29, e-mail: sevastianova89@yandex.ru).

DOI: 10.15372/REG20160306

Region: Economics & Sociology, 2016, No. 3 (91), p. 118–132

Ye.V. Popov, I.S. Kats, A.Yu. Veretennikova, Ye.A. Sevastyanova

EVALUATING THE QUALITY OF LOCAL PUBLIC GOODS

The article reveals that both theoretical and practical aspects of public goods quality evaluation are insufficiently covered in scientific papers. The authors identify two types of public goods assessment: regulatory and consumer. Here we present a procedure for the consumer evaluation of public goods which considers their proximity and price affordability. The article presents the results of an empirical research on mixed public goods and their consumer evaluation, conducted in Yekaterinburg. The research determined the actual and desired frequency of public goods use. We have compiled a list of public goods that require additional funding and regulation. Our findings can be used in Yekaterinburg social policy development.

Keywords: public goods sector; consumer evaluation; regulatory assessment

*The publication is prepared within the framework of the project
No. 14-06-00024 supported by funding from the Russian Foundation
for Basic Research*

References

1. Dubynina, A.V. (2015). *Ekonomika obshchestvennogo sektora: v voprosakh i otvetakh* [Economics of the Public Sector: Questions and Answers]. Moscow, Finansy i statistika Publ., 119.
2. Yelifеров, V.G. & V.V. Repin. (2004). *Biznes-protsessy: reglamentatsiya i upravleniye* [Business processes: regulations and management]. Moscow, Infra-M Publ., 319.
3. Pigou, A. (1985). *Ekonomicheskaya teoriya blagosostoyaniya* [The Economics of Welfare]. Moscow, Progress Publ., Vol. 1, 512.

-
4. *Rubinstein, A.* (2007). Obshchestvennye interesy i teoriya publichnykh blag [Public interests and the theory of public goods]. *Voprosy ekonomiki* [Problems of Economics], 10, 90–113.
 5. *Stiglitz, J.* (1997). *Ekonomika gosudarstvennogo sektora* [Economics of the Public Sector]. Moscow, MSU Publ., INFRA-M Publ., 720.
 6. *Yakobson, L.I.* (1995). *Ekonomika obshchestvennogo sektora. Osnovy teorii gosudarstvennykh finansov* [Economics of the Public Sector. The Foundations of Government Finance]. Moscow, Nauka Publ., 276.
 7. *Arrow, K.* (1951). *Social Choice and Individual Values*. New York, Wiley Publ., 144.
 8. *Levinson, A.* (2012). Valuing public goods using happiness data: the case of air quality. *Journal of Public Economics*, 96 (9), 869–880.
 9. *Samuelson, P.A.* (1954). The pure theory of public expenditure. *The Review of Economics and Statistics*, Vol. 36, No. 4, 387–389.

Information about the authors

Popov, Yevgeniy Vasilievich (Yekaterinburg, Russia) – Corresponding Member of the RAS, Head of Economic Theory Centre of the Institute of Economics, Ural Branch of the Russian Academy of Sciences (29, Moskovskaya st., Yekaterinburg, 620014, Russia, e-mail: epopov@mail.ru).

Kats, Irina Semenovna (Yekaterinburg, Russia) – Candidate of Sciences (Economics), Researcher at Economic Theory Centre of the Institute of Economics, Ural Branch of the Russian Academy of Sciences (29, Moskovskaya st., Yekaterinburg, 620014, Russia, e-mail: irina_katz@mail.ru).

Veretennikova, Anna Yurievna (Yekaterinburg, Russia) – Candidate of Sciences (Economics), Researcher at Economic Theory Centre of the Institute of Economics, Ural Branch of the Russian Academy of Sciences (29, Moskovskaya st., Yekaterinburg, 620014, Russia, e-mail: vay_uiec@mail.ru).

Sevastyanova, Yevgeniya Anatolievna (Yekaterinburg, Russia) – post-graduate student at the Institute of Economics, Ural Branch of the Russian Academy of Sciences (29, Moskovskaya st., Yekaterinburg, 620014, Russia, e-mail: sevastianova89@yandex.ru).

16.05.2016 .

323.1:316.4(571.56)

: , 2016, 3 (91), . 133–142

• • , • •

« »

,
-

« ». ,

•
•

•

: , « », -
, ,

« » —

—
•
-
•

283 . (2011 .).
11,7 . ., —

3,6 . .

[2; 4; 5], ,

« » (1),
() « » () « », « -
», « - », -
« », « » (2),
« ».

« »

,

,

.

,

,

,

,

,

,

(), «

“ ”

.

30–40 » [3].

1.

1 .:

() «

« ». – URL: http://old.sakha.gov.ru/special/sites/default/files/doc/2015_11/6/1383-%D1%80.pdf.

| | | |
|---|--------|---|
| | ， | - |
| | ， | - |
| ， | | - |
| | ， | - |
| | ， | - |
| | ， | - |
| ， | - | - |
| ， | | - |
| · | | - |
| | ， | - |
| | · | - |
| | | - |
| | ： | - |
| | · | - |
| ， | | - |
| | ， | - |
| | ， | - |
| | · | - |
| ， | | - |
| | ， | - |
| · | | - |
| | | - |
| | - | - |
| | | - |
| | () | - |
| · | 2010 · | « |
| | | - |
| | ()». | - |
| ， | | - |
| | · | - |
| | | - |
| | | - |
| ， | | - |

-
-
-
-,
,
-
-
-
-
-
-
-
-
-
-
-
-
-

1. . . .
(). – URL: <http://cheloveknauka.com/etnicheskie-i-etnokulturnye-protsessy-v-respublike-saha-yakutiya#ixzz4AJiZDgiY> (11.04.2016).
2. . . . « »? – URL: <http://yakutia.info/article/165717> (11.01.2016).
3. . . . –
() // : /
. . . . – : « –
()», 2015. – . 200–208.
4. . . . « »:
// : . – 2016. –
2 (90). – . 154–164.
5. . . .
« » –
// : –
. – 2016. – 2 (90). – . 165–180.

() –
 ,
 (677980, , . -
 , 2, e-mail: a.a.pakhomov@prez.ysn.ru).
 () –
 ,
 (677980,
 , 2, e-mail: mostakhovats@mail.ru).

DOI: 10.15372/REG20160307

Region: Economics & Sociology, 2016, No. 3 (91), p. 133–142

A.A. Pakhomov, T.S. Mostakhova

THE ETHNIC AND SOCIAL PROBLEMS OF YAKUT TERRITORIES IN THE POWER OF SIBERIA PIPELINE CONSTRUCTION AREA

The paper presents the ethnic and social characteristics of Yakut territories within the area affected by the Power of Siberia cross-border gas pipeline. The construction of the pipeline will have a multidirectional social impact on the regions inhabited by indigenous peoples of the North. We reveal the results of an ethnological expert review on the pipeline construction and outline the main problems emerging from the influence that industrial projects exert over the ethnic and social development of territories.

Keywords: Yakutia; the Power of Siberia pipeline; indigenous small numbered peoples of the North; ethnic and social development; ethnological expert review

References

1. *Bragina, D.G.* (2003). Etnicheskie i etnokulturnye protsessy v Respublike Sakha (Yakutiya) [Ethnic and ethno-cultural processes in the Republic of Sakha (Yakutia)].

Available at: <http://cheloveknauka.com/etnicheskie-i-etnokulturnye-protsessy-v-respublike-saha-yakutiya#ixzz4AJiZDgiY> (date of access: 11.04.2016).

2. *Yefremov, T.* (2014). Chem vygodna Yakutii «Sila Sibiri»? [What does Yakutia get from Power of Siberia?]. Available at: <http://yakutia.info/article/165717> (date of access: 11.01.2016).

3. *Kalashnikov, V.V. & V.I. Kondratyeva* (Ed.). (2015). Mineralno-syryevoy potentsial arkticheskikh rayonov Respubliki Sakha (Yakutiya) [Mineral and raw materials potential of Arctic regions in the Republic of Sakha (Yakutia)]. Arktika: perspektivy ustoychivogo razvitiya [The Arctic: Prospects for Sustainable Development]. Yakutsk, State Autonomous Agency Center for Strategic Research of the Republic of Sakha (Yakutia), 200–208.

4. *Kin, A.A.* (2016). Magistralnyy truboprovod «Sila Sibiri»: osnovnye polozheniya krupnomasshtabnogo proekta [The Power of Siberia pipeline: fundamentals of the large-scale project]. Region: ekonomika i sotsiologiya [Region: Economics and Sociology], 2 (90), 154–164.

5. *Sysoeva, N.M. & A.N. Kuznetsova.* (2016). Vliyanie gazoprovoda Sila Sibiri na razvitie prilegayushchikh territoriy Irkutskoy oblasti [Influence of the Power of Siberia cross-border pipeline on the surrounding area]. Region: ekonomika i sotsiologiya [Region: Economics and Sociology], 2 (90), 165–180.

Information about the authors

Pakhomov, Aleksandr Alekseyevich (Yakutsk, Russia) – Doctor of Sciences (Economics), Head of the Department of Regional Economic and Social Research, Yakut Scientific Center, Siberian Branch of the Russian Academy of Sciences (2, Petrovskiy st., Yakutsk, 677980, Russia, e-mail: a.a.pakhomov@prez.ysn.ru).

Mostakhova, Tatyana Semenovna (Yakutsk, Russia) – Doctor of Sciences (Economics), Leading Researcher at the Department of Regional Economic and Social Research, Yakut Scientific Center, Siberian Branch of the Russian Academy of Sciences (2, Petrovskiy st., Yakutsk, 677980, Russia, e-mail: mostakhovats@mail.ru).

06.06.2016 .

© , 2016

: , 2016, 3 (91), . 143–161

<<

) - . -

[4]. -

« »

74 . . 75% -

,

2014 . « -

»

() -

,

-

- 60 23 . -

(. 1).

I

| | - | | | | | |
|--------|-----------|-----------|------|-----------|-----------|------|
| | | - | | () - | - | |
| , , - | 8 | 15 | 23 | 60 | 30* | - |
| , . ** | 3,4 | 7,0 | 10,4 | 11,5 | 35,0 | 46,5 |
| | 2016–2020 | 2025–2030 | - | 2016–2025 | 2016–2028 | - |
| 2016 . | 2024–2026 | - | - | 2023–2025 | 2017–2022 | - |

* , .

** 2014 .

2015–2030 ., %

| | 100,0 | 100,0 |
|-----|-------|-------|
| | 69,8 | 53,2 |
| : | | |
| | 32,3 | 26,7 |
| | 37,5 | 26,5 |
| | 30,2 | 47,8 |
| : | | |
| () | 24,8 | 19,6 |
| | 2,8 | 7,6 |
| | 2,6 | 19,6 |

56% –

, 44% – . – -
-
2015–2030 . – 87 . -

(. 3).

- -
-
-

. ,

60% 1,5 . ,
2014 ., -
12%. -

-

.

➤ 4 -
 -
 .
 « -
 » « ».
 « »
 « -
 », -
 . -
 -
 -
 -
 , -
 , .
 ,
 18%. 0%
 , - 10%, - 18%.
 7,6%⁵.
 « »
 4 -
 5 :
 . - URL: <http://blagoveshensk.bezformata.ru/listnews/pribil-dlya-rezidentov-tor/47072749>;
 . - URL: <http://www.amur.info/news/2016/05/18/111193>.

.
 -
 .
 -
 -
 -
 -
 ()
 : - , , .
 , « ».
 « », -
 [3]. -
 2016 .: 56 .(
 2015 . 30%).
 .
 2010–2015 .⁶
 ,
 ,
 ,
 -
 -
 .
 -
 . 1960-
 . , -
 6 .: « » –
 . – URL: <http://quote.rbc.ru/addition/article/562949992659438/> .

, -
 , -
 , , -
 -
 .
 . « » .
 « »
 : « »
 . -
 « » .
 2020 .,
 « » 700 . -
 40%.
 — « » -
 - , -
 - 2030 .
 « », -
 — ,
 .
 « », , -
 .
 -
 -
 , -
 ,
 .

-

| | |
|--|---|
| | |
| <div>-</div> <div>-</div> <div>().</div> <div>-</div> <div>-</div> | <div>-</div> <div>.</div> <div>,</div> <div>,</div> <div>-</div> |
| <div>-</div> <div>-</div> <div>.</div> <div>.</div> <div>,</div> <div>.</div> <div>(10–15)</div> | <div>.</div> <div>-</div> <div>-</div> <div>— « »</div> <div>:</div> <div>-</div> <div>-</div> <div>,</div> <div>,</div> <div>.</div> <div>.</div> <div>,</div> <div>.</div> <div>.</div> <div>.</div> <div>.</div> <div>.</div> <div>-</div> |

« , » 62,9% « » (-BP
) , 50% « - » () ,
 , « » .

156

XI.174 (XI.174.1.3).
0325-2014-00019

1. . -
// . – 2016. – 11. – . 20–25.
2. . . « »:
// : . – 2016. –
2 (90). – . 154–164.
3. . . . « » -
// : -
. – 2016. – 2 (90). – . 165–180.
4. : -
// « »: . – 2014. – 10. – URL:
<http://www.gazprom.ru/press/reports/2014/eastern-vector/> (25.09.2014).

(,) – -
 , -
(630090, -
 , 17, e-mail:
pliaskina@hotmail.com),
(630090, -
 , . , 7).
(,) – -
 , , . -
(630090, , . , 17, e-mail:
kharit@ieie.nsc.ru).
(,) – -
 .
(630090, , . . -
 , 17, e-mail: vira@ieie.nsc.ru).

Region: Economics & Sociology, 2016, No. 3 (91), p. 143–161

N.I. Plyaskina, V.N. Kharitonova, I.A. Vizhina

REGIONAL ASSISTANCE IN CREATING GAS-CHEMICAL CLUSTERS IN AMUR AND IRKUTSK OBLASTS

The article offers a comprehensive analysis of expected effects and gains for regions from building petrochemical clusters in conjunction with the development strategies of mining companies within the East Siberian oil and gas complex (ESOGC) megaproject. The ESOGC megaproject is a tool for studying the commercial performance of companies' investment projects, state and regional tax revenues, and the balance of strategic investment intentions of Gazprom and SIBUR in the exploration of hydrocarbon deposits in Eastern Siberia and the Republic of Sakha (Yakutia). We examine the Amur and Irkutsk Oblast practices making a regional policy aimed at locating expected effects and benefits, as well as in working out organizational and managerial solutions for the implementation of gas-chemical projects of SIBUR and Gazprom.

Keywords: megaproject; the East Siberian oil and gas complex; the Power of Siberia pipeline; region; alignment of interest; regional effects; public support; investment program

The publication is prepared within the priority XI.174 (project No. XI.174.1.3) according to the research plan of IEIE SB RAS

References

1. Andrianov, V. (2016). Neftegazokhimiya Vostochnoy Sibiri: na razvalinakh vozdushnykh zamkov [Oil and gas chemistry in Eastern Siberia: on the ruins of cloud-castles]. Neftegazovaya vertical [Oil and Gas Vertical], 11, 20–25.

2. *Kin, A.A.* (2016). Magistralnyy truboprovod «Sila Sibiri»: osnovnye polozheniya krupnomasshtabnogo proekta [The Power of Siberia pipeline: fundamentals of the large-scale project]. *Region: ekonomika i sotsiologiya* [Region: Economics and Sociology], 2 (90), 154–164.

3. *Sysoeva, N.M. & A.N. Kuznetsova.* (2016). Vliyanie gazoprovoda Sila Sibiri na razvitie prilgayushchikh territoriy Irkutskoy oblasti [Influence of the Power of Siberia cross-border pipeline on the surrounding area]. *Region: ekonomika i sotsiologiya* [Region: Economics and Sociology], 2 (90), 165–180.

4. *Timoshilov, V.* (2014). Vostochnyy vektor gazovoy programmy. Gosudarstvennyy podkhod [Eastern vector of the gas program. The state approach]. *Gazprom: Korporativnyy zhurnal* [Gazprom Corporate Magazine], 10. Available at: <http://www.gazprom.ru/press/reports/2014/eastern-vector> (date of access: 20.10.2014).

Information about the authors

Plyaskina, Nina Ilyinichna (Novosibirsk, Russia) – Doctor of Sciences (Economics), Leading Researcher at the Institute of Economics and Industrial Engineering, Siberian Branch of the Russian Academy of Sciences (17, Ac. Lavrentiev av., Novosibirsk, 630090, Russia, e-mail: plyaskina@hotmail.com); Professor at Novosibirsk National Research State University (2, Pirogov st., Novosibirsk, 630090, Russia).

Kharitonova, Viktoriya Nikitichna (Novosibirsk, Russia) – Candidate of Sciences (Economics), Assistant Professor, Leading Researcher at the Institute of Economics and Industrial Engineering, Siberian Branch of the Russian Academy of Sciences (17, Ac. Lavrentiev av., Novosibirsk, 630090, Russia, e-mail: kharit@ieie.nsc.ru).

Vizhina, Irina Aleksandrovna (Novosibirsk, Russia) – Senior Researcher at the Institute of Economics and Industrial Engineering, Siberian Branch of the Russian Academy of Sciences (17, Ac. Lavrentiev av., Novosibirsk, 630090, Russia, e-mail: vira@ieie.nsc.ru).

27.06.2016 .

©, 2016

332(38)656

: , 2016, 3 (91), . 162–177

• •

:

.

,

,

,

.

()

-

.

-

.

.

-

.

-

-

-

,

—

.

:

,

-

,

,

-

,

,

5,8%

.

,

,

.

-

,

，

，

.

.

.

，

，

.

，

.

.

50%

，

.

，

() [7],

，

(. 1).

(.- .);

(),

-

-

.

，

.

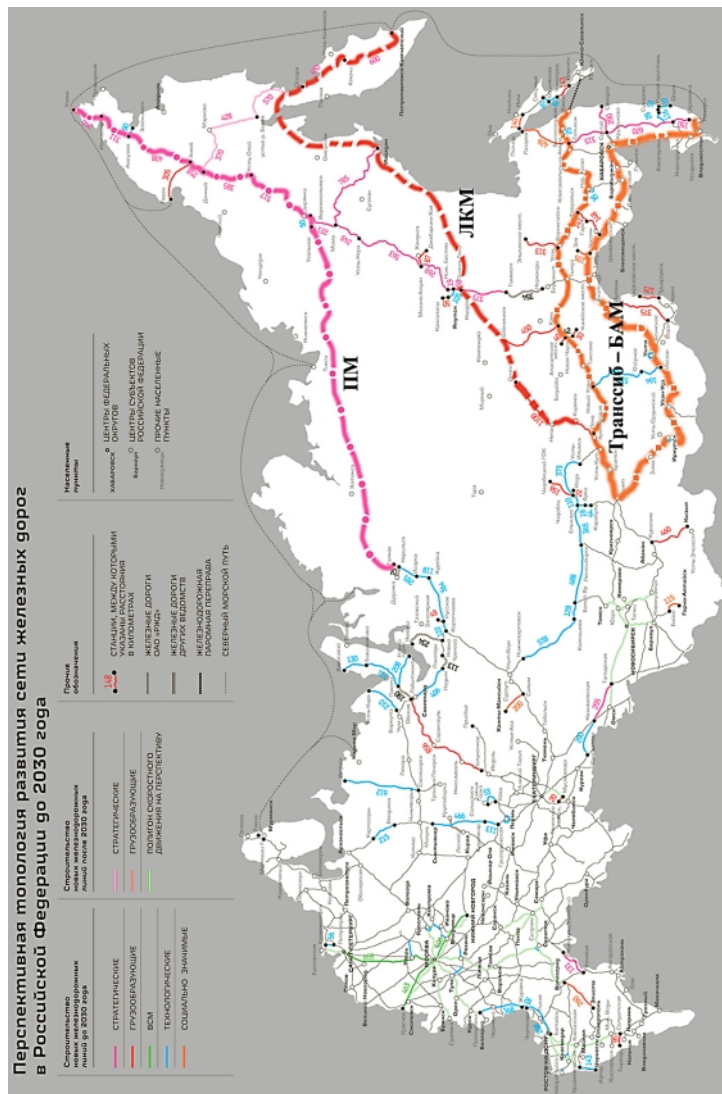
，

，

.

(-) [9]

Перспективная топология развития сети железных дорог в Российской Федерации до 2030 года



1.

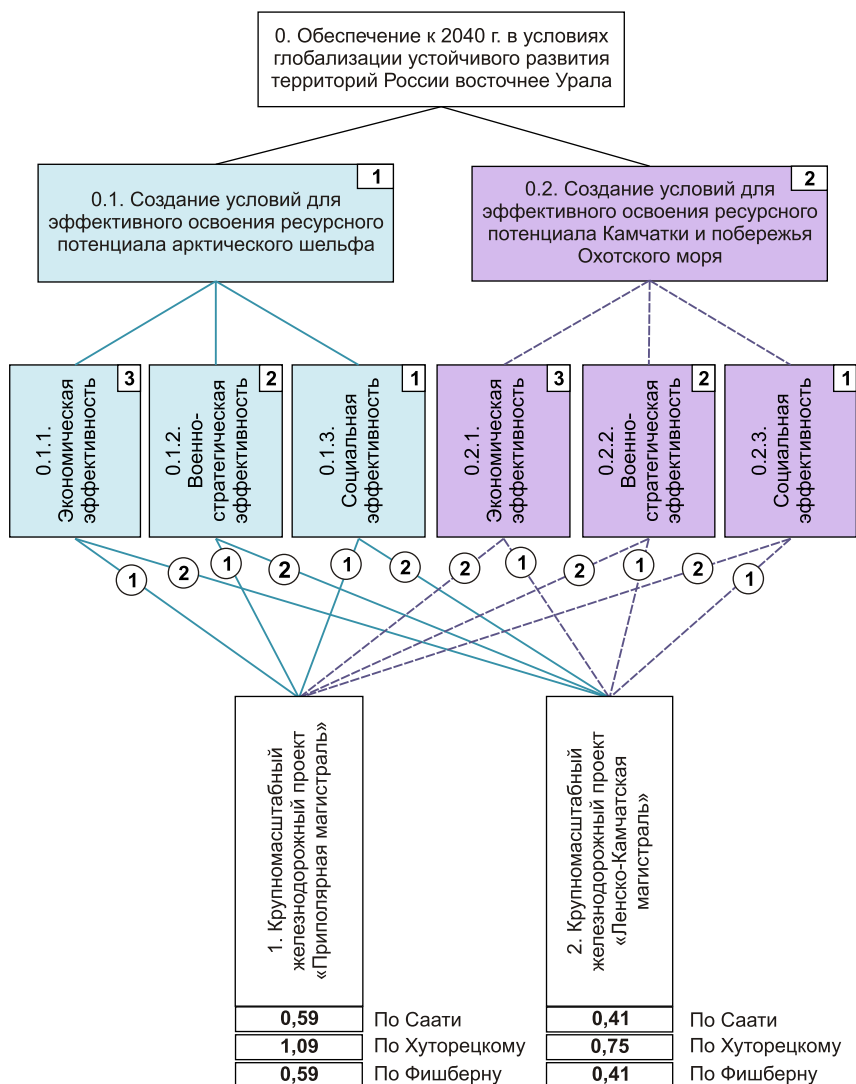
2030. »

(URL: <http://rzd.ru/dbmm/images/1/121/59756>)

1
.:
?ID=707751 .

– URL: <http://www.gudok.ru/newspaper/>

| 1. 2019 年 12 月 31 日 | | |
|---------------------|------------|--|
| 资产 | 负债和所有者权益 | |
| 流动资产 | 流动负债 | |
| 货币资金 | 短期借款 | |
| 应收账款 | 应付账款 | |
| 预付款项 | 预收款项 | |
| 其他应收款 | 应付职工薪酬 | |
| 存货 | 应交税费 | |
| 流动资产合计 | 流动负债合计 | |
| 非流动资产 | 非流动负债 | |
| 长期股权投资 | 长期借款 | |
| 固定资产 | 应付债券 | |
| 无形资产 | 其他非流动负债 | |
| 非流动资产合计 | 非流动负债合计 | |
| 资产总计 | 负债和所有者权益总计 | |
| | 所有者权益 | |
| | 实收资本 | |
| | 资本公积 | |
| | 盈余公积 | |
| | 未分配利润 | |
| | 所有者权益合计 | |



. 2.

« »

-

,

-

« ».

« »

(. . 2).

[4]

,

—

.

—

,

(²,

[1; 8], ³).

.

—

,

.

(. . 2).

,

.

ORDEX,

[8],

,

(),

,

,

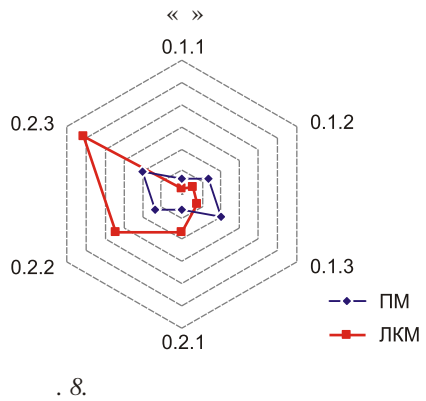
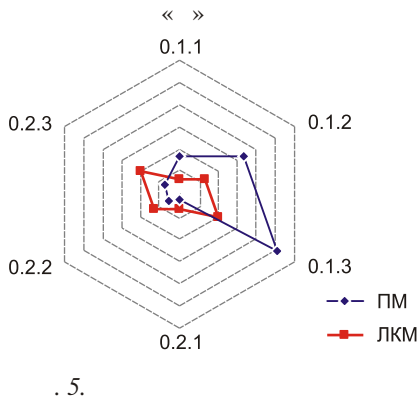
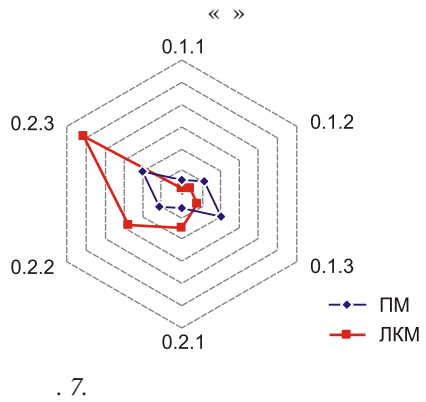
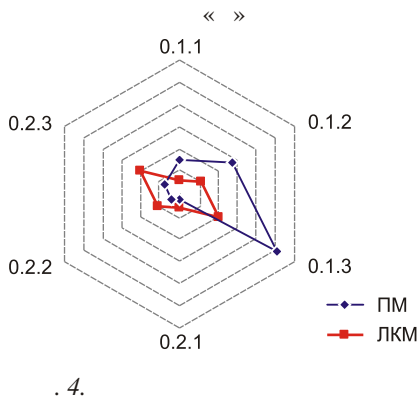
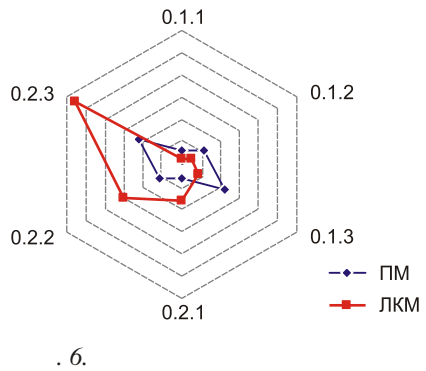
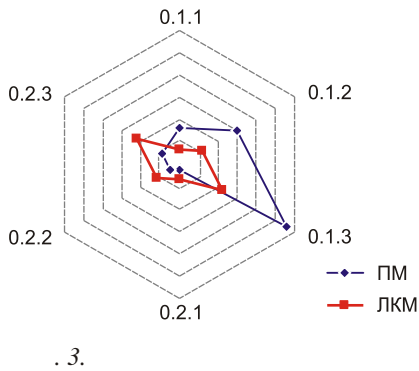
,

.

² .: . — URL: www.gorskiy.ru/articles/dmss/ahp.html ; www.gorskiy.ru/articles/dmss/ahp.html .

³ .: . — URL: <http://www.vmgroupp.ru/publications/public6.htm> .

170



« » :

$$; f(x_i y_j + \dots + x_n y_n) = (0,71 \ 0,11 + 0,71 \ 0,21 +$$

$$+ 0,71 \ 0,39 + 0,29 \ 0,05 + 0,29 \ 0,08 + 0,29 \ 0,16) = 0,59.$$

$$; f(x_i y_j + \dots + x_n y_n) = (0,29 \ 0,11 + 0,29 \ 0,21 +$$

$$+ 0,29 \ 0,39 + 0,71 \ 0,05 + 0,71 \ 0,08 + 0,71 \ 0,16 = 0,41.$$

, , -
 .- . « », 0,59,
 .- . « -
 ». , « » -
 .
 « » :

$$; f(x_i y_j + \dots + x_n y_n) = (0,71 \ 0,21 + 0,71 \ 0,39 +$$

$$+ 0,71 \ 0,71 + 0,29 \ 0,08 + 0,29 \ 0,16 + 0,29 \ 0,29) = 1,09.$$

$$; f(x_i y_j + \dots + x_n y_n) = (0,29 \ 0,21 + 0,29 \ 0,39 +$$

$$+ 0,29 \ 0,71 + 0,71 \ 0,08 + 0,71 \ 0,16 + 0,71 \ 0,29 = 0,75.$$

$$1,09 > 0,75,$$
 « » -
 -
 , « - ».
 « » :

$$; f(x_i y_j + \dots + x_n y_n) = (0,71 \ 0,12 + 0,71 \ 0,24 +$$

$$+ 0,71 \ 0,36 + 0,29 \ 0,05 + 0,29 \ 0,10 + 0,29 \ 0,14) = 0,59.$$

$$; f(x_i y_j + \dots + x_n y_n) = (0,29 \ 0,12 + 0,29 \ 0,24 +$$

$$+ 0,29 \ 0,36 + 0,71 \ 0,05 + 0,71 \ 0,10 + 0,71 \ 0,14) = 0,41.$$

, ,
 .
 « » : .- . «
 » ,
 .
 « » .
 « » :

$$; f(x_i y_j + \dots + x_n y_n) = (0,71 \ 0,05 + 0,71 \ 0,08 +$$

$$+ 0,71 \ 0,16 + 0,29 \ 0,11 + 0,29 \ 0,21 + 0,29 \ 0,39) = 0,41.$$

:

$$; f(x_i y_j + \dots + x_n y_n) = (0,29 \cdot 0,05 + 0,29 \cdot 0,08 + 0,29 \cdot 0,16 + 0,71 \cdot 0,11 + 0,71 \cdot 0,21 + 0,71 \cdot 0,39) = 0,59.$$

$$, 0,41 < 0,59,$$

.- . « - ».

« » :

$$; f(x_i y_j + \dots + x_n y_n) = (0,71 \cdot 0,08 + 0,71 \cdot 0,16 + 0,71 \cdot 0,29 + 0,29 \cdot 0,21 + 0,29 \cdot 0,39 + 0,29 \cdot 0,71) = 0,75.$$

$$; f(x_i y_j + \dots + x_n y_n) = (0,29 \cdot 0,08 + 0,29 \cdot 0,16 + 0,29 \cdot 0,29 + 0,71 \cdot 0,21 + 0,71 \cdot 0,39 + 0,71 \cdot 0,71) = 1,09.$$

-

$$, 0,75 < 1,09.$$

« » :

$$; f(x_i y_j + \dots + x_n y_n) = (0,71 \cdot 0,05 + 0,71 \cdot 0,10 + 0,71 \cdot 0,14 + 0,29 \cdot 0,12 + 0,29 \cdot 0,24 + 0,29 \cdot 0,36) = 0,41.$$

$$; f(x_i y_j + \dots + x_n y_n) = (0,29 \cdot 0,05 + 0,29 \cdot 0,10 + 0,29 \cdot 0,14 + 0,71 \cdot 0,12 + 0,71 \cdot 0,24 + 0,71 \cdot 0,36) = 0,59.$$

« » -

, « - -

».

(. 1) (. . -

.- . , , ,

I

| | « » | « » | « » | $\min_j u_{ij}$ | $\max_j u_{ij}$ |
|-----------------|------|------|------|-----------------|-----------------|
| | 0,59 | 0,53 | 0,41 | 0,41 | 0,59 |
| | 0,41 | 0,47 | 0,59 | 0,41 | 0,59 |
| $\max_i u_{ij}$ | 0,59 | 0,53 | 0,59 | | |

| | | |
|--|---|---|
| | | |
| | | |
| | * | * |
| | * | * |
| | * | * |
| | * | |

).

. 1, « »

« » « », « - -

» — « » , -

-

.

:

-

, , , .

. 2, -

.

,

« » « - -

» . -

.

,

,

,

-

,

-

,

.

- , -

1. // -
-
/
.
. - : - , 2014. -
. 294–361.
2. XXI . – URL: <http://lebed.com/2014/art6393.htm> (
18.03.2016).
3. -
// . – 2009. – 2. – . 34–35.
4. // : . – 2015. –
1 (85). – . 3–19.
5. : //
: . – 2014. – 4 (84). – . 55–72.
6. /
. : - , 2015. – 160
7. : -
/ - : - , 2003. – 80 .
8. - - . -
- , 1994. – 15 . (130).
9. : -
// : . – 2008. – 3. –
. 200–206.

(,) – .
(630049, -
, 191, e-mail: wanderer-di.di@yandex.ru).

DOI: 10.15372/REG20160309

Region: Economics & Sociology, 2016, No. 3 (91), p. 162–177

D.D. Shibikin

LARGE-SCALE INVESTMENT PROJECTS: THE PROBLEM OF CHOICE UNDER UNCERTAINTY

The article describes the method of choice for a preferred implementation of large-scale investment project among other alternatives under radical uncertainty. Since projects of this scale are usually rather complex, the selection procedure begins with target structuring. A target system (objective tree) is quantified by using expert techniques. Similarly, the next phase involves building a hierarchy of scenarios describing the development of the economy within the completing projects' life cycles. These two steps result in a strategic evaluation matrix. After analyzing it, according to the decision theory, a researcher is able to select the preferred large-scale investment project. The method has been tested in the evaluation of the following competing projects: Lena–Kamchatka Mainline, Transpolar Mainline, and the reconstruction of the Trans-Siberian and Baikal–Amur Mainline routes.

Keywords: large-scale investment projects; uncertainty; commercial success; strategic effectiveness; structuring; choice

References

1. Bespalov, I.A., K.P. Glushchenko, Ye.B. Kibalov, A.B. Khutoretskiy; V.V. Kuleshov & N.I. Suslov (Eds.). (2014). Otsenka ozhidaemoy effektivnosti krupnomasshtabnykh investitsionnykh proektov [Assesment of expected efficiency of large-scale investment projects]. Sistemnoe modelirovanie i analiz mezo- i mikroekonomicheskikh obyek-

tov [System Modeling and Analysis of Meso- and Microeconomic Objects]. Novosibirsk, IEIE SB RAS Publ., 294–361.

2. *Binkin, B.A., S.A. Bykadorov & Ye.B. Kibalov.* (2014). Rossiya kak konfigurator mirovogo rynka transportnykh uslug v XXI veke [Russia as a configurator of a world railway system in the XXI century]. Available at: <http://lebed.com/2014/art6393.htm> (date of access: 18.03.2016).

3. *Dudnikov, Ye.Ye. & V.V. Cosmin.* (2009). Lensko-Kamchatskaya zheleznodorozhnaya magistral [Lena–Kamchatka Mainline]. Transport Rossiyskoy Federatsii [Transport of the Russian Federation], 2, 34–35.

4. *Kibalov, Ye.B. & A.B. Khutoretskiy.* (2015). Alternativy transportnogo obespecheniya osvoeniya arkticheskogo shelfa Rossii [Alternatives to transport support in exploration of Russia's Arctic shelf]. Region: ekonomika i sotsiologiya [Region: Economics and Sociology], 1 (85), 3–19.

5. *Kin, A.A.* (2014). Regionalno-transportnyy megaproekt BAM: uroki osvoeniya [The Baikal-Amur regional and transport megaproject: lessons from exploitation]. Region: ekonomika i sotsiologiya [Region: Economics and Sociology], 4 (84), 55–72.

6. *Kibalov, Ye.B., I.A. Bespalov, V.F. Buzulutskov et al.* (2015). Kompleksnyy podkhod k otsenke obshchestvennoy effektivnosti krupnomasshtabnykh zheleznodorozhnykh projektov [An Integrated Approach to Efficiency Evaluation of Large-scale Railway Projects]. Novosibirsk, STU Publ., 160.

7. *Komarov, K.L.* (Ed.). (2003). Kontseptsiya razvitiya transportnogo kompleksa RF: severo-vostochnyy vektor [The development concept for the transport complex of the Russian Federation: the northeastern vector]. Novosibirsk, STU Publ., 80.

8. *Khutoretskiy, A.B.* (1994). Ekspertnoe otsenivanie ob'yektov po nekvantifitsirovannomu kriteriyu s pomoshchyu modeli Berzha – Bruka – Burkova [Expert evaluation of objects through the non-quantified criterion by using Berge – Brooke – Burkov Model]. Preprint No. 130. Novosibirsk, IEIE SB RAS Publ., 15.

9. *Shipilina, A.I.* (2008). Pripolyarnaya zheleznodorozhnaya magistral: analiz vnutrennikh i vneshnikh effektiv [Circumpolar Trunk Railway: analysis of internal and external effects]. Region: ekonomika i sotsiologiya [Region: Economics and Sociology], 3, 200–206.

Information about the author

Shibikin, Dmitriy Dmitrievich (Novosibirsk, Russia) – post-graduate student at Siberian Transport University (191, Dusya Kovalchuk st., Novosibirsk, 630049, Russia, e-mail: wanderer-di.di@yandex.ru).

16.05.2016 .

© . ., 2016

332.1

: , 2016, 3 (91), . 178–194

• •

-

• -

, -

, -

• -

, -

•

•

, -

, , ,

-

-

-

•

, ,

, • •

,

-

• ,

, -

•

180



. 1.

1990-

| | | | | |
|---|-----|------|----|----|
| | ; | , | . | - |
| | | | | - |
| | . | | | |
| | [2] | | | - |
| | | | : | |
| • | | | | - |
| | - | | | - |
| | | | | ; |
| • | | | | - |
| | - | | | - |
| | | | | ; |
| • | - | | | ; |
| • | | | , | - |
| | | | | - |
| | - | | , | |
| | | | ; | |
| • | | | | - |
| | , | | | - |
| | | | , | |
| | (| | : | - |
| | | 1 | | |
| | | 1000 | |); |
| • | | | | , |
| | | | | ; |
| • | | | | |
| | 100 | . | .) | (|
| • | | | | , |
| | | | | - |
| | , | | | ; |
| • | | | | (|
| |) | | | ; |
| • | | | | - |
| | | | | ; |
| • | | | | ; |

186

3) , -
;

4) ,
: 1 -
;

5) .
: 1-6-
- 5 ; 7-12- - 4 ; 13-18- - 3 ;
19-24- - 2 ; 25- - 1 ;

6) :
,
-
:
-3 ; -0 ; -5 ;

7)

8) ;
.

9) -5 , -0 ;
(, -
) : , - -
,
,
:
-0 ; -
-1 ;
- 2 ; -
3 .

25 : 10 - ; 11 -
- ; 26 -
.



. 2.

2014 .

, , -
, , .
- 2014 . 2013 .
, 2014 .
, , ,
, , ,
- 2013 .
30 627 .
, (, -

| - | | | 2014 . | 2013 . | |
|---|---|--|--------|--------|--|
| - | | | - | | |
| . | 6 | | | 17 | |
| . | 1 | | | 3 | |
| . | 7 | | | 2 | |
| . | - | | | 2 | |
| . | 1 | | | 4 | |
| . | 1 | | . | 8 | |
| . | - | | . | 4 | |
| | 3 | | . | 1 | |
| . | 3 | | . | 6 | |
| . | 8 | | | - | |
| . | 3 | | . | - | |
| . | 5 | | . | 1 | |
| . | 3 | | | 5 | |
| . | 3 | | - | 1 | |
| . | 2 | | . | 2 | |
| | 6 | | | | |

), (, , -

) (, -

) . -

.

- -

2014 .

-

.

-

-

,

,

- -

,

-

.

,

-

.

.

-

,

-

(

, ,). ,

,

-

-

,

.

- ,

. - ,

.

-

-

.3.

,

,

-



. 3.

1.

//

. – 2012. – 1 (11). – С. 70–80.

2. ... -
... , 2009. – 366 .
3. ... -
... , 2003. – 296 .
4. ... -
... , 2004. – 316 .
5. ... -
... , 2000. – 162 .
6. ... / ... , 2004. – 512 .
7. ... -
... , 2005. – 400 .

(,) – -
,
(610019,
, 69, e-mail: nadlarionova@mail.ru).

DOI: 10.15372/REG20160310

Region: Economics & Sociology, 2016, No. 3 (91), p. 178–194

N.A. Larionova

METHODOLOGY FOR ASSESSING THE INTERREGIONAL COOPERATION OF A RUSSIAN FEDERAL SUBJECT

The article presents a methodology for assessing the development level of interregional cooperation of a particular region within the borders of one country, which aims at optimizing the management decision-making process. We propose a new assessment system that allows evaluating not only the state of interregional cooperation but also the prospects for development of relations between regions. Considering the example of the Kirov Oblast regional executive authorities, we conclude that should these authorities use the research results, it will qualitatively improve the state regulation of interregional cooperation.

Keywords: Kirov Oblast; interregional cooperation; assessment; state regulation; forms of interaction

References

1. *Bazhenov, Yu.N. & O.V. Podshuvejt.* (2012). Problemy i vozmozhnosti razvitiya vneshneekonomicheskoy deyatel'nosti Sankt-Peterburga, Leningradskoy oblasti i Respubliki Kareliya [Foreign economic activity of Saint Petersburg, the Leningrad Region, and the Republic of Karelia: Problems and opportunities for development]. *Mezhdunarodnye otnosheniya* [International Relations], 1 (11), 70–80.
2. *Burak, P.I., V.G. Rostanets & A.V. Topilin.* (2009). Infrastruktura mezhregionalnogo ekonomicheskogo sotrudnichestva i imperativy innovatsionnogo razvitiya [Infrastructure of Interregional Economic Cooperation and the Imperatives of Innovative Development]. Moscow, *Ekonomika Publ.*, 366.
3. *Klimanov, V.V.* (2003). Regionalnye sistemy i regionalnoe razvitie v Rossii [Regional Systems and Regional Development in Russia]. Moscow, Editorial URSS Publ., 296.
4. *Kolodina, Ye.A.* (2004). Regulirovanie mezhregionalnoy ekonomicheskoy integratsii v Rossii. Dissertatsiya na soiskanie uchenoy stepeni doktora ekonomicheskikh nauk [Regulation of interregional economic integration in Russia. Author's abstract, thesis for the degree of Doctor of Economics]. Irkutsk, 316.
5. *Kuligin, V.A.* (2000). Mezhhregionalnaya ekonomicheskaya integratsiya v perekhodnoy ekonomike. Dissertatsiya na soiskanie uchenoy stepeni kandidata ekonomicheskikh nauk [Interregional economic integration in transition economy. Author's abstract, thesis for the degree of Candidate of Economics]. Oryol, 162.
6. *Morozova, T.G.* (Ed.), *M.P. Pobedina, G.B. Polyak et al.* (2004). Regionalnaya ekonomika [Regional Economy]. Moscow, *Unity-Dana Publ.*, 512.
7. *Shapkin, I.N., A.O. Blinov & Ya.M. Kester.* (2005). Upravlenie regionalnym khozyaystvom [Management of Regional Economy]. Moscow, *KNORUS Publ.*, 400.

Information about the author

Larionova, Nadezhda Aleksandrovna (Kirov, Russia) – Deputy Chief of the department at the Ministry of Business and Trade Development and External Relations of Kirov Oblast Administration (69, Karl Liebknecht st., Kirov, 610019, Russia, e-mail: nadlarionova@mail.ru).

21.03.2016 .

© . ., 2016

196

| | | |
|-----------|-----|---|
| - | - | |
| | , | - |
| | | ? |
| | , | - |
| | . | |
| | , , | - |
| , | - | - |
| | , | - |
| | | - |
| | . | |
| - | , | |
| | . | |
| | - | |
| | - | |
| | - | |
| | , | |
| | , | - |
| (, . .), | | - |
| | , | |
| | . | - |
| | | - |
| . | | |
| : | | - |
| - | | |
| - | . | - |
| | , | - |
| . | | |

| | | | |
|----|----|-----|----|
| | - | - | |
| | , | | |
| | , | · · | |
| | | | - |
| | | | . |
| 1. | | | |
| | | , | - |
| | | . | - |
| | - | , | |
| | - | | |
| 2. | - | | - |
| | | , | - |
| | | | |
| 3. | | | |
| | , | | - |
| | . | | |
| | | | - |
| | | | - |
| | « | | ». |
| | | | - |
| | | | - |
| | 34 | . | - |
| | | , | - |
| | | - | - |
| | , | , | - |
| | , | | - |
| | | | - |
| | . | | - |
| | | « | » |
| 18 | . | | |

| | | | |
|---|---|---|---|
| | - | - | |
| | | | - |
| | | , | - |
| | | | - |
| , | | . | |
| | - | , | |
| | | | - |
| | | . | |
| | - | | |
| | - | | |
| | | | - |
| | | , | - |
| ? | | | - |
| | , | | : |
| • | | , | - |
| | , | | - |
| | | , | - |
| | | ; | |
| • | | , | - |
| | , | | - |
| | | ; | - |
| • | | , | - |
| | | , | - |
| | . | | - |
| | | . | |
| | - | | , |
| | | | - |

$$\begin{aligned}
& k, y_k = 0 \quad ; u_k = 1, \\
& k, u_k = 0 \quad . \\
& . \\
& : \\
& \sum_{t=1}^T \sum_{i=1}^{NP} (DBP_i^t + ZPP_i^t - EPP_i^t) z_i + \sum_{j=1}^{NI} (VDI_j^t + ZPI_j^t - EPI_j^t - ZI_j^t) x_j + \\
& + \sum_{k=1}^{NE} (ZPE_k^t - ZE_k^t) y_k + \sum_{k=1}^{NE} ZPE_k^t u_k / (1 + DG)^t \quad \max \quad (1)
\end{aligned}$$

$$\sum_{j=1}^{NI} ZI_j^t x_j + \sum_{k=1}^{NE} ZE_k^t y_k \leq BudG^t, t = 1, \dots, T; \quad (2)$$

$$x_j \in \{0,1\}, i = 1, \dots, NP, j = 1, \dots, NI; \quad (3)$$

$$y_k + u_k \in \{0,1\}, i = 1, \dots, NP, k = 1, \dots, NE; \quad (4)$$

$$y_k + u_k \in \{0,1\}, k = 1, \dots, NE; \quad (5)$$

$$i_k (y_k + u_k) \in \{0,1\}, i = 1, \dots, NP, k = 1, \dots, NE; \quad (6)$$

$$\sum_{t=1}^T \sum_{i=1}^{NP} CFP_i^t z_i - \sum_{k=1}^{NE} ZE_k^t u_k / (1 + DI)^t \leq 0; \quad (7)$$

$$\sum_{k=1}^{NE} ZE_k^t u_k - \sum_{i=1}^{NP} CFP_i^t z_i \leq BudI^t, t = 1, \dots, T; \quad (8)$$

$$\sum_{t=1}^T \sum_{i=1}^{NP} (ZPP_i^t - EPP_i^t) z_i + \sum_{j=1}^{NI} (ZPI_j^t - EPI_j^t) x_j + \\
+ \sum_{k=1}^{NE} ZPE_k^t (y_k + u_k) / (1 + DG)^t \leq 0; \quad (9)$$

$$x_j, y_k, z_i, u_k \in \{0,1\}, i = 1, \dots, NP, j = 1, \dots, NI, k = 1, \dots, NE. \quad (10)$$

,

(2) (8)

(3)–(4)

,

(5))

(6)).

(7))

(9),

CFP_i^t , DBP_i^t .

$\{x_y, y_k, z_i, u_k\}$,

(1)–(10)

[4].

EPP_i^t EPI_j^t ,

CFP_i^t , DBP_i^t

VDI_j^t .

,

.

,

,

[9; 11].

,

,

(Cash Flow)

CFP_i^t DBP_i^t

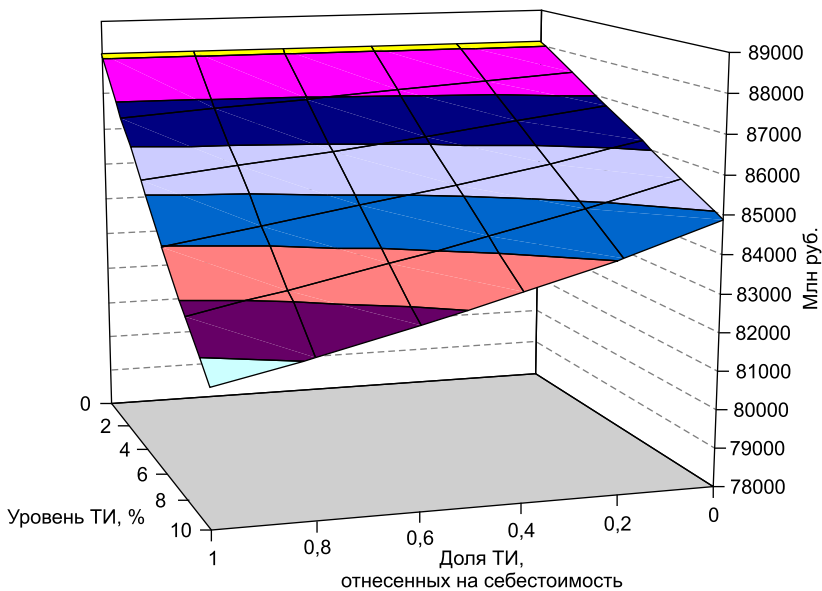
,

,

[14],

VDI_j^t

[5]



. 1.

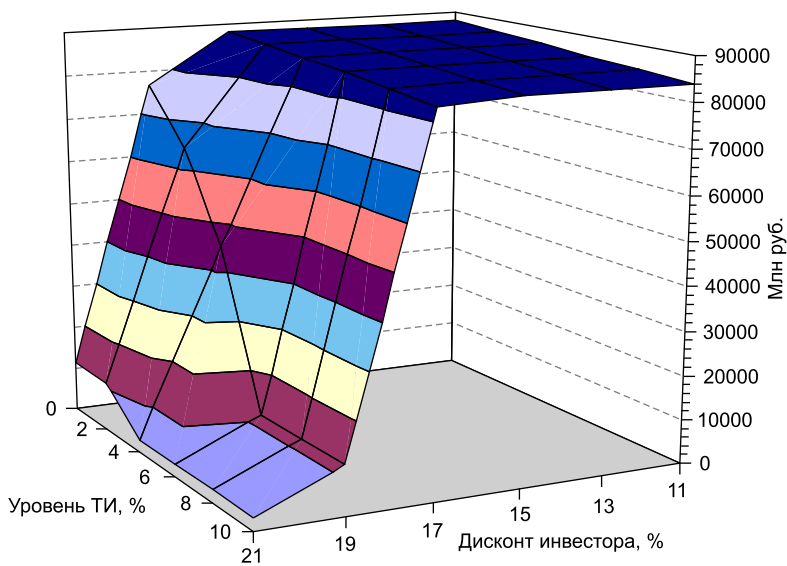
1 2 -
($ELL < 0,05$, $ECL < 0,05$).

10%-

NPV

4-10%

. 2 (
25%).



. 2.

17%, 6

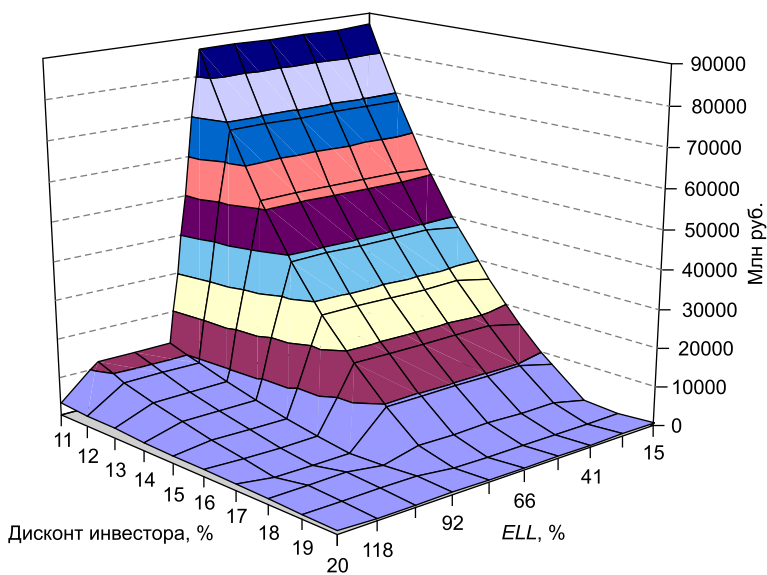
NPV

2%

(1)–(10)

$(ECL < 0,05)$, ?

« »



. 3.

($ECL < 0,05$)

NPV

80% (. 3) -

-

-

-

19% 80%.

($ELL < 0,05$), ?

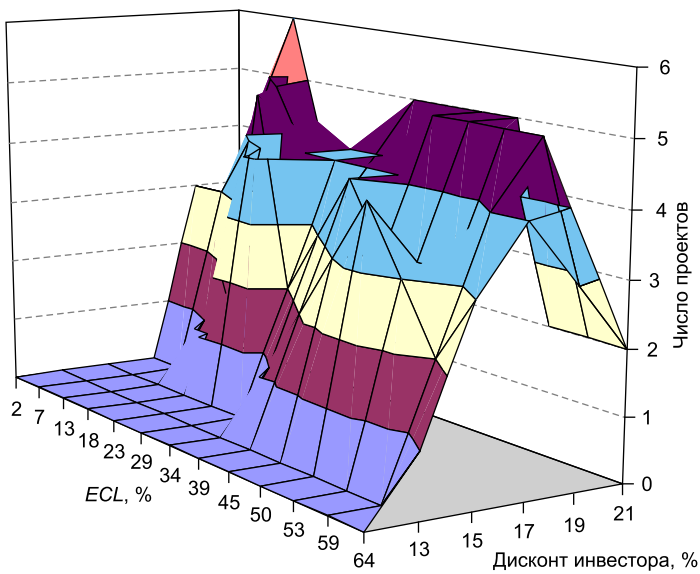
-

-

-

NPV

-



. 4.

$$(ELL < 0,05)$$

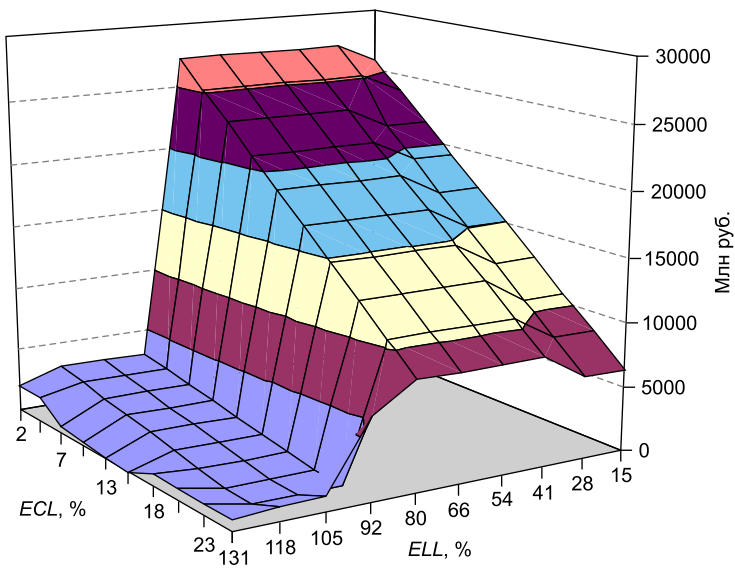
« » (. 4),
« » , NPV.

?

$$(ELL < 80\%)$$

$$(\text{ . 5}),$$

,



. 5.

« » , -

NPV .

- ,

, -

, -

, -

. , -

(16-18-00073)

1. . . . -
.- 2011. - 9. - . 155-166.
2. . . . -
// . - 2014. - 12. -
. 129-137.
3. . . .
// : . - 2009. - 2. -
. 3-22.
4. . . -
: ,
.- 2010. - 1. - . 99-110.
5. . . -
.- : - , 2008.
6. . .
// . -
2014. - 3. - . 44-66.

7. . . . : -
/ . . . - : -
, 2015. – 352 .
8. -
: / . . . , . . . - :
- , 2014. – 527 .
9. . . . -
.: , 2009. – 331 .
10. -
/ – : , 2013. – 319 c.
11. . . : -
// . – 2015. -
3 (118). – . 179–191.
12. . . , . . . -
//
. – 2015. – 12 (127). – . 19–38.
13. *Challen R.* Institutions, Transaction Costs and Environmental Policy: Institutional Reform for Water Resource. – Aldershot, UK: Edward Elgar Publ., 2000. – 233 p.
14. *Glazyrina I.P., Kalgina I.S., Lavlinskii S.M.* Problems in the development of the mineral and raw-material base of Russia's Far East and prospects for the modernization of the region's economy in the framework of Russian–Chinese cooperation // *Regional Research of Russia*. – 2013. – Vol. 3, No. 4. – . 405–413.
15. *Marshall G.R.* Transaction costs, collective action and adaptation in managing socio-economic system // *Ecological Economics*. – 2013. – Vol. 88. – P. 185–194.
16. *McCann L., Colby ., Easter K.W. et al.* Transaction cost measurement for evaluating environmental policies // *Ecological Economics*. – 2005. – Vol. 52, Is. 4. – P. 527–542.
17. *Ostrom E.* A behavioral approach to the rational choice theory of collective action: Presidential Address, American Political Science Association, 1997 // *American Political Science Review*. – 1998. – Vol. 92, No. 1. – P. 1–22.
18. *Ostrom E.* A general framework for analyzing sustainability of social-ecological systems // *Science*. – 2009. – Vol. 325, Is. 5939. – P. 419–422.
19. *Williamson O.E.* Transaction cost economics: how it works; where it is headed // *De Economist*. – 1998. – Vol. 146, No. 1. – P. 23–58.

(,) – -
,
(672014, , , 16 ,
-mail: iglazyrina@bk.ru).

(,) –
(630090, , , 4, -mail:
lavlin@math.nsc.ru).

DOI: 10.15372/REG20160311

Region: Economics & Sociology, 2016, No. 3 (91), p. 195–218

I.P. Glazyrina, S.M. Lavlinskii

ECO-ECONOMIC MODELS IN THE MINERAL RESOURCE SECTOR OF RUSSIA

The paper considers the institution of public-private partnership (PPP) as well as its development level in the Russian mineral resource sector and investigates partnership arrangements as an effective government tool for assisting investors at the expense of the Investment Fund both in building the infrastructure and carrying out environmental measures in underdeveloped areas. In order to examine the properties of partnership, we designed special economic and mathematical tools that help effectively divide the costs required in mineral resource base development between the state and private investors. These tools are a combination of integer mathematical programming problem and a set of predictive models used to describe resource area operation processes. We demonstrate the technique in practice through the example of Transbaikal (Zabaykalskiy Kray), to which end we elaborate a development plan for a group of polymetallic deposits with the PPP mechanism and analyze the sensitivity of solutions to changes in its key parameters. The results of our numerical studies confirm that the mechanism is applicable to underdeveloped areas. They also suggest that, besides a well-thought-out approach to determining the scope of aid essential for infrastructure and environmental projects, it makes much sense to account for transaction costs since their level and structure affect the performance of both private investors and the state.

Keywords: partnership arrangements; integer mathematical programming problem; mineral resource base development plan; Zabaykalskiy Kray

*The publication is prepared within the framework of the project
No. 16-18-00073 supported by funding from the Russian Science Foundation*

References

1. Zabelina, I.A. & Ye.A. Klevakina. (2011). Ekologo-ekonomicheskie aspekty prirodopolzovaniya i problemy prigranichnogo sotrudnichestva v regionakh Sibiri [Ecological and economic aspects of natural use and problems of international co-operation in Siberian regions]. EKO, 9, 155–166.
2. Korsun, O.V. & I.Ye. Mikheyev. (2014). Sotsialno-ekonomicheskoe znachenie sozdaniya novykh osobo okhranyaemykh prirodnykh territoriy v rossiysko-kitayskom prigranichye [Creation of new natural protected areas as a factor of ensuring the effectiveness of socioeconomic system in the Russian–Chinese border]. Vestnik Zabaykalskogo gosudarstvennogo universiteta [Transbaikalian State University Journal], 12, 129–137.
3. Kuleshov, V.V., V.I. Suslov & V.Ye. Seliverstov. (2009). Strategicheskie usloviya dolgosronogo razvitiya Sibiri [Strategic aims of the long-term development in Siberia]. Region: ekonomika i sotsiologiya [Region: Economics and Sociology], 2, 3–22.
4. Lavlinskii, S.M. (2010). Gosudarstvenno-chastnoe partnerstvo na syryevoy territorii: ekologicheskie problemy, modeli i perspektivy [Public–private partnership in a natural resource region: ecological problems, models, and prospects]. Problemy prognozirovaniya [Studies on Russian Economic Development], 1, 99–110.
5. Lavlinskii, S.M. (2008). Modeli indikativnogo planirovaniya sotsialno-ekonomicheskogo razvitiya resursnogo regiona [Socioeconomic Development of a Raw-Material Territory: Indicative Planning Models]. SB RAS Publ.
6. Malkina, M.Yu. (2014). Dinamika i faktory vnutriregionalnoy i mezhregionalnoy differentsiatsii dokhodov naseleniya RF [Dynamics and determinants of intra- and inter-regional income differentiation of the population of the Russian Federation]. Prostranstvennaya ekonomika [Spatial Economics], 3, 44–66.
7. Kuleshov, V.V. (Ed.). (2015). Mineralno-syryevoy sektor Aziatskoy Rossii: kak obespechit sotsialno-ekonomicheskuyu otdachu [Natural resource sector in the Asian part of Russia: how to ensure socioeconomic returns]. Novosibirsk, IEIE SB RAS Publ. 352.
8. Glazyrina, I.P. & L.M. Faleychik (Eds.). (2014). Prirodnyy kapital regiona i rossiysko-kitayskie transgranichnye otnosheniya: perspektivy i riski [Natural capital of the Region and Russian–Chinese Cross-Border Relations: Opportunities and Risks]. Chita, Transbaikalian State University Publ., 527.
9. Ryumina, Ye.V. (2009). Ekonomicheskiy ushcherb ot ekologicheskikh pravonarusheniy [Economic Analysis of Damage from Environmental Violations]. Moscow, Nauka Publ., 331.
10. Korsun, O.V. (Ed.). (2013). Sovremennye problemy ekologicheskoy bezopasnosti transgranichnykh regionov [Current Problems of Environmental Security in Cross-border Regions]. Novosibirsk, Nauka Publ., 319.

-
11. *Titova, G.D.* (2015). Otsenka ekosistemnykh uslug: potentsial primeneniya na praktike [Ecosystem services valuation: a potential application in practice]. *Vestnik Zabaykalskogo gosudarstvennogo universiteta* [Transbaikal State University Journal], 3 (118), 179–191.
 12. *Faleyshik, L.M., O.K. Kirilyuk & N.V. Pomazkova.* (2015). GIS-modelirovanie dlya geokologicheskoy otsenki riskov narusheniya ustoychivosti landshtov [GIS modeling for environmental risk assessment of landscapes stability violation]. *Vestnik Zabaykalskogo gosudarstvennogo universiteta* [Transbaikal State University Journal], 12 (127), 19–38.
 13. *Challen, R.* (2000). *Institutions, Transaction Costs and Environmental Policy: Institutional Reform for Water Resource.* Aldershot, UK, Edward Elgar Publ., 233.
 14. *Glazyrina, I.P., I.S. Kalgina & S.M. Lavlinskii.* (2013). Problems in the development of the mineral and raw-material base of Russia's Far East and prospects for the modernization of the region's economy in the framework of Russian–Chinese cooperation. *Regional Research of Russia*, Vol. 3, Is. 4, 405–413.
 15. *Marshall, G.R.* (2013). Transaction costs, collective action and adaptation in managing socio-economic system. *Ecological Economics*, 88, 185–194.
 16. *McCann, L., B. Colby, K.W. Easter et al.* (2005). Transaction cost measurement for evaluating environmental policies. *Ecological Economics*, Vol. 52, Is. 4, 527–542.
 17. *Ostrom, E.* (1998). A behavioral approach to the rational choice theory of collective action: Presidential Address, American Political Science Association, 1997. *American Political Science Review*, Vol. 92, No. 1, 1–22.
 18. *Ostrom, E.* (2009). A general framework for analyzing sustainability of social-ecological systems. *Science*, Vol. 325, Is. 5939, 419–422.
 19. *Williamson, O.E.* (1998). Transaction cost economics: how it works; where it is headed. *The Economist*, Vol. 146, No. 1, 23–58.

Information about the authors

Glazyrina, Irina Petrovna (Chita, Russia) – Doctor of Sciences (Economics), Head of Laboratory at the Institute of Natural Resources, Ecology and Cryology, Siberian Branch of the Russian Academy of Sciences (16a, Nedorezov st., Chita, 672014, Russia, -mail: iglazyrina@bk.ru).

Lavlinskii, Sergey Mikhaylovich (Novosibirsk, Russia) – Doctor of Sciences (Engineering), Leading Researcher at the Institute of Mathematics, Siberian Branch of the Russian Academy of Sciences (4, Ac. Koptuyg av., Novosibirsk, 630090, Russia, -mail: lavlin@math.nsc.ru).

16.06.2016 .

© , 2016

: 336.14:352

: , 2016, 3 (91), . 219–237

• •

2006–2014 .

[1; 3; 5].

-, 2014 .

| | | - | - | | |
|-----|-------|------|-------|-------|-------|
| | 11137 | 4564 | 8537 | 24237 | 25110 |
| | 5864 | 2458 | 7762 | 16084 | 16471 |
| | 5559 | 2998 | 7690 | 16247 | 17013 |
| - - | 11940 | 2321 | 12002 | 26263 | 27046 |
| * | 5702 | 4419 | 11243 | 21364 | 21599 |
| * | 8492 | 3187 | 6893 | 18573 | 20024 |
| | 11542 | 2280 | 9295 | 23118 | 23429 |
| | 7382 | 4019 | 7445 | 18846 | 19939 |
| | 9419 | 2490 | 8137 | 20047 | 20376 |
| | 8103 | 4930 | 9098 | 22131 | 23182 |
| | 6677 | 3399 | 15445 | 25521 | 25843 |
| | 10286 | 3893 | 12635 | 26814 | 27787 |
| | 4298 | 3240 | 8893 | 16431 | 16998 |
| | 7939 | 3303 | 9712 | 20953 | 21642 |

* 2013 .

1, , - , - , - , - , -

—

—

•

—

—

—

—

—

—

—

—

—

—

—

—

—

—

—

—

—

•

| | | |
|---|-------------|--|
| | | |
| $\begin{matrix} - \\ - \end{matrix}$ (\quad) | $= \quad /$ | $\begin{matrix} - \\ - \end{matrix}$; $\begin{matrix} - \\ - \end{matrix}$ (\quad) ; |
| $\begin{matrix} - \\ - \end{matrix}$ $(\quad)^*$ | $= \quad /$ | $\begin{matrix} - \\ - \end{matrix}$; $\begin{matrix} - \\ - \end{matrix}$ |
| $\begin{matrix} - \\ - \end{matrix}$ $(\quad)^*$ | $= \quad /$ | $\begin{matrix} - \\ - \end{matrix}$; $\begin{matrix} - \\ - \end{matrix}$; |
| $(\quad)^*$ | $= \quad /$ | $\begin{matrix} - \\ - \end{matrix}$. $< 0, \quad = 0$ |
| $\begin{matrix} - \\ - \end{matrix}$ (\quad) | $= \quad /$ | |

* , ,) . II : - (, -) .

. 2

| , % | | | | | | | | | |
|-----|-------|-------|-------|-------|-------|-------|-------|-------|-------|
| | 2006 | 2007 | 2008 | 2009 | 2010 | 2011 | 2012 | 2013 | 2014 |
| , | 36,67 | 35,34 | 36,99 | 40,54 | 37,92 | 35,26 | 42,21 | 42,02 | 45,95 |
| : | 19,48 | 19,10 | 23,45 | 25,83 | 24,53 | 23,47 | 30,14 | 30,90 | 33,99 |
| - | 5,15 | 3,45 | 3,75 | 4,06 | 3,93 | 3,60 | 3,77 | 3,28 | 3,39 |
| | 12,04 | 12,80 | 9,80 | 10,65 | 9,47 | 8,19 | 8,29 | 7,83 | 8,35 |
| , | 33,46 | 26,02 | 31,49 | 24,02 | 25,02 | 25,84 | 18,80 | 17,81 | 18,83 |
| : | | | | | | | | | |
| - | 0,83 | 0,64 | 0,66 | 0,85 | 2,08 | 1,69 | 0,56 | 0,56 | 0,72 |
| - | 15,02 | 12,03 | 13,25 | 11,39 | 9,59 | 8,39 | 9,23 | 8,64 | 10,72 |
| | 10,64 | 8,89 | 10,23 | 5,16 | 7,49 | 7,65 | 5,50 | 4,91 | 4,31 |

2014 . - (. 4). ,
-
.
- ,
- 2006–2014 .
-
- , . .
- , .

| , % (2014 ./ 2006–2014 .) | | | | | | | | |
|---------------------------|-------|-------|-----|-------|-------|-----|-------|-----|
| | | | | | | | | |
| | | | | | | | | |
| - - * ** | 36/48 | 23/32 | 5/6 | 8/10 | 15/21 | 1/1 | 6/9 | 7/4 |
| | 34/45 | 14/32 | 4/5 | 16/9 | 18/20 | 1/1 | 12/12 | 3/5 |
| | 45/44 | 20/22 | 8/8 | 14/12 | 9/14 | 1/1 | 5/8 | 1/2 |
| | 27/31 | 19/24 | 5/5 | 2/2 | 21/35 | 1/1 | 11/13 | 7/4 |
| | 46/43 | 24/24 | 7/7 | 15/13 | 17/14 | 1/1 | 9/6 | 4/3 |
| | 50/54 | 29/31 | 2/3 | 19/20 | 10/14 | 1/1 | 4/7 | 3/4 |
| | 39/41 | 28/27 | 4/4 | 7/8 | 21/20 | 1/1 | 12/11 | 5/4 |
| | 47/59 | 33/43 | 3/4 | 11/12 | 12/15 | 1/1 | 9/9 | 2/2 |
| | 37/43 | 23/30 | 4/5 | 9/9 | 22/20 | 1/1 | 12/13 | 7/3 |
| | 26/36 | 15/21 | 2/4 | 9/10 | 13/11 | 1/1 | 10/7 | 1/2 |
| | 38/39 | 24/24 | 4/3 | 4/4 | 15/12 | 1/1 | 7/6 | 6/5 |
| | 26/32 | 20/25 | 5/6 | 1/1 | 20/32 | 1/1 | 9/8 | 2/7 |
| | 38/43 | 23/28 | 4/5 | 10/9 | 16/19 | 1/1 | 9/9 | 4/4 |
| | 46/39 | 34/26 | 3/4 | 8/10 | 19/25 | 1/1 | 11/11 | 4/7 |

* 2006–2013 .
** 2007–2013 .

| | , % | | | | | | | | |
|---|-------|-------|-------|-------|-------|-------|-------|-------|-------|
| | 2006 | 2007 | 2008 | 2009 | 2010 | 2011 | 2012 | 2013 | 2014 |
| | 70,13 | 61,36 | 68,48 | 64,55 | 62,93 | 61,10 | 61,01 | 59,82 | 64,78 |
| , | 25,01 | 35,25 | 31,52 | 35,45 | 37,07 | 38,90 | 38,99 | 40,18 | 35,22 |
| : | 3,09 | — | — | — | — | — | — | — | — |
| | 1,33 | 9,07 | 14,02 | 10,31 | 13,51 | 14,09 | 15,92 | 22,42 | 7,05 |
| | 19,16 | 25,84 | 16,72 | 24,54 | 23,32 | 22,77 | 21,54 | 17,39 | 25,27 |
| | — | — | 0,69 | 0,53 | 0,19 | 2,37 | 1,61 | 0,14 | 2,76 |

—
—
() —
(. 5).
2006–2013 . 70 60%. —
(25 40%). —
(53 77% 2006–2014 .),
2014 .
5%,
2014 . —
—
2006 2007 . —
—
—
4,9 3,4% .

| , % | | | | | | |
|------------------------|-------|-------|---------|-------|-------|-------|
| (2014 . / 2006–2014 .) | | | | | | |
| | - | | | | | |
| | | | | - | - | - |
| - - * ** | 52/69 | 48/31 | .../0 | 18/14 | 30/14 | 0/1 |
| | 53/65 | 47/35 | 1/1 | 9/12 | 38/24 | 0/0 |
| | 54/58 | 46/42 | .../0 | 0/16 | 32/24 | 2/1 |
| | 47/66 | 53/34 | 0/0 | 32/20 | 19/16 | 1/1 |
| | 63/57 | 37/43 | 0/0 | 15/24 | 18/14 | 5/5 |
| | 60/67 | 40/30 | 3/1 | 6/9 | 31/18 | 1/3 |
| | 60/61 | 40/39 | 0/0 | 12/24 | 27/18 | 0/1 |
| | 59/73 | 41/27 | 0/0 | 14/10 | 27/14 | .../1 |
| | 59/63 | 41/37 | .../... | 12/16 | 27/20 | 2/1 |
| | 39/47 | 61/53 | 1/5 | 17/20 | 43/28 | 0/1 |
| | 53/52 | 47/46 | 0/0 | 8/14 | 39/31 | 0/0 |
| | 46/63 | 54/34 | 1/... | 24/14 | 29/20 | 0/0 |
| | 54/62 | 46/38 | 1/1 | 14/16 | 30/20 | 1/1 |
| | 65/64 | 35/35 | .../... | 7/14 | 25/22 | 3/1 |
| | | | | | | |

*

**

2006–2013 .
2007–2013 .

6. -
2014 . -
, ,
2006–2014 ., , -

| | , % | | | | | | | | |
|---|-------|-------|-------|-------|-------|-------|-------|-------|-------|
| | 2006 | 2007 | 2008 | 2009 | 2010 | 2011 | 2012 | 2013 | 2014 |
| | 9,72 | 7,19 | 7,15 | 8,74 | 8,01 | 6,08 | 6,22 | 5,98 | 6,98 |
| | 2,53 | 1,95 | 2,11 | 2,55 | 2,84 | 2,21 | 0,50 | 0,50 | 0,63 |
| | 9,62 | 15,07 | 15,86 | 13,76 | 18,65 | 3,39 | 14,80 | 19,54 | 16,95 |
| - | 21,01 | 19,62 | 18,22 | 12,98 | 13,00 | 27,59 | 12,39 | 14,93 | 10,39 |
| | 0,03 | 0,02 | 0,01 | 0,01 | 0,01 | 0,01 | 0,01 | 0,01 | 0,01 |
| | 34,23 | 30,64 | 35,37 | 37,82 | 35,41 | 35,93 | 45,85 | 49,28 | 52,17 |
| , | 2,37 | 1,94 | 1,90 | 2,19 | 1,83 | 2,21 | 1,71 | 1,77 | 2,12 |
| , | 16,92 | 11,61 | 13,90 | 15,44 | 15,04 | 17,45 | 11,93 | 1,55 | 1,82 |
| | 3,58 | 11,96 | 4,91 | 6,50 | 5,12 | 3,80 | 5,11 | 4,88 | 6,28 |

- -

. ,

.

(. 7)

-
-

- (. 8).
2006 2014 .

9,72 6,98%.

-
-
-
-

3%, 2014 . 0,63%.

(

)
19,54%

9,62

.

| , % | | | | | |
|-----------|-------|--------------|-------|-------|-------|
| (2014 . / | | 2006–2014 .) | | | |
| | - | - | - | - | - |
| | - | | - | | - |
| | 12/14 | 13/7 | 7/21 | 58/41 | 3/2 |
| | 9/11 | 11/10 | 10/16 | 55/41 | 7/8 |
| - - | 6/5 | 13/10 | 17/28 | 35/27 | 20/16 |
| * | 10/8 | 15/9 | 22/21 | 36/33 | 3/3 |
| ** | 10/9 | 17/22 | 17/19 | 46/34 | 1/3 |
| | 9/7 | 14/9 | 10/18 | 50/39 | 8/7 |
| | 6/6 | 22/22 | 8/20 | 53/39 | 2/3 |
| | 8/8 | 17/11 | 17/26 | 45/32 | 7/10 |
| | 7/6 | 11/13 | 7/18 | 26/32 | 1/3 |
| | 3/4 | 8/15 | 2/16 | 51/36 | 16/14 |
| | 7/7 | 13/6 | 11/23 | 44/32 | 19/19 |
| | 7/9 | 13/10 | 18/14 | 50/36 | 3/4 |
| | 8/8 | 14/12 | 12/20 | 46/35 | 8/8 |
| | 7/7 | 17/14 | 10/17 | 52/40 | 6/6 |

*

2006–2013 .

**

2007–2013 .

2011 .,

-

-

-

2006 2011 . -

20%,

20%.

2011 . ,

| | | | |
|-------------|--|-------------------|---|
| | | .. | |
| | | * | |
| | | • | |
| | | , | - |
| | | (. 9). | - |
| 2006–2014 . | | | - |
| | | , | - |
| | | . | - |
| | | , | - |
| | | , | - |
| | | . | - |
| (| |) | - |
| 2006–2014 . | | , | - |
| | | . | - |
| | | , | - |
| 2014 . | | 2006–2013 . | - |
| | | (| - |
| | |) | - |
| | | , | - |
| | | . | - |
| | | . | - |
| | | . | - |
| 2006–2014 . | | . | - |
| | | 0,56 0,74, . . 56 | - |

*

30

| | | I | II | I | II | I | II | |
|------|--------------|---------------|----------------|--------------|---------------|--------------|---------------|----------------|
| 2006 | 0,36 7,06 | 8527 1648 | 12158 10741 | 0,26 0,84 | 0,00 0,01 | 0,74 0,16 | 1,00 0,99 | 11533 10555 |
| 2007 | 0,57 9,19 | 11808 2939 | 19244 19421 | 0,36 0,85 | 0,00 0,004 | 0,64 0,15 | 1,00 0,996 | 18351 18961 |
| 2008 | 0,46 8,51 | 14459 3617 | 21114 21844 | 0,37 0,83 | 0,07 0,02 | 0,63 0,17 | 0,93 0,98 | 22800 22197 |
| 2009 | 0,55 6,92 | 12054 3989 | 18673 22745 | 0,40 0,81 | 0,06 0,01 | 0,61 0,19 | 0,94 0,99 | 19937 22517 |
| 2010 | 0,59 8,40 | 12484 4266 | 19836 31532 | 0,40 0,83 | 0,05 0,01 | 0,60 0,17 | 0,95 0,99 | 20935 31561 |
| 2011 | 0,64 8,68 | 13830 4885 | 22633 34121 | 0,44 0,83 | 0,08 0,01 | 0,56 0,17 | 0,92 0,99 | 24598 34209 |
| 2012 | 0,64 7,79 | 14518 5302 | 23798 37601 | 0,40 0,83 | 0,02 0,003 | 0,60 0,17 | 0,98 0,997 | 24392 36255 |
| 2013 | 0,67 7,87 | 15265 6569 | 25517 45511 | 0,44 0,83 | 0,06 0,01 | 0,56 0,17 | 0,94 0,99 | 29226 45549 |
| 2014 | 0,54 6,91 | 15701 5558 | 24237 34619 | 0,37 0,83 | 0,03 0,02 | 0,63 0,16 | 0,97 0,98 | 25110 35385 |

:

74%

-

-

-

,

(
)

-
4. . – URL: <http://www.lerc.ru/?part=articles&art=7&page=14> (22.09.2015).
 5. // : . – 2013. – 32 (311). – . 3–13.
 6. // . – 2012. – 2. – . 136–140.
- (,) – -
 , . (630090,
 , 17, e-mail: stv@ieie.nsc.ru).

DOI: 10.15372/REG20160312

Region: Economics & Sociology, 2016, No. 3 (91), p. 219–237

T.V. Sumskaya

PROBLEMS OF BUDGET SUFFICIENCY OF NOVOSIBIRSK MEGALOPOLIS

The paper studies key fiscal indicators in cities with a population of over one million people and offers a technique to assess their budget and inter-governmental fiscal flows. With the said technique, the author calculates these indicators over the years 2006–2014 and assesses the structure of municipal budgets (considering both local tax and non-tax revenues and the dependence on regional grants). In addition, we examine the possibility to use budget resources in order to fund the main areas of municipal spending. The megalopolises in the Russian Federation have significantly lost their budgetary independence over the period of analysis. We investigate the stability of the budget for Novosibirsk megalopolis by applying the budgetary coefficients technique and demonstrate where Novosibirsk stands among the megalopolises of Russia and the municipalities of Novosibirsk Oblast.

Keywords: megalopolis; Novosibirsk; budget; budget coefficients; stability of the budget; budget structure assessment techniques

*The publication is prepared within the priority XI.173 (project No. XI.173.1.2)
according to the research plan of the IEIE SB RAS*

References

1. *Bufetova, A.N.* (2013). Struktura urbanizatsii i tendentsii vnutriregionalnoy differentsiatsii urovnya zhizni [Structure of urbanization and trends in intra-regional differentiation of standard of living]. *Vestnik NGU. Seriya: Sotsialno-ekonomicheskie nauki* [Vestnik of Novosibirsk State University. Series: Social and Economic Sciences], Vol. 13, Is. 1, 57–66.
2. *Zubarevich, N.V.* (2010). Goroda na postsotsialisticheskoy prostranstve [Cities in the post-socialist space]. *Obshchestvennye nauki i sovremennost* [Social Studies and the Present], 5, 5–19.
3. *Kolomak, E.A.* (2014). Razvitie gorodskoy sistemy Rossii: tendentsii i faktory [Evolution of Russian urban system: tendencies and determinants]. *Voprosy ekonomiki* [Problems of Economics], 10, 82–96.
4. *Korchagin, Yu.* Byudzhethnaya neobespechennost rossiyskikh gorodov usilivaetsya [Russian cities' fiscal insecurity is going up]. Available at: <http://www.lerc.ru/?part=articles&art=7&page=14> (date of access: 22.09.2015).
5. *Krinichansky, K.V.* (2013). Sovremennyy rossiyskiy gorod v svete tendentsiy urbanisticheskogo mira [Contemporary Russian city in the light of urban world trends]. *Regionalnaya ekonomika: teoriya i praktika* [Regional Economics: Theory and Practice], 32 (311), 3–13.
6. *Chernyakov, M.K.* (2012). Investitsionnaya privilekatelnost Novosibirska: reytingovaya otsenka [Investment appeal of Novosibirsk: rating assessment]. *Sibirskaya finansovaya shkola* [Siberian School of Finance], 2, 136–140.

Information about the author

Sumskaya, Tatiana Vladimirovna (Novosibirsk, Russia) – Candidate of Sciences (Economics), Senior Researcher at the Institute of Economics and Industrial Engineering, Siberian Branch of the Russian Academy of Sciences (17, Ac. Lavrentiev av., Novosibirsk, 630090, Russia, e-mail: stv@ieie.nsc.ru).

25.04.2016 .

© . ., 2016

327.3:339.9

: , 2016, 3 (91), . 238–249

• •

:

, -

, ,

, -

• ,

•

, .

•

: , ,

, ,

,

• , «Oppenheimer Funds»,

, ,

- ,

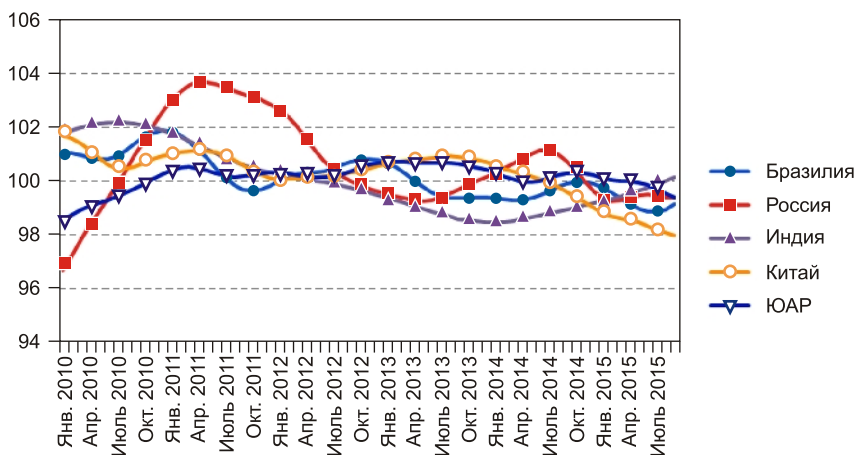
-

[4].

• , ,

, -

, -



1.

«Doing Business Ranking», «World Bank Group», «Transparency International»

99,22 2015 100,12 CLI 98,8 97,94; 99,72 99,01; CLI 99,32, 99,33, 100,09 99,35 (1). 40% 30% 25% 40% 2012 18% 9,4%

230

35 65% 5,3% 11% 17% 36%

2050 12

2015

(.1).

98,48 () 96,47 ().

98,62 98,54, 99,41 99,12.

100,87 101,49 (.2).

external/pubs/ft/weo/2015/01/), [5].

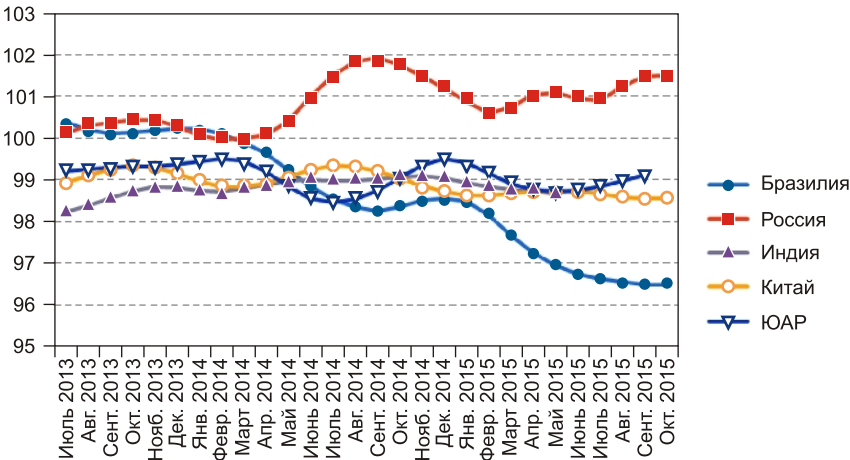
³ Indo-Germany (2013). Editorial, IGCC, Mumbai, No. 2.

2015 .

| | 116 | 4 | 174 | 5 |
|--|-----|---|-----|---|
| | 51 | 1 | 41 | 1 |
| | 130 | 5 | 155 | 4 |
| | 84 | 3 | 136 | 3 |
| | 73 | 2 | 120 | 2 |

: *Doing Business* Ranking, World Bank Group. – URL: <http://www.doingbusiness.org/rankings> .

, « » -



. 2.

[illegible]

⁴ Hindu (2012). Chennai, March 31, p. 13.

furter Allgemeine Zeitung», «Frank-
2.0»: XVII-XX .
5.
2014 .
2014 . 2%, 2016 . 1,5%.
2% .
6 (4,1%),
2016 .
2013 .
50
3
7
ó

⁵ The FAZ (2013). German News Paper, Frankfurt, Germany, March 12.

⁶ 2014 . 4,9%, – 25%
(.: CIA World Factbook. – URL: <http://www.ereport.ru/stat.php?count=G20>).

⁷ 4 .

18 , – 5 9.

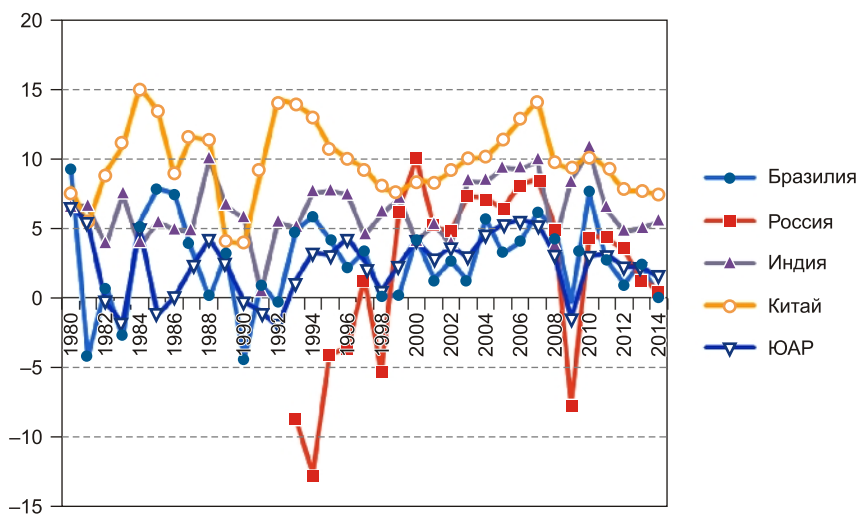
2013 .
G20

2008 .

[2; 3].

2012 2014 .
1,03 0,1%.
– 3,44 0,59%.
4,72% 2012 . 5,4% 2014 .

⁹ Indian Express (Business) (2013). New Delhi, Sept. 6.



. 3.

: 7,65% 2012 ., 7,69% 2013 . 7,39% 2014 .
2,22% 2012 . 1,5%

2014 . (. 3).

1990-

1980-

«Transparency

International» 2014 ., 10

10.

. 2,

¹⁰ Transparency International. (2014). Transparency in Corporate Reporting. – URL: www.transparency.org .

-10

2014 .

| | ACP* | OT** | CBC*** |
|---|------|------|--------|
| «Agricultural Bank of China» () | 15 | 25 | 2 |
| «Banco Bradesco» () | 54 | 31 | 0 |
| «Bank of China» () | 4 | 25 | 1 |
| «Bank of Communications» () | 19 | 19 | 2 |
| «China Construction Bank» () | 15 | 38 | 2 |
| «China Shenhua Energy Company» () | 23 | 38 | 0 |
| «CNOOC Limited» () | 19 | 38 | 0 |
| « » () | 54 | 50 | 0 |
| «Industrial & Commercial Bank of China» () | 23 | 44 | 0 |
| «Itau Unibanco Holding» () | 77 | 38 | 12 |

* (Reporting on Anti-corruption Programmes).
** (Organizational Transparency).
*** (Country by Country Reporting).

1. Anaya, J. (Trad.). (2013). Relaciones internacionales. China-África: un nexo que madura. *La Jornada*, Martes 28 de mayo de 2013, 24.
2. Cooper, A.F. (2013). BRICS in the G-20 Wall. *Indian Express*, Sept. 10.
3. Gordhan, P. (2013). South African Finance Minister. Durban, Sept. 5.
4. Guerrero, F. (2013). Perdieron sentido los BRIC? Entre el concepto económico y el de inversión. *The Wall Street Journal Americas*, May 14.
5. Jalife-Rahme, A. (2013). Tendencias actuales en la geopolítica mundial: el BRICS y la emancipación de Latinoamérica. 4th International Vanguard Science Congress. The Role of Science, Technology and Geo-Politics in the Self-Determination

of Mankind Ciudad de México, Mayo 28–30, Universidad Autónoma Metropolitana Unidad Xochimilco.

6. *Ramone, I.* The World in 2030. – URL: <http://www.monde-diplomatique.es> (- 01.06.2013).

(,) – (202002, , - , e-mail: ba.iqbal.cm@amu.ac.in).

DOI: 10.15372/REG20160313

Region: Economics & Sociology, 2016, No. 3 (91), p. 238–249

B.A. Iqbal

THE BRICS ECONOMIC BLOC: RISKS AND INITIATIVES

BRICS has come up as an economic bloc. But analysts believe that it is China-dominated and hence will serve the cause of Chinese economy rather than the cause of other economies of the bloc. It is also believed that it could be an alternative to the European Union. Thus, the present paper will explore how far this notion is correct. The paper also deals with the creation of the BRICS Development Bank and its role in the promotion of growth and development in the bloc.

Keywords: BRICS; emerging economies; commodity exporters; colonialism

References

See p. 248–249

Information about the author

Iqbal, Badar Alam (Aligarh, India) – Doctor of Economics, Professor at Aligarh Muslim University (Aligarh, UP, 202002, India, e-mail: ba.iqbal.cm@amu.ac.in).

29.02.2016 .

© . ., 2016

1980-2014

• , ,

1978 . ,

-
 .
 ,
 .
 , 9–10 7,5%,
 ,
 [1; 3].
 .
 2016 . 1999 . ,
 . - ,
 . ,
 ,
 . 10
 ,
 ,
 5.
 , ,
 ,
 « , ».
 - ,
 , ,
 . ,
 ,
 [5].
 : , ,
 2013 .

⁵ URL: <http://www.ereport.ru/news/1512301845.htm> .

[illegible]

, 1980–2014 .

| | 1980 | 1990 | 2000 | 2005 | 2007 | 2010 | 2011 | 2012 | 2013 | 2014 |
|-----|-------|-------|-------|-------|-------|-------|-------|-------|-------|-------|
| | 0,522 | 0,590 | 0,669 | 0,699 | 0,710 | 0,726 | 0,728 | 0,730 | 0,744 | 0,755 |
| ... | | 0,730 | 0,713 | 0,753 | 0,770 | 0,782 | 0,784 | 0,788 | 0,778 | 0,798 |
| | 0,345 | 0,410 | 0,463 | 0,507 | 0,525 | 0,547 | 0,551 | 0,554 | 0,586 | 0,609 |
| | 0,407 | 0,495 | 0,590 | 0,637 | 0,662 | 0,689 | 0,695 | 0,699 | 0,719 | 0,727 |
| | 0,570 | 0,621 | 0,622 | 0,604 | 0,609 | 0,621 | 0,625 | 0,629 | 0,658 | 0,666 |

2013 2015 .

90-) (79- 75-)

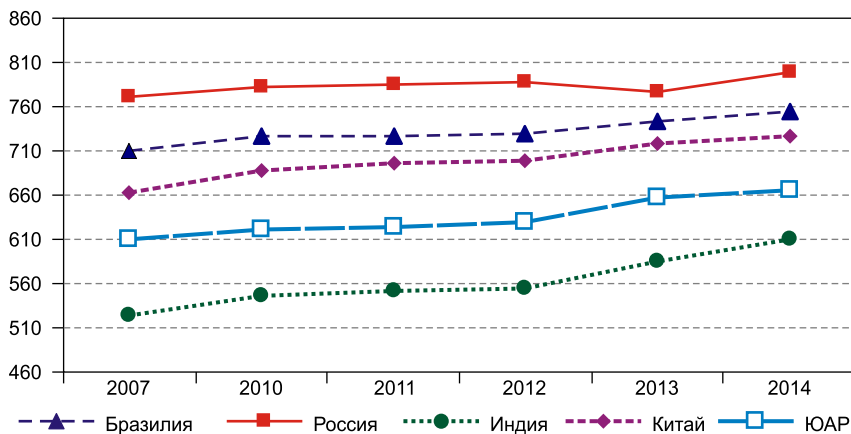
. 2014 .

(. 1).

2013 .

2012 .

[2].



. 1.

2007–2014 .

: [2; 5]

| | -, 2013 | -, 2014 | -, 2014 | -, 2012 | -, 2010 | -, 2011 | -, 2012 |
|--|---------|---------|---------|---------|---------|---------|---------|
| | 0,744 | 0,755 | 202,7 | 73,8 | 7,2 | 14,2 | 10 152 |
| | 0,778 | 0,798 | 142,5 | 69,1 | 11,7 | 14,3 | 14 461 |
| | 0,586 | 0,609 | 1236,3 | 65,8 | 4,4 | 10,7 | 3 285 |
| | 0,719 | 0,727 | 1355,7 | 73,7 | 7,5 | 11,7 | 7 945 |
| | 0,658 | 0,666 | 48,4 | 53,4 | 8,5 | 13,1 | 9 594 |

2014 2015 .

2014 ., (. 2).

7.

⁷ :: *Global Wealth Report*, 2014. – URL: http://economics.uwo.ca/people/davies_docs/credit-suisse-global-wealth-report-2014.pdf .

2013 .

| | | |
|----------------|-------|------|
| | | |
| (> 0,801) | 0,890 | 12,0 |
| (0,700–0,800) | 0,735 | 19,3 |
| (0,541–0, 699) | 0,614 | 25,2 |
| (0,337–0,540) | 0,493 | 32,4 |
| | 0,702 | 22,8 |

2013 .

2013 .

16,2, 3,3

70% 10 1% 8.

44% 2000 .

8 : Global Wealth Report, 2014. – URL: http://economics.uwo.ca/people/davies_docs/credit-suisse-global-wealth-report-2014.pdf .

2008 ., ,
10 . . . 10%
XX .
70%
7 . 2000 .
77,1% , 2007 .
75,4%, 2014 . – 84,8%.
60%
– 50%.
2016 .
10 . 2016 .
12-
(2011–2015 .)
166 . 2010 . 60
2015 .⁹
, 2015 .
10%.
»,
15
(7,3 .) 2014 . 2015 . 5%

⁹ URL: http://gfrt.ru/news/economy/china_is_planning_in_2016_to_reduce_the_number_of_people_in_poverty_by_10_million_people/.

I . 2015 . 23 ., I .
 15,9%, 2,1 . . 2000-
 2014 . 2015 . 2014 . 10%, -
 9,6 7,3% . 2009 . ()
 17 . 5,4% -
 : (-19,3%
 I . 2014 .), (-19,5%), (-15,9%),
 (-11,3%), (-11,3%)¹⁰. , -
 . -
 , . -
 (60%) , -
 . 26% , -
 , 16% , -
 11. , -
 . , -
 -
 2015 . 10,2%. 1990- 12. -
 , -
 , (25 -

10 .: 2015 . - .:
 ;
 ; , 2015. -

URL: https://www.hse.ru/data/2015/06/22/1083888513/2015_3s_Incomes1Q_z.pdf .

¹¹ URL: http://inosmi.ru/country_russia/20160106/234990400.html .

¹² . - 2016. - 17 .

| | (0 – ; 10 –) , 2007–2011 | % « », 2007–2009 | % « », 2007–2011 |
|--|---------------------------------|---------------------|---------------------|
| | 6,7 | 61,9 | 61,3 |
| | 5,9 | 55,2 | 58,0 |
| | 4,9 | 68,7 | 69,2 |
| | 4,5 | 50,0 | 56,5 |
| | 5,3 | 61,0 | 64,2 |

260

14. 2000-
0,58, - 0,55 [4].
30-40%
(
) ,
2014 .
2012 .

14. 2014. – 149.

10%- , .

| | 2000 | 2003 | 2005 | 2007 | 2009 | 2011 | 2013 | 2013/2000, |
|--|-------|-------|-------|--------|--------|--------|--------|------------|
| | 242 | 611 | 1090 | 1957 | 4136 | 4662 | 6183 | 26 |
| | 525 | 1219 | 2100 | 3631 | 5993 | 7097 | 9715 | 19 |
| | 775 | 1775 | 3012 | 5049 | 7869 | 9504 | 12893 | 17 |
| | 1042 | 2327 | 3918 | 6481 | 9873 | 11969 | 16075 | 15 |
| | 1345 | 2993 | 4934 | 8050 | 12028 | 14630 | 19456 | 14 |
| | 1702 | 3745 | 6118 | 9858 | 14490 | 17635 | 23344 | 14 |
| | 2157 | 4767 | 7584 | 12047 | 17513 | 21315 | 28262 | 13 |
| | 2782 | 6128 | 9449 | 15036 | 21663 | 26472 | 35090 | 13 |
| | 3856 | 8241 | 12855 | 20069 | 28673 | 34977 | 45934 | 12 |
| | 8236 | 18359 | 27105 | 43305 | 60631 | 75081 | 97576 | 12 |
| | 2 266 | 5 017 | 7 816 | 12 548 | 18 287 | 22 334 | 29 453 | 13 |

: :2013: . – : ,2013. – .54.

10%-

-
(.5).
-

,

.

,

,

2000 .

(-

) () -

25 , 2005 . 22 ,

2011 . – 7,5 (.6).

« »

10%-

| | 2000 | 2005 | 2006 | 2007 | 2008 | 2009 | 2010 | 2011 |
|--|------|------|------|------|------|------|------|------|
| | 16 | 96 | 104 | 136 | 174 | 208 | 211 | 303 |
| | 22 | 162 | 183 | 272 | 354 | 437 | 426 | 488 |
| | 34 | 226 | 335 | 468 | 541 | 725 | 612 | 688 |
| | 50 | 375 | 643 | 729 | 832 | 981 | 1099 | 921 |
| | 80 | 548 | 684 | 975 | 1222 | 1323 | 1209 | 1178 |
| | 110 | 1078 | 1289 | 1523 | 1622 | 1837 | 1507 | 1612 |
| | 130 | 1118 | 1789 | 2200 | 2501 | 2562 | 2348 | 3553 |
| | 217 | 1520 | 2166 | 2523 | 2902 | 3180 | 3339 | 2527 |
| | 303 | 2069 | 2201 | 2329 | 2484 | 2700 | 3000 | 2632 |
| | 406 | 2109 | 2661 | 2670 | 2950 | 2002 | 2076 | 2259 |

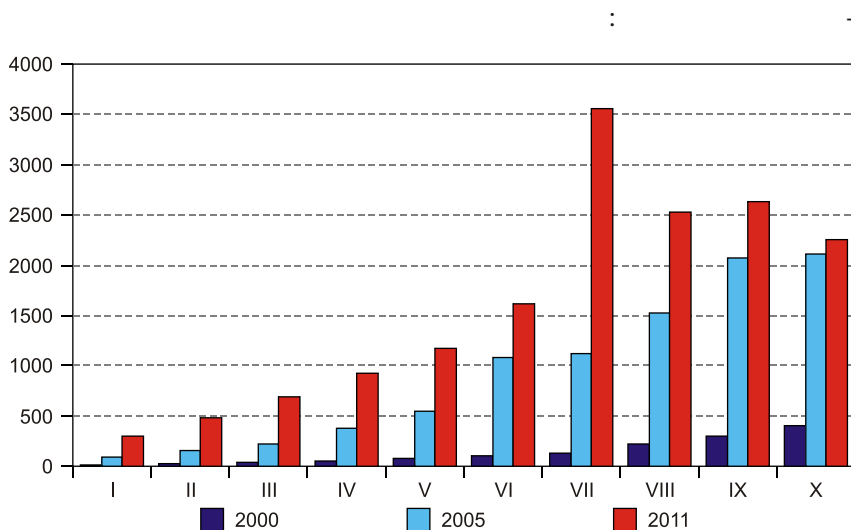
:
: 2013: . - . , 2013. - . 81.

, 10- 11- ,
2014/2015 . . -
(N = 1247)¹⁵,
-

2014 . ,

15
().

(71%)
 9% (ESS, 2008).
 «
 »
 [4].
 (;)
 (. 2).
 XXI .
 2000-



. 2.
 10%-

2000–2011 .,

: 2013: . - ., 2013

* * *

1.

1. URL: <http://echo.msk.ru/blog/aleksashenko/1410700-echo/> (15.01.2016).
2. URL: http://www.glazev.ru/econom_polit/446/ (20.04.2016).
3. , 2015. – 412 .
4. 2014 / , 2014. – 204 .
5. // : . – 2015. – 2 (86). – . 286–303.
6. // . – 2013. – 4. – . 73–77.

(,) – (630090, , 17, e-mail: zima@ieie.nsc.ru).

DOI: 10.15372/REG20160314

Region: Economics & Sociology, 2016, No. 3 (91), p. 250–268

Z.I. Kalugina

HUMAN DEVELOPMENT IN THE BRICS COUNTRIES: SIMILARITIES AND DIFFERENCES

Drawing on the UNDP report, the article examines the trends of human capital development and its national specificities in the BRICS countries for the period of 1980–2014. We introduce rankings for the BRICS countries according to human development indicators and compare the levels of social inequality and human development by country groups and socio-demographic groups of the population. The main indicators characterizing human development in the BRICS member states are the following: life expectancy, the length of upcoming education, and gross national income. The BRICS countries exhibit high and medium levels of human development; at the same time, there is a positive trend in human development. We conclude that the levels of human

development and social inequality are inversely related; the current intense inequality of income distribution seems illegitimate for the majority of Russian citizens. We present an outline of social policy designed to mitigate social inequalities and elaborate promising measures for human capital development in the Russian Federation.

Keywords: BRICS; human development; social inequality; social equity

The publication is prepared within the Complex Program for Basic Research of the Siberian Branch of RAS II.2 /XI.179-2

References

1. Aleksashenko, S. (2014). Chto proiskhodit v Kitae? (What is happening in China?). Available at: <http://echo.msk.ru/blog/aleksashenko/1410700-echo/> (date of access: 15.01.2016).
2. Glazhev, S. (2015). K strategii sotsialnoy spravedlivosti [To the strategy of social equity]. Available at: http://www.glazhev.ru/econom_polit/446/ (date of access: 20.04.2016).
3. Greenspan, A. (2015). Karta i territoriya: Risk, chelovecheskaya priroda i problemy prognozirovaniya; Per. s angl [The Map and the Territory: Risk, Human Nature, and the Future of Forecasting; Transl. from English]. Moscow, Alpina Publ., 412.
4. Grigoriev, L.M. & S.N. Bobylev. (Eds.). (2014). Doklad o chelovecheskom razvitii v Rossiyskoy Federatsii za 2014 god [The 2014 Human Development Report for the Russian Federation]. Moscow, Analytical Center for the Government of the Russian Federation, 204.
5. Iqbal, B.A., Y. Qing & L.A. Bastos. (2015). Gruppa stran BRIKS: znachenie dlya globalnogo mira [BRICS: its implications to global world]. Region: ekonomika i sotsiologiya [Region: Economics and Sociology], 2 (86), 286–303.
6. Sarychev, V.I. (2013). Perspektivy chelovecheskogo razvitiya na polyakh BRIKS: problemy globalnogo upravleniya [Prospects of human development in the BRICS fields: global management problems]. Biznes Inform [Business Inform], 4, 73–77.

Information about the author

Kalugina, Zemfira Ivanovna (Novosibirsk, Russia) – Doctor of Sciences (Sociology), Chief Researcher at the Institute of Economics and Industrial Engineering, Siberian Branch of the Russian Academy of Sciences (17, Ac. Lavrentiev av., Novosibirsk, 630090, Russia, e-mail: zima@ieie.nsc.ru).

16.05.2016 .

© . ., 2016

332.14

: , 2016, 3 (91), . 269–281

• •

2016 .

• -
 , ,
 , -
 , -
 , -
 • • -
 , -
 , -
 , • • -
 , -
 • -
 • -
 , -
 , -
 • -
 • , , , , -
 , ,

1

1

| | | | | |
|---|----------|-------------------|--------------|----------|
| 1 | | 1 | 1 1 1 | |
| | | 1 | | 1 |
| | 1 1 , | 1 1 >> >> 1 | (1 1 1) | 1 1 , |
| | | | 1 1 | 1 1 |
| | | | | 1 |
| | 1 | | () | 1 1 1 |
| | | | | |

:

9

| | | 9 |
|--|--|---|
| | | 9 |
| | | 9 |
| | | 9 |
| | | 9 |
| | | 9 |
| | | 9 |
| | | 9 |
| | | 9 |
| | | 9 |
| | | 9 |
| | | 9 |
| | | 9 |
| | | 9 |
| | | 9 |
| | | 9 |
| | | 9 |
| | | 9 |
| | | 9 |

| | | ، - |
|---|---|-----------------------|
| | - | ، ، |
| | | ، ، |
| | | ، ، |
| | | ، ، |
| | | ، ، |
| | | ، ، ، ، |
| | | ، |
| | | ، |
| | | ، ، ، ، ، ، ، ، |
| | | ، ، ، ، ، ، ، ، ، ، |
| | | ، ، ، ، ، ، ، ، ، ، |
| | | ، ، ، ، ، ، ، ، ، ، |
| ، | | ، ، ، ، ، ، ، ، ، ، |
| | | ، ، ، ، ، ، ، ، ، ، - |
| | | ، ، |
| | | ، ، ، ، ، ، ، ، ، ، - |
| | | ، ، ، ، ، ، ، ، ، ، |
| | | ، ، ، ، ، ، ، ، ، ، |

[8].

.

,

,

-

.

,

,

.

-

,

,

-

.

-

-

,

,

-

-

-

-

-

(

),

,

-

.

-

,

-

,

-

.

,

-

.

,

.

| . . | | |
|------|-------|---|
| | | |
| , | , | - |
| | , | - |
| , | , | - |
| , | , | - |
| | . | - |
| | . | - |
| | | - |
| , | , | - |
| [3]. | , | - |
| | . | |
| | , | - |
| | . | - |
| | | - |
| . | | - |
| | , | - |
| | | - |
| | . | - |
| | , | - |
| | . | - |
| . | | - |
| | . | - |
| | | - |
| , | () , | - |
| | . | - |
| , | | - |
| - | | - |
| | , | - |

1. – 824 .
2.
// – 2008. – 1. –
URL: <http://koet.syktsu.ru/vestnik/2008/2008-1/1/1.htm> (02.02.2016).
3.
– : – ;
– , 2010. – 416 .
4.
// : – 2009. – 3. –
. 19–40.
5. () // –
. – 2005. – 1. – . 4–26.
6. « » . – :
1972. – 767 .
7. :
. – : , 1998. – 432 .
8. « – » //
: 2 . – :
2002. – . 1. – XVI + 668 .; . 2. – VIII + 387 .
9. *Krugman* . Geography and Trade. – London: The MIT Press, 1991. – 142 .

(,) –
 ,
(630090,
 , 17, e-mail: klistorin@mail.ru),
(630090, , 2).

V.I. Klistorin

MODELS OF SPATIAL ANALYSIS AND FORECASTING

In February 2016, an open methodological seminar for undergraduate and graduate students was organized in the Territorial Systems Department at the Institute of Economics and Industrial Engineering SB RAS. The seminar is meant to assist young researchers in thesis writing, expand their knowledge and skills in various fields of economics, teach them techniques of how to use scientific literature, information resources, etc. A critical objective of the seminar is to demonstrate that any economic study and model is based on a certain theory; to explain that, depending on a problem, a researcher should select a theory the most adequate to the task, i.e. based on basic hypotheses and conditions that correlate with the subject and object of their research. Each theory is just a more or less crude approximation to reality and can only be useful when solving specific problems.

One of the first reports delivered at the seminar was devoted to methods of spatial development analysis and forecasting. This article contains its main provisions.

Keywords: space; region; theory; methodology; model; analytics; forecasting of regional development

References

1. Barro, R. & X. Sala-i-Martin. (2010). Ekonomicheskiy rost [Economic Growth]. Moscow, BINOM Knowledge Laboratory Publ., 824.
2. Gadzhiev, Yu.A. (2008). Neoklassicheskie i kumulyativnye teorii regionalnogo ekonomicheskogo rosta i razvitiya [Neoclassical and cumulative theories of regional economic growth and development]. Vestnik nauchno-issledovatel'skogo tsentra korporativnogo prava, upravleniya i venchurnogo investirovaniya Syktyvkarskogo gos.

un-ta [Bulletin of Research Center of Corporate Law, Management and Venture Investment of Syktyvkar State University], 1. Available at: <http://koet.syktsu.ru/vestnik/2008/2008-1/1/1.htm> (date of access: 02.02.2016).

3. *Dubina, I.N.* (2010). *Matematiko-statisticheskie metody v empiricheskikh sotsialno-ekonomicheskikh issledovaniyakh: Ucheb. Posobie* [Mathematical and Statistical Methods for Social and Economic Research. Textbook]. Moscow, Finansy i statistika Publ.; INFRA-M Publ., 416.

4. *Leksin, V.N.* (2009). *K metodologii issledovaniya i regulirovaniya protsessov territorialnogo razvitiya* [Towards methodology of the research and regulation of spatial development]. Region: ekonomika i sotsiologiya [Region: Economics and Sociology], 3, 19–40.

5. *Minakir, P.A.* (2005). *Ekonomika i prostranstvo (tezisy razmyshleniy)* [Economy and space (rethinking theses)]. *Prostranstvennaya ekonomika* [Spatial Economics], 1, 4–26.

6. *Myrdal, G.* (1972). *Sovremennye problemy «tretyego mira»* [Asian Drama: An Inquiry into the Poverty of Nations (summary translation)]. Moscow, Progress Publ., 767.

7. *Olson, M.* (1998). *Vozvyshenie i upadok narodov. Ekonomicheskiy rost, stagflyatsiya i sotsialnyy skleroz* [The Rise and Decline of Nations: Economic Growth, Stagflation, and Social Rigidities]. Novosibirsk, EKOR Publ., 432.

8. *Tower, E.* (2002). *Analiz «izderzhek – vygod» i otsenivanie proektov* [Cost–benefit analysis and project appraisal]. *Panorama ekonomicheskoy mysli kontsa XX stoletiya (v 2 tomakh)* [Companion to Contemporary Economic Thought]. St. Petersburg, Ekonomicheskaya shkola Publ., XVI + 668, VIII + 337.

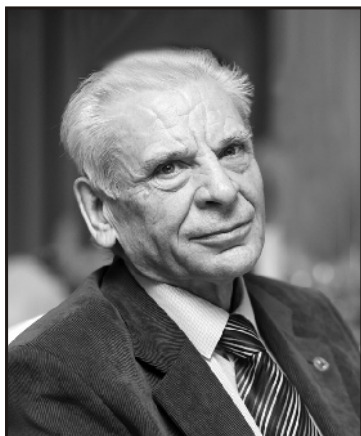
9. *Krugman, P.* (1991). *Geography and Trade*. London, The MIT Press, 142.

Information about the author

Klistorin, Vladimir Ilyich (Novosibirsk, Russia) – Doctor of Sciences (Economics), Leading Researcher at the Institute of Economics and Industrial Engineering, Siberian Branch of the Russian Academy of Sciences (17, Ac. Lavrentiev av., Novosibirsk, 630090, Russia, e-mail: klistorin@ieie.nsc.ru); Professor at Novosibirsk National Research State University (2, Pirogova st., Novosibirsk, 630090, Russia).

18.07.2016 .

© . ., 2016



• •

5 2016 . 71- -

« : -

» -

• • •

, -

, -

1100 , -

100 , -

, -

• -

• •

, -

, -

, -

, -

« » « -

», 15 -

, -

• -

• -

« : -

»

• • , , •



« : »

2015 .

, , .

:

<http://elibrary.ru/issues.asp?id=7623> ,

<http://sibran.ru/journals> .

, ,

<http://recis.ru/> ,

<http://sibran.ru/> ,

<http://elibrary.ru/issues.asp?id=7623>

<http://ecsocman.hse.ru/region> .

«Ulrich's Periodicals Directory».

:

630090, .

, . , 17,

E-mail: region@ieie.nsc.ru

« » ,

« - » , « - » .

.

<http://sibran.ru/journals> .

..

..

..

..

..

17.06.1993 . 0110809.

15 2016 . 60×84 1/16.

. Times New Roman. . 17,75.

.- . 17,0. 53.

630090,

,

.

.

, 17 ,

The journal was first issued in 1963. It was published under the title of Bulletin of Siberian Branch of AS USSR: Social Sciences. In 1993, it was registered as an independent scientific publication, Region: Economics and Sociology. The journal is issued on a quarterly basis.

Publisher: Federal State Budgetary Scientific Institution
Institute of Economics and Industrial
Engineering (IEIE), Siberian Branch of the
Russian Academy of Sciences (SB RAS)

Founders: SB RAS,
IEIE SB RAS,
Executive Office of the Interregional
Association «Siberian Accord»

Editor-in-Chief

V.Ye. Seliverstov, Doctor of Economics, e-mail: sel@ieie.nsc.ru

Deputy Editors-in-Chief

T.Yu. Bogomolova, Candidate of Sociology, e-mail: bogtan@rambler.ru

A.A. Kin, Candidate of Economics, e-mail: region@ieie.nsc.ru

V.I. Suslov, Corresponding Member of the RAS, e-mail: suslov@ieie.nsc.ru

Executive Editor

Ye.S. Unzhakova, e-mail: yes@ieie.nsc.ru

Members of Editorial Board

J. Bachtler, Professor (UK), *N.D. Vavilina*, Doctor of Sociology (Russia), *V.M. Heyets*, Member of the National Academy of Sciences (Ukraine), *B.S. Zhi-kharevich*, Doctor of Economics (Russia), *V.I. Ivankov*, Candidate of Philosophy (Russia), *S.V. Kazantsev*, Doctor of Economics (Russia), *Z.I. Kalugina*, Doctor of Sociology (Russia), *E.A. Kolomak*, Doctor of Economics (Russia), *N.A. Kravchenko*, Doctor of Economics (Russia), *V.V. Kuleshov*, Member of the RAS (Russia), *O.D. Kutsenko*, Doctor of Sociology (Ukraine), *V.N. Leksin*, Doctor of Economics (Russia), *P.A. Minakir*, Member of the RAS (Russia), *N.N. Mikheeva*, Doctor of Economics (Russia), *A.S. Novoselov*, Doctor of Economics (Russia), *I. Pálné-Kovács*, Corresponding Member of the Hungarian Academy of Sciences (Hungary), *A.N. Pelyasov*, Doctor of Geography (Russia), *B.N. Porfiriev*, Corresponding Member of the RAS (Russia), *B.G. Saneev*, Doctor of Engineering (Russia), *S.V. Soboleva*, Doctor of Economics (Russia), *S.A. Suspitsyn*, Doctor of Economics (Russia), *S. Tabata*, Professor (Japan), *A.I. Tatarkin*, Member of the RAS (Russia), *G. White*, Professor (Canada), *G.A. Untura*, Doctor of Economics (Russia)

Publisher's address: 17, Ac. Lavrentiev av., Novosibirsk, 630090, Russia
E-mail: region@ieie.nsc.ru, yes@ieie.nsc.ru

В следующем номере журнала будут опубликованы статьи:

- Стратегическое планирование в Российской Федерации: есть ли свет в конце тоннеля
- Методические проблемы формирования информационной базы динамической межотраслевой модели
- Экстерриториальное и локальное в развитии ресурсных регионов
- Комплексная оценка экономической безопасности региона ресурсного типа
- Реиндустриализация экономики сельских территорий Новосибирской области
- Роль арктического дискурса в формировании идентичности жителей северного региона
- Пространственная мобильность как фактор экономической мобильности
- Межпоколенная социальная мобильность в России: регионально-поселенческий аспект
- Этносоциальные особенности адаптации населения Тывы к рыночной экономике
- Диверсификация как стратегия экономического роста региона: за и против
- Конкурентные позиции региона в условиях инновационного развития экономики
- Влияние мегапроектов ВСТО и «Сила Сибири» на экономику и природную среду Якутии
- Комплексность переработки сырья как фактор повышения эколого-экономической эффективности наилучших доступных технологий
- Реалии сельского самоуправления: реформы и их последствия
- Планирование устойчивого функционирования предприятия в условиях нестабильности внешней и внутренней среды

УВАЖАЕМЫЕ ЧИТАТЕЛИ!

С правилами для авторов и требованиями к оформлению статей можно ознакомиться на официальном сайте журнала «Регион: экономика и социология» (<http://recis.ru>).

Полнотекстовая версия журнала в Интернете публикуется на сайтах: Научной электронной библиотеки <http://elibrary.ru/issues.asp?id=7623> , Издательства СО РАН <http://sibran.ru/journals> .

Условия подписки на бумажную версию журнала или полнотекстовую сетевую версию в Интернете публикуются на сайте <http://sibran.ru/journals> .

Подписку на журнал также можно оформить во всех почтовых отделениях России, стран СНГ и Балтии по Каталогам газет и журналов агентств «Пресса России» и «Урал-Пресс» (индексы 43708).

Журнал издается ежеквартально на английском языке с названием «Regional Research of Russia» и включает переводы статей по региональной экономике, социологии и другим направлениям региональных исследований. Журнал включен в Международную базу данных «Scopus». Для подписки на журнал «RRR» следует обращаться в издательство Springer (www.springer.com, e-mail: journals-ny@springer.com).

Журнал включен в Перечень 2015 г. ведущих рецензируемых периодических научных изданий, в которых ВАК рекомендует публикации работ, отражающих основное научное содержание кандидатских и докторских диссертаций.